

Door Parts

Hinged Door Soft Closer

Patent

45kg
OK

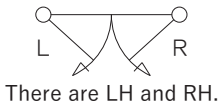
This door closer is suitable for indoor use, either on a new or an existing door. It helps to reduce the unpleasant noise of the door hitting the frame and prevent it from slamming shut. The door closer will decelerate the speed of the door at ±40 mm towards the end and automatically pull the door to close perfectly. The installation can be done easily using the attached pattern paper. Once installed, the closing speed can be adjusted. Compared to the other products, ours has outstanding durability as it has passed 500,000 times during the performance test.

Adjustable range: Up- down ±5 mm, right- left ±5 mm,
front- back ±4 mm
Material: <Main unit/ Spool bracket>Resin, Steel
<Liner>Steel

| Hinged Door Soft Closer | | | |
|-------------------------|--------|-------------|-----------------|
| Product No. | | | |
| LH | RH | Door Weight | Finish/Color |
| 312021 | 312025 | 10~30kg | Gold Painting |
| 312022 | 312026 | (98~294N) | Silver Painting |
| 312023 | 312027 | ※1 | Gray |
| 312024 | 312028 | | Brown |
| 312051 | 312055 | 45kg | Gold Painting |
| 312052 | 312056 | (441N) | Silver Painting |
| 312053 | 312057 | ※2 | Gray |
| 312054 | 312058 | | Brown |

Screw included:
<Bracket>
4×30 Binding head tapping screw 2pcs
<Main unit>
4×30 Pan head tapping screw 2pcs
4×20 Flat head tapping screw 3pcs
M4×12 Pan head machine screw 2pcs
M4 Flat washer 2pcs

※1 Recommended door weight:10~25kg
※2 Recommended door weight:26~40kg



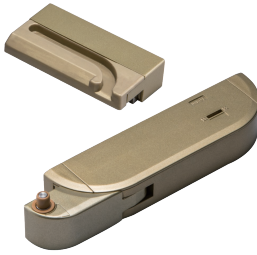
There are LH and RH.



Gray (R)



Brown (R)



Gold Painting (R)



Silver Painting (R)



Door Installation Liner

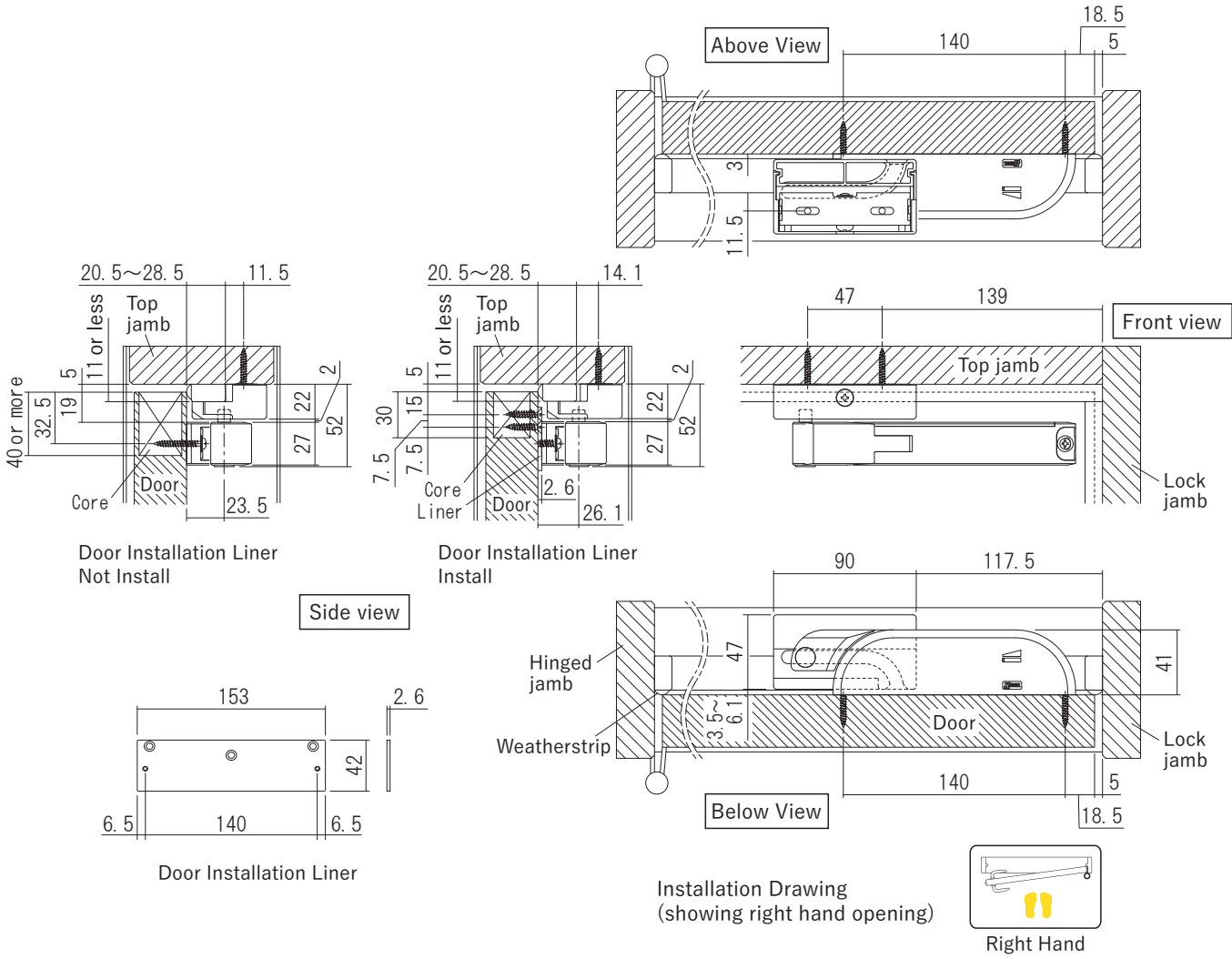
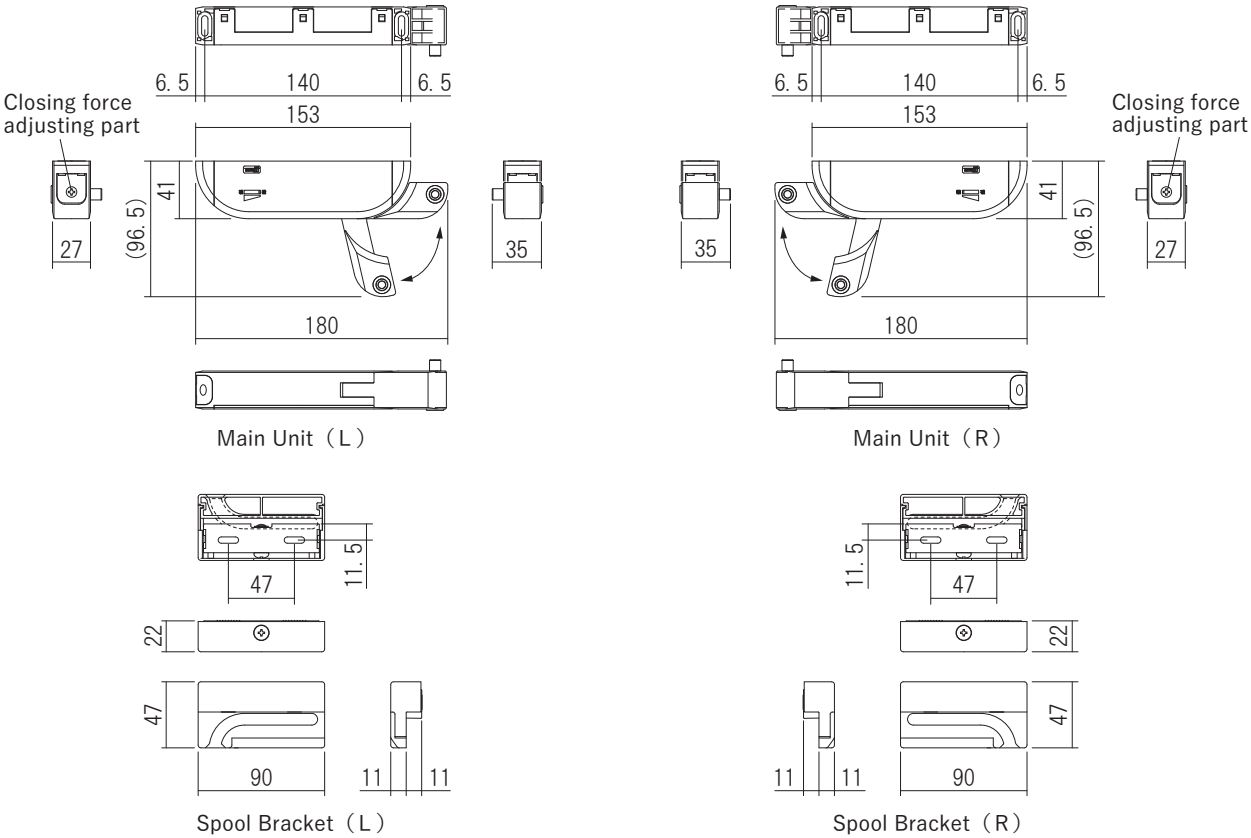


Right Hand

The arm extends once it is released from the spool bracket.



Right Hand



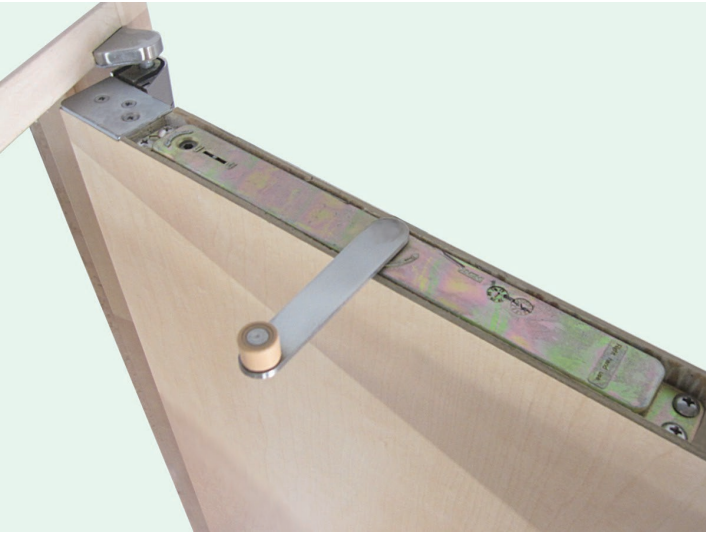
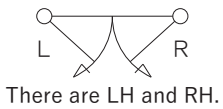
※ This drawing is only for reference.
For installation, please use the manual and pattern paper attached to the product.

Concealed Hinged Door Closer

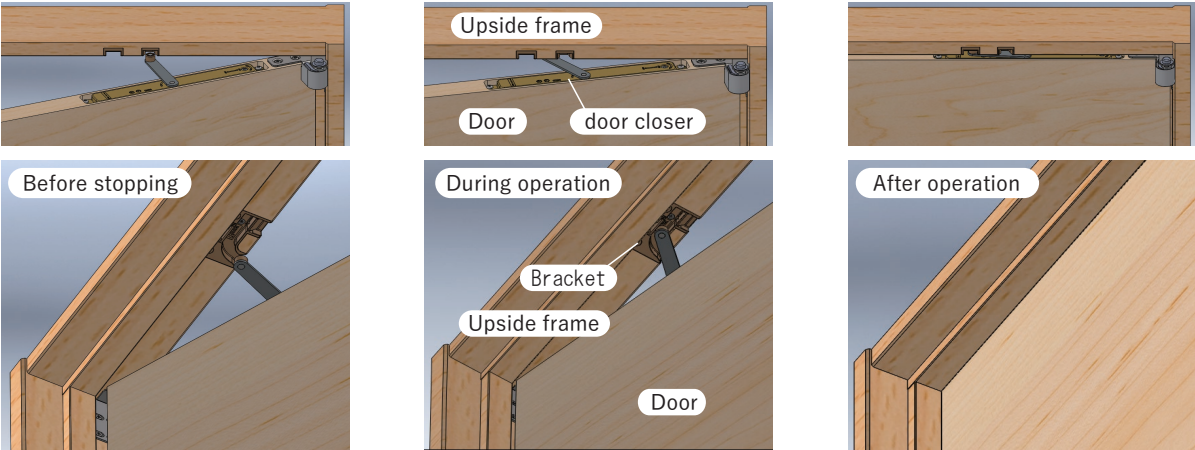
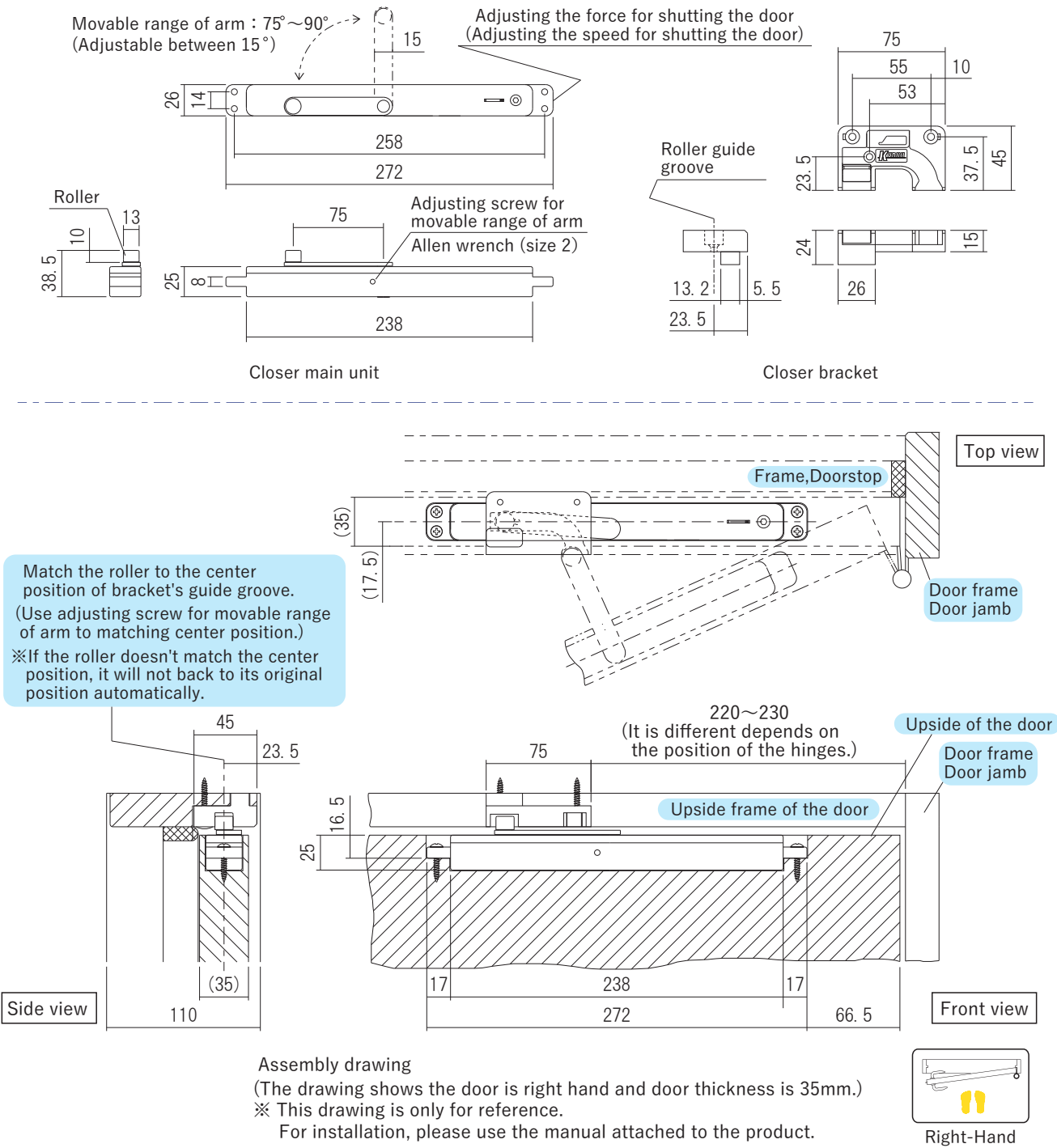
A concealed hinged door closer for indoor use provides the functionality of an overhead door closer but is fitted within the door leaf and frame. This product helps decelerate the speed of the door at ±100 mm towards the end and self-closing itself slowly to reduce the unpleasant noise of the door hitting the frame and prevent pinched finger accidents. In addition, this type of installation is aesthetically pleasing and helps reduce vandalism, as most of the door closer is hidden from sight. Once installed, the closing speed can also be adjusted.

Material: (Main unit) ZDC
(Spool bracket) Resin
Load capacity: 30kg(297N)
※Please contact us for 70kg(686N) pecifications.

| Concealed Hinged Door Closer | | |
|-----------------------------------------|---------|--------------|
| Product No. | | |
| LH | RH | Finish/Color |
| 312072L | 312072R | Brown |
| Screw included: | | |
| (Spool bracket) | | |
| 4 × 30 Truss head tapping screw 2pcs | | |
| 4 × 20 Flat head tapping screw(D7) 1pcs | | |
| (Main unit) | | |
| 4 × 30 Truss head tapping screw 4pcs | | |
| Attachment: Allen wrench | | |



The arm extends once it is released from the spool bracket.



Smart Door Stopper (Magnet Type)

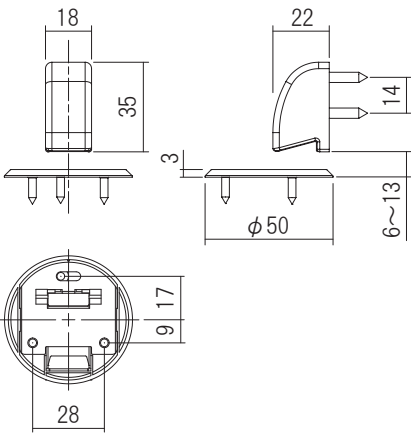


Using a magnet with a strong force, this door stopper can hold a door open and helps eliminate any damage to the adjoining wall. The installation is effortless and can be fixed either on a new or existing door. The mounting screws are invisible, and the height of the floor-mounted part is only 3 mm making this product barrier-free. This door stopper also passed the 100,000 times performance test. Moreover, this product won the Good Design Award for its seamless and smart design while maintaining maximum functionality.

Material: <Main unit>Magnet, Resin
<Base>Resin, Stainless
Load Capacity:30kg(294N)

| Smart Door Stopper (Magnet Type) | |
|----------------------------------|-----------------|
| Product No. | Finish/Color |
| 220251 | White |
| 220252 | Silver |
| 220253 | Gold |
| 220254 | Silver Painting |
| 220255 | Gold Painting |
| 220256 | Chrome Plating |

Screw included:
<Main unit>
4 × 20 Pan head tapping screw 2pcs
<Base>
3 × 12 Flat head tapping screw 3pcs



White



Silver



Gold



Silver Painting



Gold Painting



Chrome Plating



Doors Keeper (Magnet Type)

This door keeper uses a strong magnetic force that works well on a heavy door to stop it. Pushing the door once it is stopped will turn it into a lock position, and there will be no chance of it slipping and swinging through when opened. However, it will need a little to no effort to pull and close the door. The installation is effortless and can be fixed either on a new or existing door. In addition, the floor-mounted part is only 3 mm making this product barrier-free. This durable doorkeeper has also passed the 100,000 times performance test and won the Good Design award for its smart design while maintaining maximum functionality.

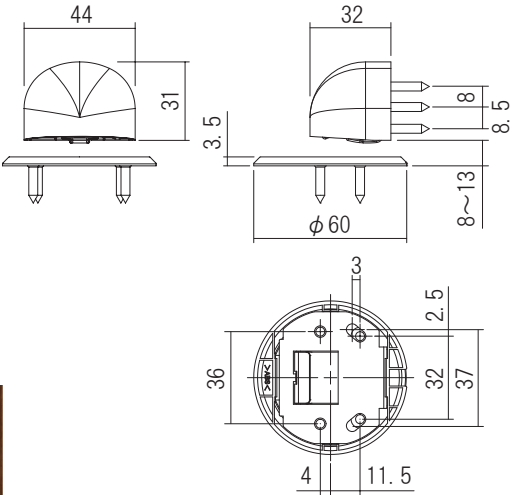
Material: <Main unit>Magnet, Resin
<Base>Resin, Stainless
Load Capacity:100kg(980N)

| Doors Keeper (Magnet Type) | |
|----------------------------|-----------------|
| Product No. | Finish/Color |
| 220261 | White |
| 220262 | Silver |
| 220263 | Gold |
| 220264 | Silver painting |
| 220265 | Gold painting |
| 220266 | Chrome plating |

Screw included:
<Main unit> 4 × 20 Pan head tapping screw 4pcs
<Base> 3 × 12 Flat head tapping screw 4pcs

| Door Keeper Concealed Type | |
|----------------------------|-----------------|
| Product No. | Finish/Color |
| 220271 | White |
| 220272 | Silver |
| 220273 | Gold |
| 220274 | Silver Painting |
| 220275 | Gold Painting |
| 220276 | Chrome Plating |

Screw included:
<Main unit> 4.2 × 32 Pan head tapping screw 4pcs
<Base> 3 × 12 Flat head tapping screw 4pcs



White



Silver



Gold



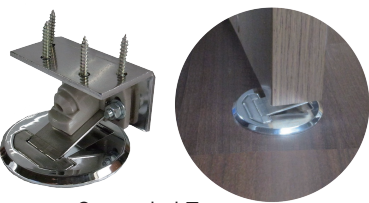
Silver Painting



Gold Painting



Chrome Plating



Concealed Type

Pivot Hinge

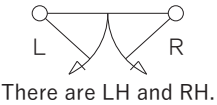
Patent

30kg OK

33-36mm

This hinge is fixed in the top and bottom of the door. The design is slim, so it doesn't interfere with the design of the door. Once the bottom part is fixed, the upper part is easily set by pulling down the upper pin and put it back in place. Once installed, the front-back, right-left, up-down adjustment can be made easily using a screwdriver. This type of hinge is very durable as it has passed 200,000 operation tests, and it is also available in four high-quality finishing colors.

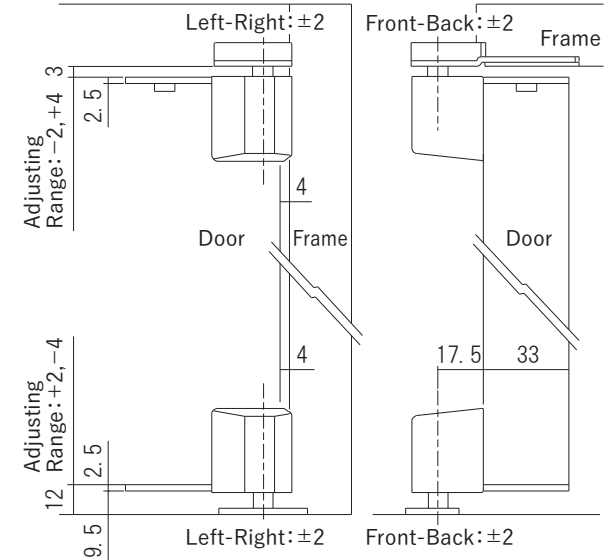
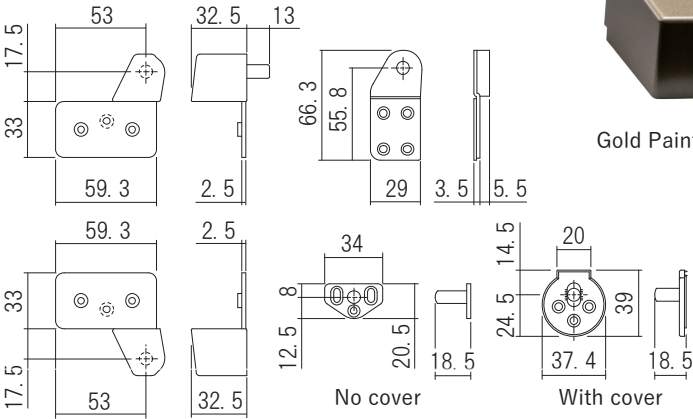
Material: (Main unit)Steel, ZDC (Cover)Resin
Load Capacity:30kg(294N)
Recommended Door Thickness:33mm
Adjusting Range:Front-Back±2, Left-Right±2
Up-Down +2mm, -4mm



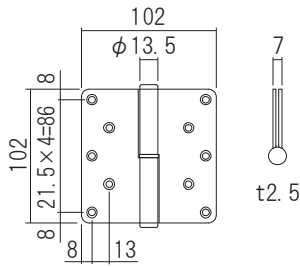
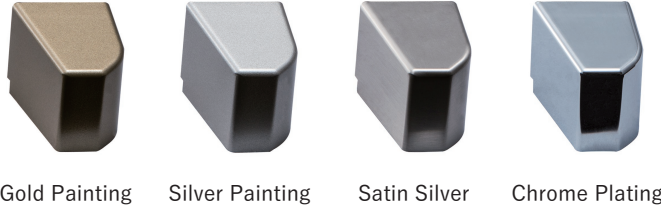
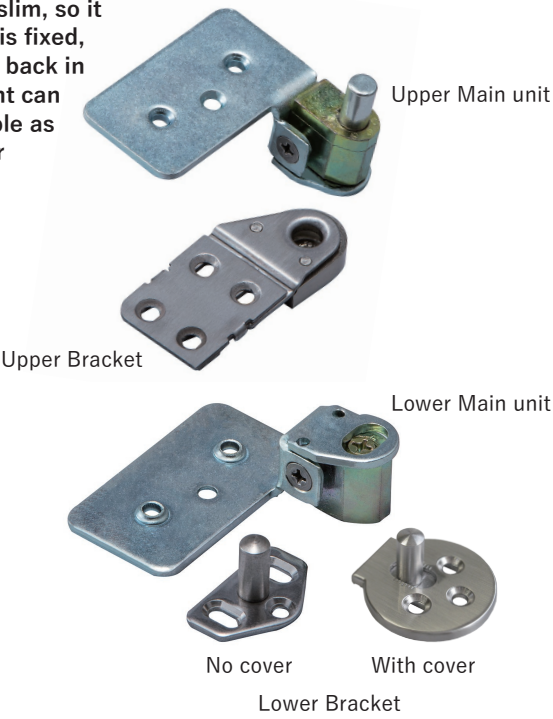
There are LH and RH.

| Pivot Hinge | | | |
|-------------|---------|---------------|-----------------|
| Product No. | | | |
| LH | RH | Lower Bracket | Finish/Color |
| 215011 | 215015 | No cover | Gold Painting |
| 215012 | 215016 | | Silver Painting |
| 215013 | 215017 | | Satin Silver |
| 215014 | 215018 | | Chrome Plating |
| 215011N | 215015N | With cover | Gold Painting |
| 215012N | 215016N | | Silver Painting |
| 215013N | 215017N | | Satin Silver |
| 215014N | 215018N | | Chrome Plating |

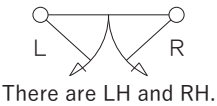
Screw included:
(Upper Bracket) 3.5×25 Flat head tapping screw 4pcs
(Lower Bracket) 3.5×25 Flat head wood screw 3pcs
(Main unit) 3.5×30 Flat head tapping screw 6pcs



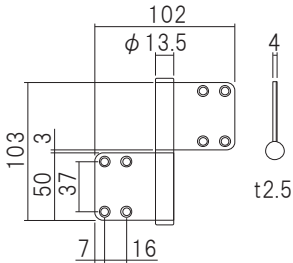
Drawing for Installation (Drawing for Right-Hand)
※ Digging is necessary on door and frame.



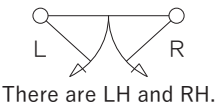
※ This drawing is Right-Hand



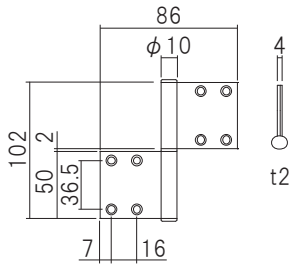
There are LH and RH.



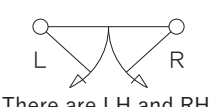
※ This drawing is Right-Hand



There are LH and RH.



※ This drawing is Right-Hand



There are LH and RH.



Silver Painting (R)



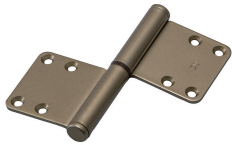
Amber Painting (R)



Gold Painting (L)



Amber Painting (R)



Gold Painting (R)



Raw Material (R)



Amber Painting (R)



Gold Painting (R)

Butt Hinge

294N OK

This standard type hinge consists of knuckles and leaves. The leaves use high-strength steel, and the hinge itself has passed 200,000 operation tests. Thus, this hinge has excellent strength and durability. In addition, the installation can be done easily as the leaves can be removed and then attached to the door and frame separately. The knuckles are also easy to insert and remove to ease the fixing process.

Material:Steel
Load Capacity:30kg(294N)_When using 2pcs

| Butt Hinge | | |
|-------------|------------|-----------------|
| Product No. | | |
| Left-Hand | Right-Hand | Finish/Color |
| 201021 | 201011 | Silver Painting |
| 201022 | 201012 | Amber Painting |
| 201023 | 201013 | Gold Painting |

Screw included: 4×25 Flat head tapping screw 10pcs

Lift Off Hinge

294N OK

This flag hinge uses high-strength steel for the leaves part, and the hinge itself has passed 200,000 operation tests. Thus, this hinge has excellent strength and durability. In addition, the installation can be done easily as the leaves can be removed and then attached to the door and frame separately. The knuckles are also easy to insert and remove to ease the fixing process.

Material:Steel
Load Capacity:30kg(294N)_When using 2pcs

| Lift Off Hinge | | |
|----------------|------------|----------------|
| Product No. | | |
| Left-Hand | Right-Hand | Finish/Color |
| 201222 | 201212 | Amber Painting |
| 201223 | 201213 | Gold Painting |

Screw included: 4×25 Flat head tapping screw 8pcs

Stainless Lift Off Hinge

294N OK

The leaves of this flag hinge uses SUS 304 with excellent resistance to corrosion and rust. Also, the hinge itself has passed 200,000 operation tests. Thus, this hinge has excellent durability. The installation can be done easily as the leaves can be removed and then attached to the door and frame separately. The knuckles are also easy to insert and remove to ease the fixing process.

Material:Stainless
Load Capacity:30kg(294N)_When using 2pcs

| Stainless Lift Off Hinge | | |
|--------------------------|------------|----------------|
| Product No. | | |
| Left-Hand | Right-Hand | Finish/Color |
| 201521 | 201511 | Raw Material |
| 201522 | 201512 | Amber Painting |
| 201523 | 201513 | Gold Painting |

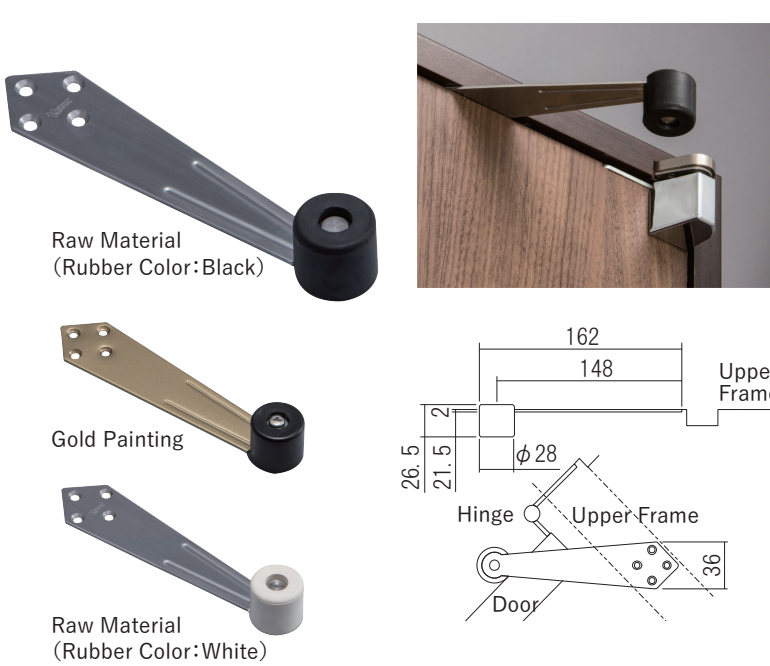
Screw included: 4×25 Flat head tapping screw 8pcs

Reversible Door Stopper

This reversible door stop is applicable on a right or left-hand door. By using this, it allows the door to be opened up to 90°. Furthermore, since this device is mounted on the top of the door instead of the floor, this door stopper is safe as it eliminates tripping hazards. This product has also passed 200,000 operation tests which ensure its durability in the long term.

Material: (Bracket)Stainless
(Door Stop part)Rubber
Load Capacity:30kg(294N)
Left or Right-Hand:Common use

| Reversible Door Stopper | | |
|-------------------------------------|---------------|--------------|
| Product No. | Finish/Color | Rubber Color |
| 220212 | Raw Material | Black |
| 220214 | Gold Painting | |
| 220216 | Raw Material | White |
| 220218 | Gold Painting | |
| Screw included: | | |
| 3.5×35 Flat head tapping screw 4pcs | | |

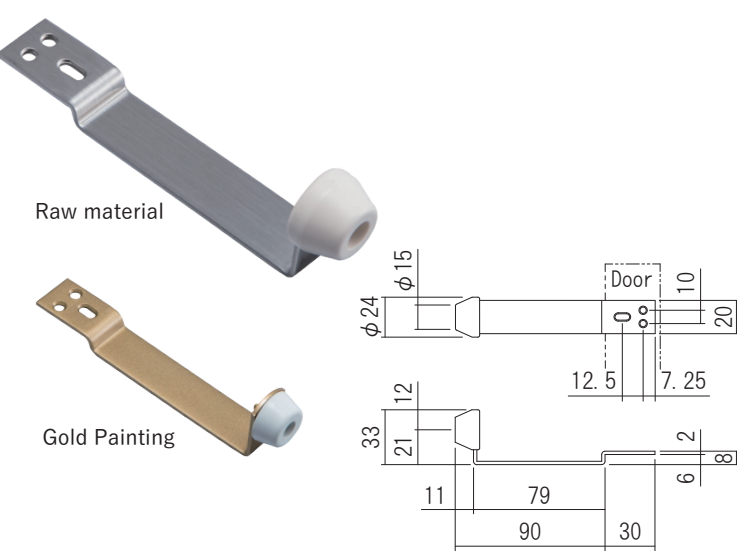


Public Housing Door Stopper

This type of door stopper is applicable on a right or left-hand door. This device helps the door stop once the rubber part hits the wall without damaging it. In addition, since this door stopper is mounted on the top of the door instead of the floor, this device is safe to use as it eliminates tripping hazards.

Material: (Bracket)Stainless
(Door Stop part)Rubber
Load Capacity:30kg(294N)
Left or Right-Hand:Common use

| Public Housing Door Stopper | | |
|--------------------------------|---------------|--------------|
| Product No. | Finish/Color | Rubber Color |
| 220221 | Raw material | White |
| 220223 | Gold Painting | |
| Screw included: | | |
| 3×16 Flat head wood screw 3pcs | | |

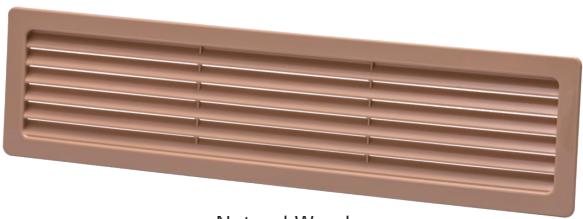
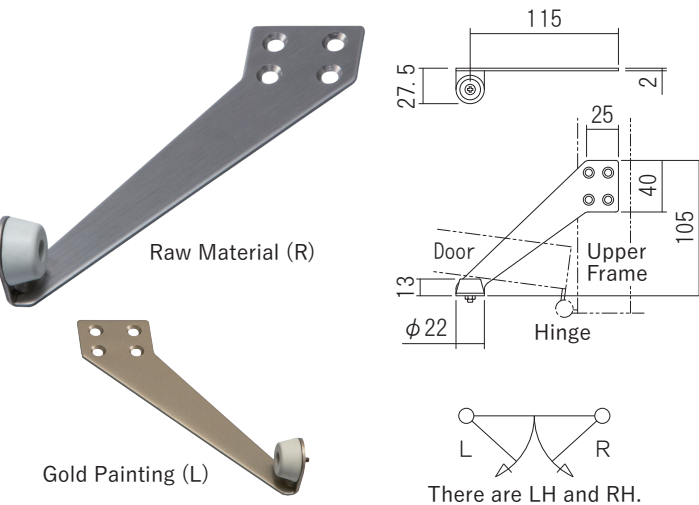


Upper Frame Door Stopper

As its name, this door stopper is fixed on the upper frame of the door. It allows the door to be opened up to 90°. Furthermore, since this device is mounted on the top of the door instead of the floor, this door stopper is safe as it eliminates tripping hazards.

Material: (Bracket)Stainless
(Door Stop part)Rubber
Load Capacity:30kg(294N)

| Upper Frame Door Stopper | | | |
|---------------------------------------------------|-----------|---------------|--------------|
| Product No. | Left-Hand | Right-Hand | Finish/Color |
| 220241 | 220231 | Raw Material | White |
| 220243 | 220233 | Gold Painting | |
| Screw included: 4×25 Flat head tapping screw 4pcs | | | |



Door Louver

This door louver is mainly used in nursing homes. It has 39% aperture ratio, which is suitable for the door to provide cross-flow and help maintain a healthy environment. It is available in three different colors to match the color of the doors used in most hospitals or other facilities.

Material:Resin

| Door Louver | | |
|------------------------------------------------|----------------|--------------|
| Product No. | Specification | Finish/Color |
| 630051 | For one side | Natural Wood |
| 630031 | | Medium Birch |
| 630011 | | Ivory |
| 630061 | For both sides | Natural Wood |
| 630041 | | Medium Birch |
| 630021 | | Ivory |
| Reversible door thickness:28~33mm | | |
| ※ Please contact us, if you want other colors. | | |

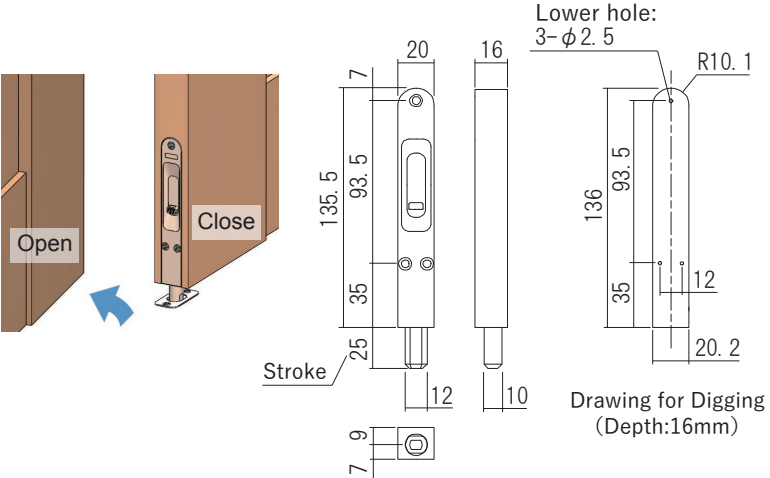
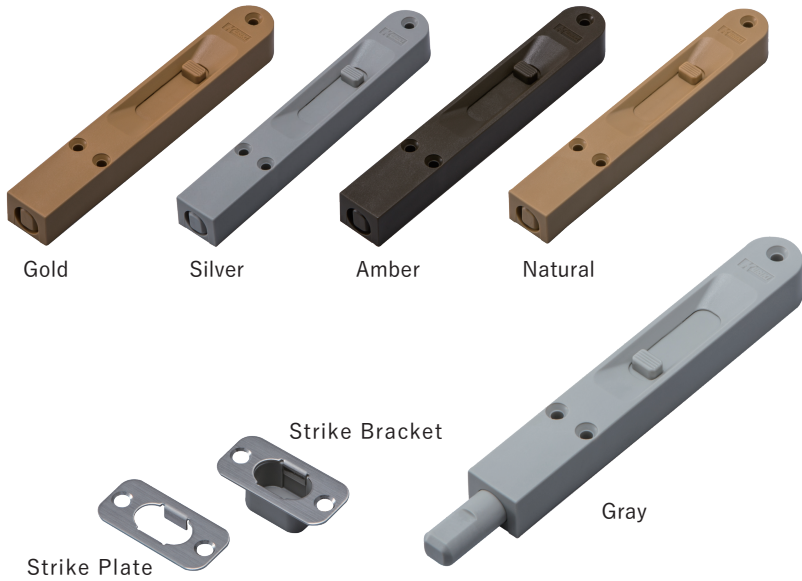
Flush Bolt

Using a rod flatten in some parts, this flush bolt will secure the inactive leaf of a pair of doors. The special feature also prevents the inactive door from shaking and rattling. The product is available in 5 different colors to match any color of doors.

Material: Resin, Stainless

| Flush Bolt | | |
|-------------|--------------------|--------------|
| Product No. | Specification | Finish/Color |
| 225013 | Strike Plate set | Gold |
| 225015 | | Silver |
| 225017 | | Amber |
| 225019 | | Natural |
| 225021 | | Gray |
| 225113 | Strike Bracket set | Gold |
| 225115 | (Depth 15mm) | Silver |
| 225117 | | Amber |
| 225119 | | Natural |
| 225121 | | Gray |
| 225213 | Strike Bracket set | Gold |
| 225215 | (Depth 20mm) | Silver |
| 225217 | | Amber |
| 225219 | | Natural |
| 225221 | | Gray |

Screw included:
(Flush Bolt)
3.5×32 Flat head wood screw 3pcs
(Strike Plate, Strike Bracket)
4×20 Flat head tapping screw(D7) 2pcs



Light Indicator Lens

This device helps users recognizing if the light inside a room is on from outside. The indicator lens can be easily attached to the door by pushing it into the hole (prior drilling needed). The thin ring on both ends is designed with a wider surface to hide the mark of the drilled hole on the door. It is available in three types: round type with $\Phi 35$ and $\Phi 38$, also square type.

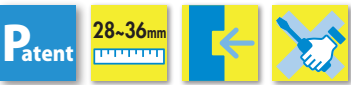
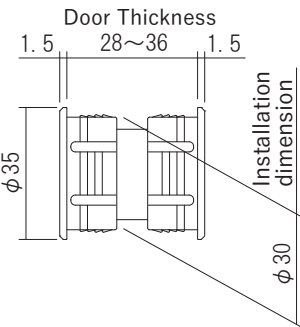


Round Type 35

The design is thin and well-trimmed, so it does not muddle the design of the door. We provide 7 different colors to complement any doors color.

Material: Resin
Door Thickness: 28~36mm

| Round Type 35 | | |
|---------------|--------------|------------|
| Product No. | Finish/Color | |
| 250311 | Birch | K |
| 250312 | Natural | N |
| 250313 | White | W |
| 250314 | Cherry | C |
| 250315 | Brown | B |
| 250316 | Dark | D |
| 250317 | Painting | (HL Color) |

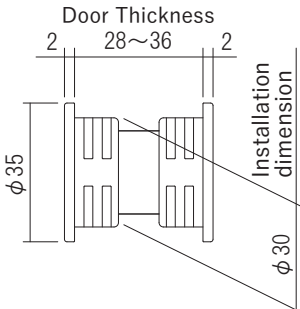


Round Type 35 (O-ring specifications)

It is a $\Phi 35$ O-ring specification.
Uses an O-ring to make it difficult to loosen.

Material: Resin
Door Thickness: 28~36mm

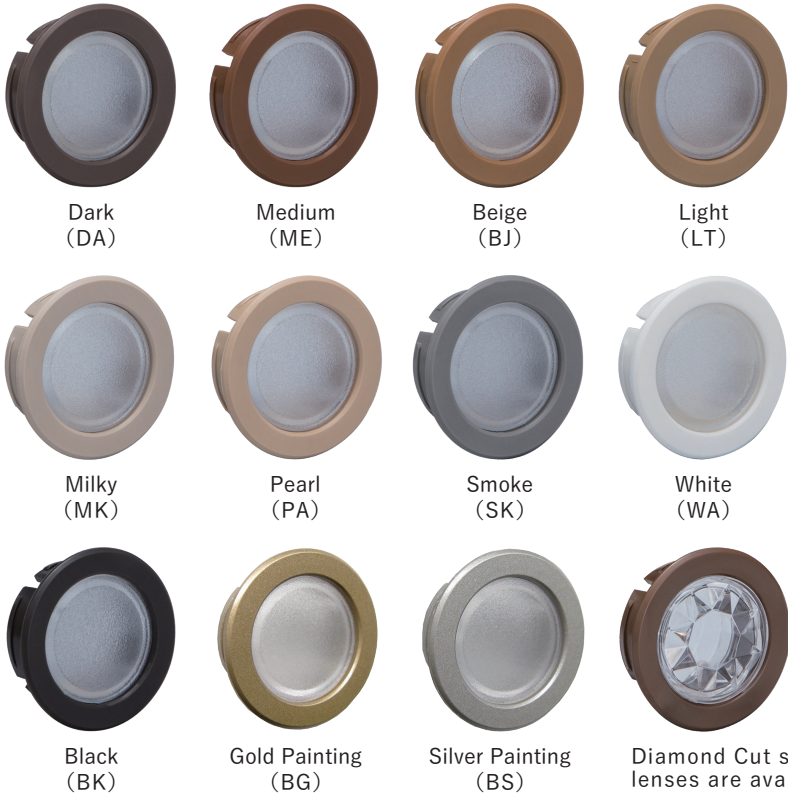
| Round Type 35 (O-ring specifications) | |
|---------------------------------------|--------------|
| Product No. | Finish/Color |
| 250318 | Clear |



Clear



Beige (BJ)

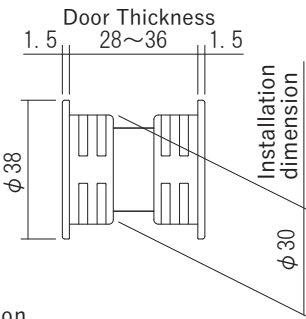


Round Type 38

Not only available in a convex lens, but the standard type also has a lens shaped like a diamond cut to reflect the light better. In addition, this type is available in 11 different colors to complement any doors color.

Material: Resin
Door Thickness: 28~36mm

| Round Type 38 | | |
|---------------|-----------------|----|
| Product No. | Finish/Color | |
| 250111 | Dark | DA |
| 250112 | Medium | ME |
| 250113 | Beige | BJ |
| 250114 | Light | LT |
| 250115 | Milky | MK |
| 250116 | Pearl | PA |
| 250117 | Smoke | SK |
| 250118 | White | WA |
| 250119 | Black | BK |
| 250120 | Gold Painting | BG |
| 250128 | Silver Painting | BS |



Square Type 38

This product has a sharp design on both edges to enhances the look of the door.
This square type is available in two exclusive finishes to complement any doors color.

Material: Stainless, Resin
Door Thickness: 28~36mm

| Square Type 38 | |
|----------------|---------------|
| Product No. | Finish/Color |
| 250211 | HL (Hairline) |
| 250212 | Mirror Finish |



HL (Hairline)



Mirror Finish

