

SLs Series

These SLs unified bathroom accessories are widely used for bathrooms and restrooms, from regular residential to high-end condominiums. This series features a luxurious chrome finish and invisible mounting screws. In addition, the SLs towel ring is available in 2 different types, round and square types.

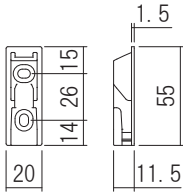
SLs Paper Holder

Material: <Base, Bracket>Resin  
<Paper cut plate, Bar>Stainless

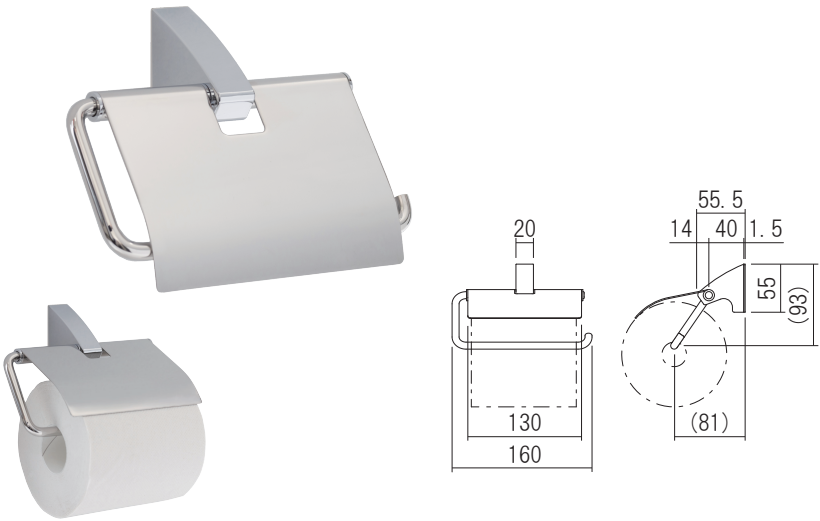
SLs Paper Holder

| Product No. | Finish/Color |
|-------------|--------------|
| 610895      | Chrome       |

Screw included:  
4 × 30 Truss head tapping screw 2pcs



Common base



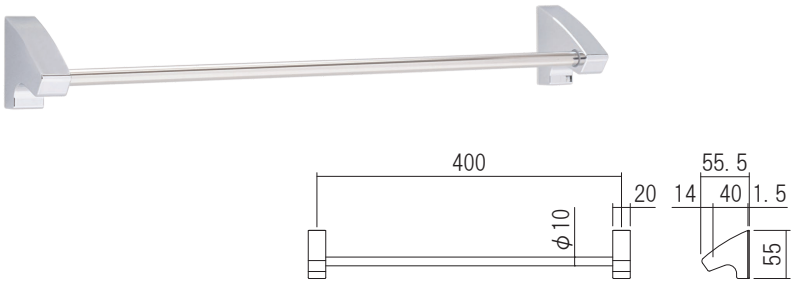
SLs Towel Bar

Material: <Base, Bracket>Resin  
<Bar>Stainless

SLs Towel Bar

| Product No. | Finish/Color |
|-------------|--------------|
| 610892      | Chrome       |

Screw included:  
4 × 30 Truss head tapping screw 4pcs



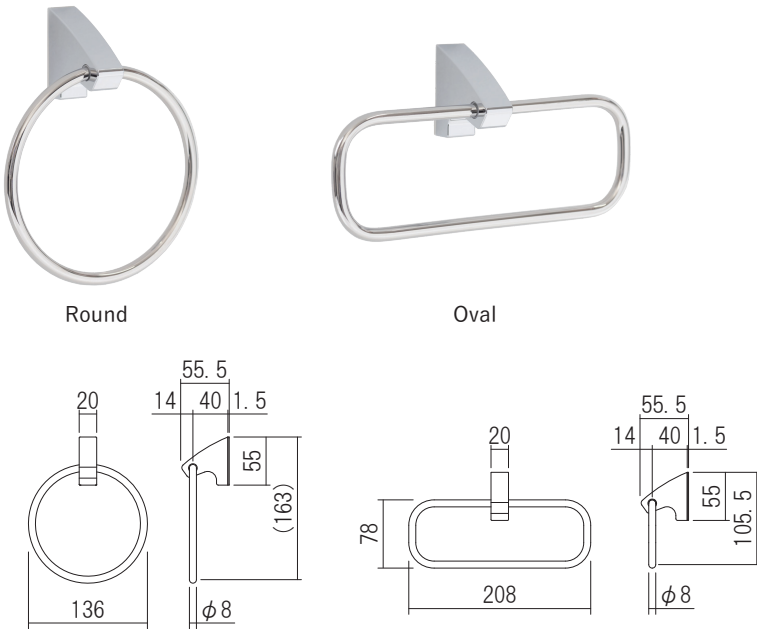
SLs Towel Ring

Material: <Base, Bracket>Resin  
<Ring>Stainless

SLs Towel Ring

| Product No. | Ring  | Finish/Color |
|-------------|-------|--------------|
| 610890      | Round | Chrome       |
| 610891      | Oval  |              |

Screw included:  
4 × 30 Truss head tapping screw 2pcs



One Touch Paper Holder

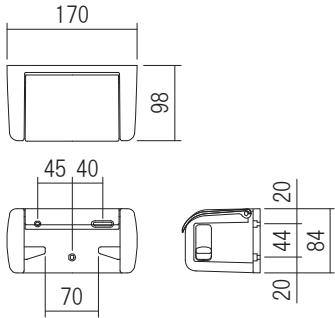
This simple and well-designed one-touch toilet paper holder is popular due to its effortless toilet roll changing process. Press the new roll up from the bottom, pull the old roll's core out, and now you've got a fresh batch of toilet paper. This product is widely used for restrooms in residential, business hotels, and public facilities. It's available in 4 different colors to suit your bathroom interior design.

Material: Resin

One Touch Paper Holder

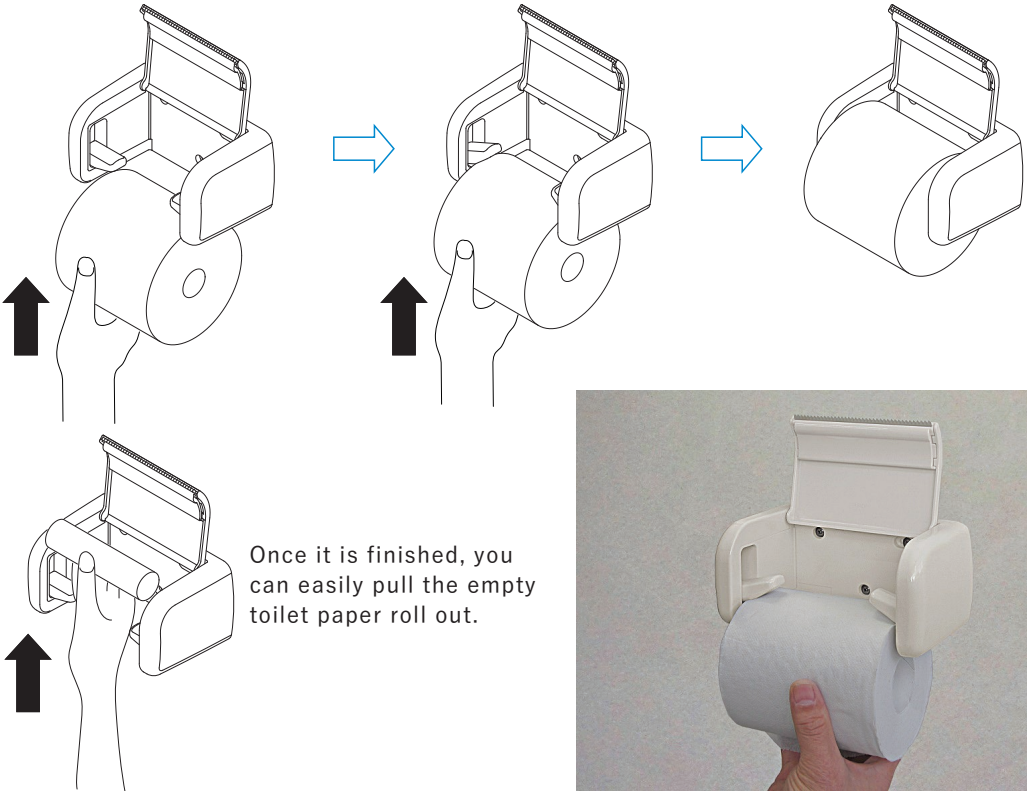
| Product No. | Specification | Finish/Color |
|-------------|---------------|--------------|
| 610201      | —             | White        |
| 610202      |               | Ivory        |
| 610203      |               | Pink         |
| 610205      |               | Black        |
| 610204      | One hand cut  | White        |

Screw included:  
4 × 30 Truss head tapping screw 3pcs



How to Hang a Toilet Paper

You can easily hang it over by simply pushing it up from the bottom.  
(Make sure the toilet paper holder's arms fit into both ends of the roll)



Once it is finished, you can easily pull the empty toilet paper roll out.

