

Flush Edge Pull



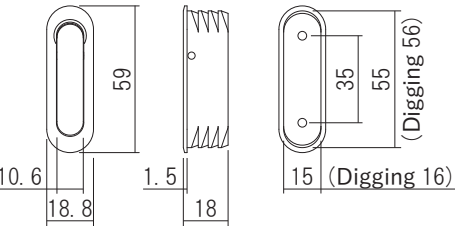
The edge pull is intended for the pocket door edge, but this one is also applicable to folding doors and underfloor storage. The product allows the finger grip to retract from the door by pushing the upper part. The appearance is flush mount, and the mounting screws are invisible.

Material:ZDC
Door Thickness:More than 27mm

Flush Edge Pull 59

Product No.	Finish/Color
220306	Paint Silver
220307	Mirror Silver
220308	Satin Silver
220309	Paint Black

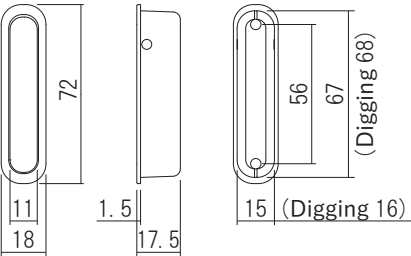
Screw included:
3×12 Flat head tapping screw 2pcs



Flush Edge Pull 72

Product No.	Finish/Color
220301	Paint Silver
220302	Mirror Silver
220303	Satin Silver
220304	Paint Black

Screw included:
4×20 Flat head tapping screw(D6) 2pcs



Satin Silver



Paint Silver

Mirror Silver

Paint Black



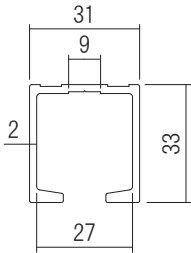
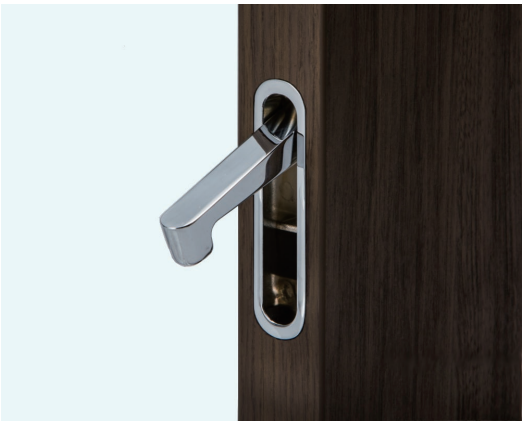
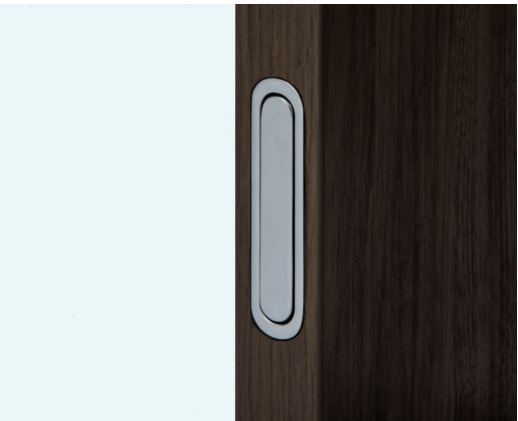
Paint Silver

Mirror Silver

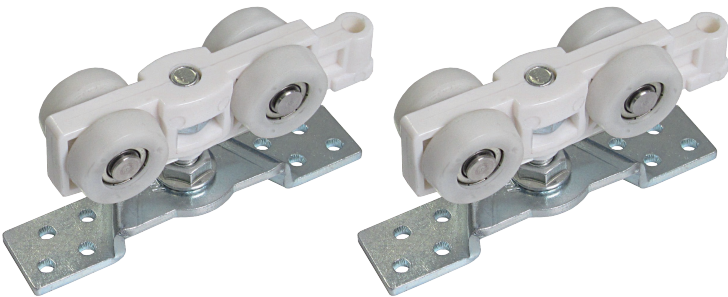


Satin Silver

Paint Black



Hung Door Rail



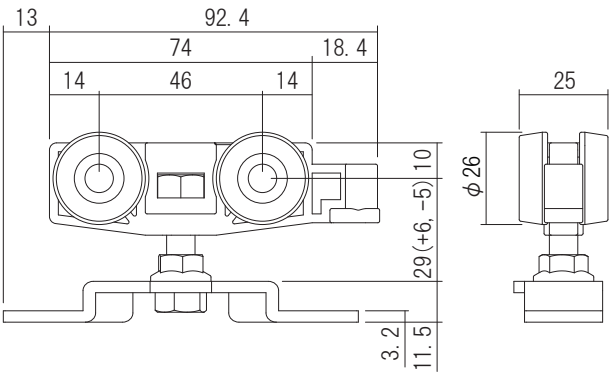
Heavy Duty Hung Door



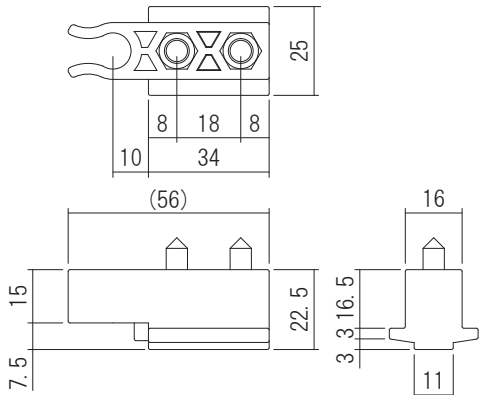
Upper Stopper



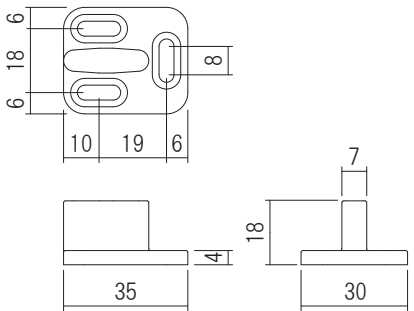
Floor Guide



Heavy Duty Hung Door



Upper Stopper



Floor Guide

Heavy Duty Hung Door



A set of top-hung track and rollers for indoor sliding doors allows doors weighing up to 100 kg to glide smoothly. This heavy-duty top-hung roller also has passed 500,000 operation tests to ensure the door will operate at its optimum for years to come.

Material:〈Roller〉Resin, Steel
〈Hung Door Rail〉Aluminum
〈Upper Stopper〉Resin
〈Floor Guide〉Resin
Load Capacity:100kg(980N)
Finish/Color:〈Roller〉White
〈Hung Door Rail〉Silver
〈Upper Stopper〉White
〈Floor Guide〉White

Heavy Duty Hung Door

Product No.	Length of the rail (mm)
320026	1,820
320027	2,730
320028	3,640

Parts included:

Roller 2pcs, Hung Door Rail 1pcs
Upper Stopper 2pcs, Floor Guide 1pcs

Screw included:

〈Roller〉
4×40 Oval head tapping screw 16pcs
〈Hung Door Rail〉
4×45 Flat head tapping screw
(The number depends on the rail length.)
〈Floor Guide〉
4×30 Flat head tapping screw 3pcs