

# Kuriki Japan Quality Hardware

HOTEL LEVER SERIES



**KURIKI**  
Japan Quality



桜

**SAKURA**  
(cherry blossoms)

“Beauty” — in the name of  
“Omotenashi”(hospitality).

The roots of Japan’s manufacturing quality is a consideration for users.  
“Sakura” is designed for safety, easy gripping and to fit with each situation.  
Its beautiful curve gently fits your palm, and produce quietness beauty even attached on door.  
We express “Spiritual Beauty” with the floral language of cherry blossoms.

“Sakura” — A combination of  
Japan’s technical capabilities and beauty.

Cherry blossoms are flowers that bloom in spring, which is the beginning of the seasons.  
It is an expectation for the season and the new world.  
And the lever handle is the product that also leads people to a new space beyond the door.  
The first impression at the moment of gripping the handle makes you imagine  
the space that spread out behind the door.

## Kuriki Japan

## Design Series



扇子

SENSU

A design for respect guests.

Sensu has been used in Japanese traditional art such as tea ceremony, Noh, Noh comedy and Kabuki play.  
It shows respect for the other person by putting it between the people facing each other.  
The lever “SENSU” is produced on a concept of people who open the door,  
and a sense of respect for the guests.

“Omotenashi” that starts with the door.

The kanji for 扇 is consisted from 戸(door) and 羽(wing).  
Sensu has been also called “Suehiro”, which means “spreading out like an opened fan”.  
Japanese fan has been considered as a lucky charm since old times,  
because the leading edge is spread open when it is opened like wings. (A symbol of increasing prosperity).  
SENSU is a product that gives hospitality to the guests from the moment they open the door.

## Kuriki Japan Quality

### Kuriki Design



Good Design Award

We have won the prestigious award  
“Good Design Award” four times.



Universal Design

We are devoting much effort to develop  
universal design.



Patent / Utility Model

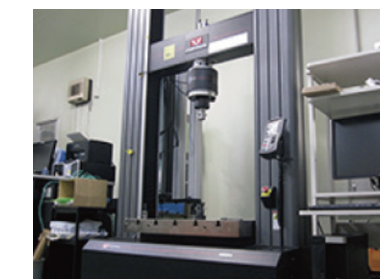
Five professionals belongs to the section.  
We have achieved 148 patents and 2 utility  
models. ※ Patents in Japan

### Kuriki Safety



Design Review

KURIKI conducts additional checks.  
We check our products to ensure safety from  
diversified perspectives.



Endurance Test×200,000

We test our products for endurance which is  
more strict than specified criteria based on  
condition. We have invented our own  
endurance testing machine to examine our  
product two hundred-thousand times more.



Prevent Danger

KURIKI’ s technology is available to prevent  
a crisis in everyday life.

### Kuriki Quality



Customer Management

The customers’ voices are sent to our  
development division and production division  
appropriately. This makes it possible to provide  
a fast response to our customers’ requirements.



Quality First

Skills and experiences of Kuriki which have  
been cultivated throughout long history  
are inherited today.



ISO9001 (00029-1999-AQ-KOB-RvA)

We always hope to produce stable products  
through our operating manual and  
organization structure.

**KURIKI**  
Kuriki Manufacture Co.,Ltd.

Kuriki Manufacture Co.,Ltd. HOTEL LEVER SERIES

1681 Onuki Namegata-city Ibaraki, 311-1724, Japan  
TEL (+81) 291-35-2636 FAX (+81) 291-35-2683 <http://www.kuriki-ss.co.jp/>

2017.11



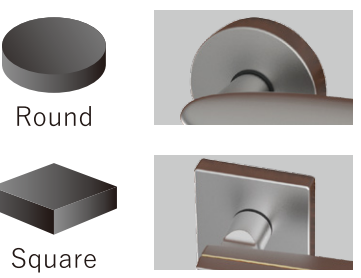
# JAPAN QUALITY, HOTEL LEVER SERIES

The premium hotel lever series meets KURIKI highest standard of design, safety and quality. We have deliver records to major hotels in Japan including five-star hotels.

+Various finish selection ※Please see the rightmost page for the Standard Finish List.

- Electric Paint Series ..... (EP)
- Plating Series..... (P)
- Premium Plating Series ..... (PP)
- Shot Blast Series ..... (SB)
- Alumite Finish ..... (AF)

+ ROSE

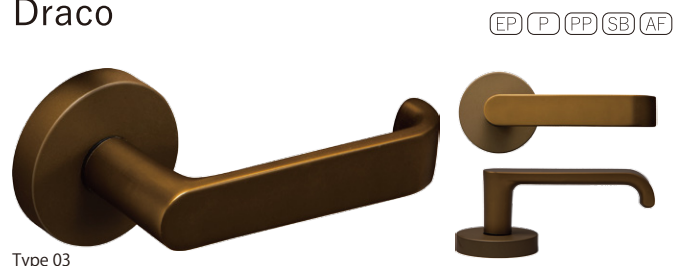


## Aquila



The design that looks like a bended column at two points. The diameter is adjusted to improve the holding comfortableness. It is also an excellent design in usability and safety.

## Draco



The grip has a sufficient thickness and safety with its folded edge. Also excellent in the operability. This design is both functional and aesthetically pleasing.

## Grus



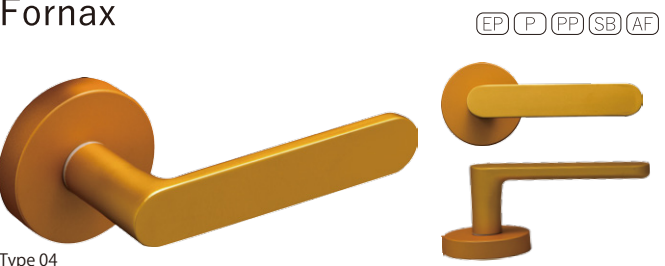
Beautiful streamline design that flows from the bottom to the top. It is sharp but it fits gently in hands with a beveling process.

## Crux



We aimed at improving excellent operability and comfortable fit feelings when it is held with the hand. Streamlined sharpness and well-balanced design that matches all types of finish.

## Fornax



The design is simple and fits naturally into other design. The gripping part has moderate thickness, and also excellent in safety with its rounded edge.

## Hydra



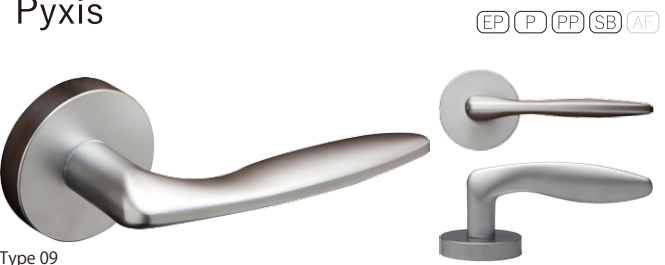
Gentle line with the rounded front edge of the gripping part. Gentle-looking with its rounded design, but also it remains the aspect of the original form, and has a unique figure.

## Musca



Designed in the image of bird' s feather. Intricate curved surface, but it has high strength and is easy gripping.

## Pyxis



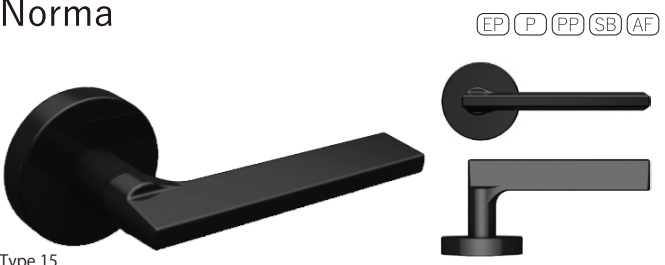
Designed in the image of the flow of the wind or water, and it matches all design. It fits well in hands and has natural figure.

## Volans



The thickness of the handle is easy gripping, and it is designed in the image of the streamline with no resistance. Well-balanced between the functionality and unique figure.

## Norma



A design created by silhouette of sharp line. The edgy shape looks high grade feeling.

## Pavo



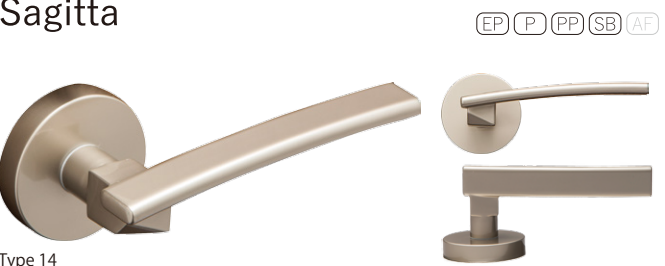
It has a stately face with thicken front surface.

## Cygnus



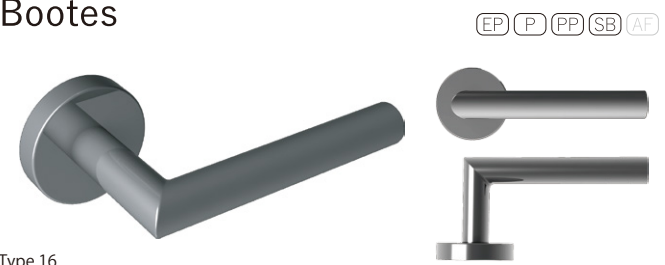
We emphasized the comfort of use when it is taken hold. The thickness of grip and the beveling is more highlighted.

## Sagitta



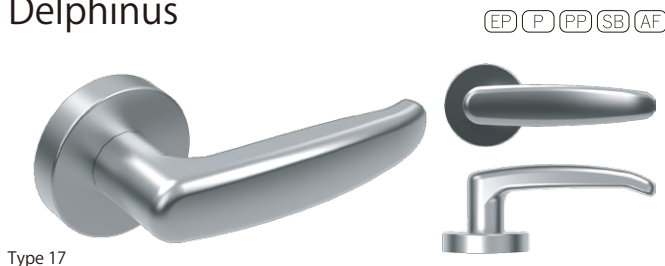
The handle is like a bended board. We pursued square shape of angular shaft as much as possible. Users are able to know the operation direction unconsciousness.

## Bootes



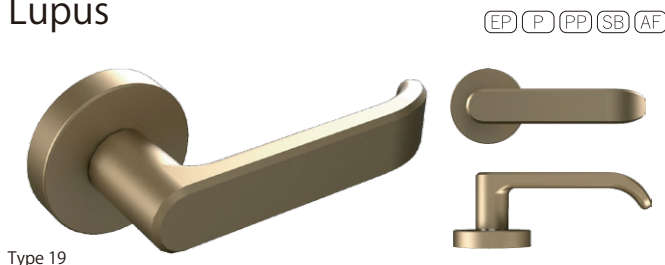
Cutting a column diagonally and the section is simply joined. It has an universal beauty. Thickness is adjusted for easy gripping, and the functionality is also excellent.

## Delphinus



This design is heaviness, stability, and familiarity feeling when it has holded. It is easy gripping, and is functionality also excellent.

## Lupus



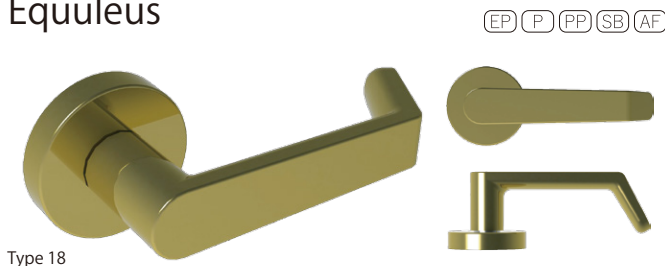
Particularly considered the stately feeling and the safety. Easy to put hands on, and have a good usability.

## Sensu



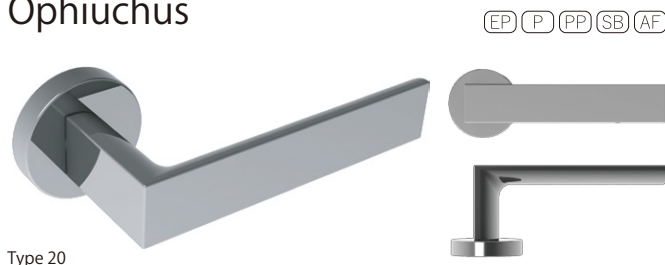
Japan Design Series. Designed image is of the shape of a folding fan. An advanced big curving surface treatment achieved the both sensitive design and easy gripping. We can customize the materials and the colors of each part.

## Equuleus



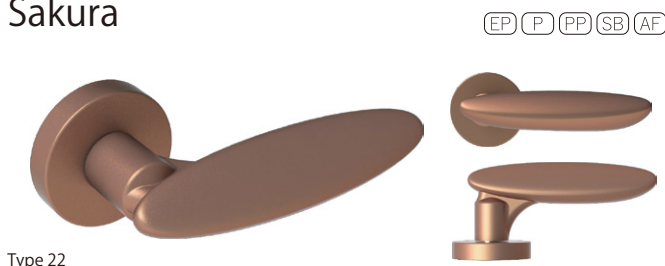
It achieved good balance between slim shape and safety. Easy gripping, and the functionality is also excellent.

## Ophiuchus



Heavily design with its large surface. The figure which is designed boldly to highlight the surface has an universal beauty.

## Sakura



Japan Design Series. Continuous curve line compose whole shape which is conceived from cherry blossom petals. It is simple and unique design. Please feel the fitting of hand grip.

※ Gloss or Mat, or the finish that is not shown in our product lineup is also available. Please do not hesitate to contact us. We offer free samples.

TEL (+81) 291-35-2636 FAX (+81) 291-35-2683  
<http://www.kuriki-ss.co.jp/>

# Standard Finish List

■Electric Paint Series (EP)			
SW (Satin Silver)	SA (Satin Amber)	SG (Satin Gold)	SB (Satin Black)
■Plating Series (P)			
CR (Chrome Plated)	PG (Gold Plated)	SN (Soft Nickel)	
■Premium Plating Series (PP)			
PC (Pearl Chrome)	CG (Champagne Gold)	BC (BS Chrome)	
■Shot Blast Series (SB)			
SPC (Shot Pearl Chrome)	SCG (Shot Champagne Gold)	SBC (Shot BS Chrome)	
■Alumite Finish (AF)			
AS (Alumite Silver)	AG (Alumite Gold)	AA (Alumite Amber)	
AB (Alumite Black)	ADA (Alumite Dark Amber)	AGr (Alumite Gray)	
ABC (Alumite BC)	ANB (Alumite Navy Blue)	AR (Alumite Red)	
ABr (Alumite Bronze)	ACG (Alumite Champagne Gold)	APC (Alumite Pearl Chrome)	
AWG (Alumite White Gold)	AP (Alumite Pink)	APu (Alumite Purple)	