

Bathroom Push Pull Lock

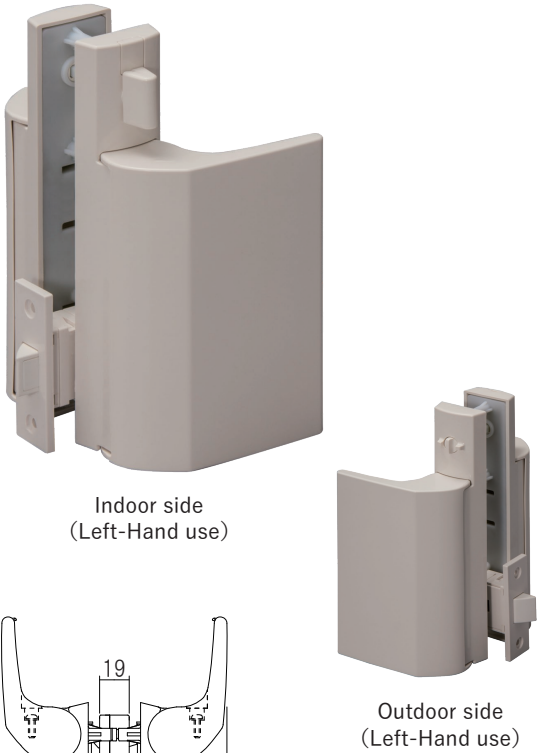


Product that received the 2011 Good Design Award.
This Push Pull Lock has a combination of beautiful design and good operability.
The door is very easy to open and close, even when your hands are occupied.
It's popular for its smooth curved line and a pleasant hand feeling.

Material: Resin

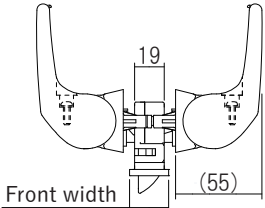
Bathroom Push Pull Lock		
Product No.	Specification	Finish/Color
FUP-35LK/W	Left-Hand	White
FUP-35RK/W	Right-Hand	

Screw included:
M4×40 Truss head machine screw 3pcs
M4×12 Pan head machine screw with a washer 2pcs
M4×10 Flat pan head machine screw 2pcs

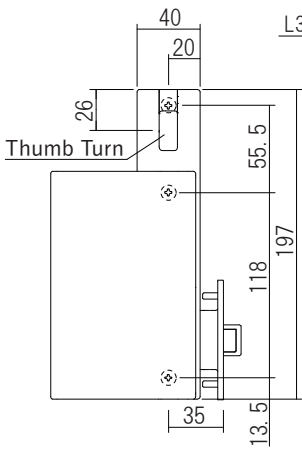


Indoor side
(Left-Hand use)

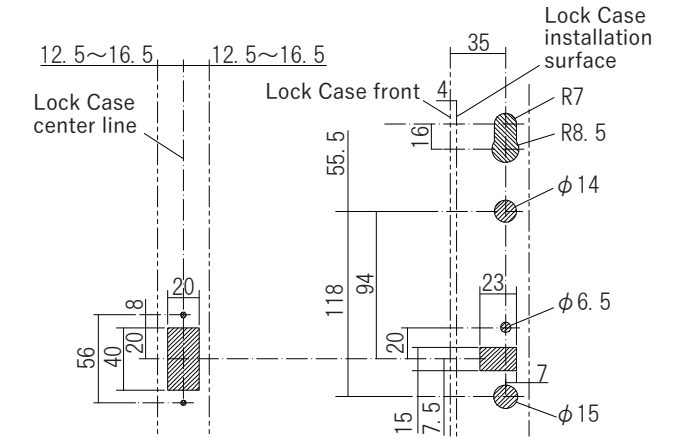
Outdoor side
(Left-Hand use)



Front width



This drawing is for Right-Hand use.



Cutaway view

(mm)				
Door Thickness	L 1	L 2	L 3	Front width
33	15	4	3	25
30	15	1	0	25
29	10	5	4	25
25	10	1	0	22



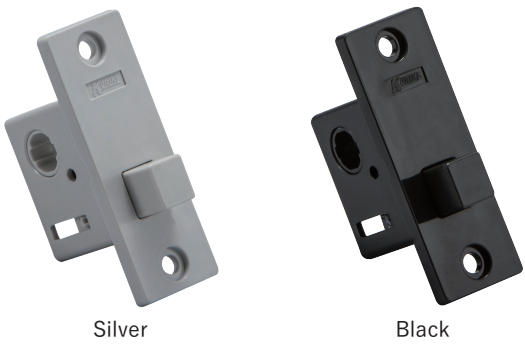
Child Lock

Child Lock for bathroom door.
Can prevent children from entering bathroom alone by install it at a place that cannot be reached by children.

Material: Resin
Door Thickness: 30mm

Child Lock	
Product No.	Finish/Color
610-920	Pearl White
610-921	S White
610-922	Silver
610-923	Black

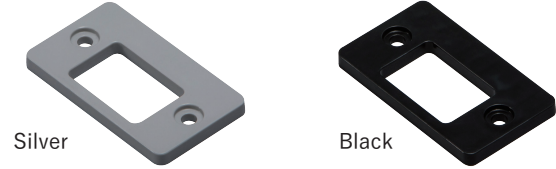
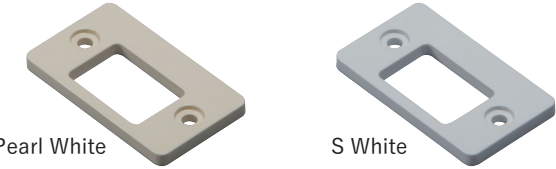
Screw included:
M4 Flat pan head machine screw 4pcs
※ The Black lock case is only for Black finish.
For other color finishes, the lock case is Silver.



lock case



Thumb Turn

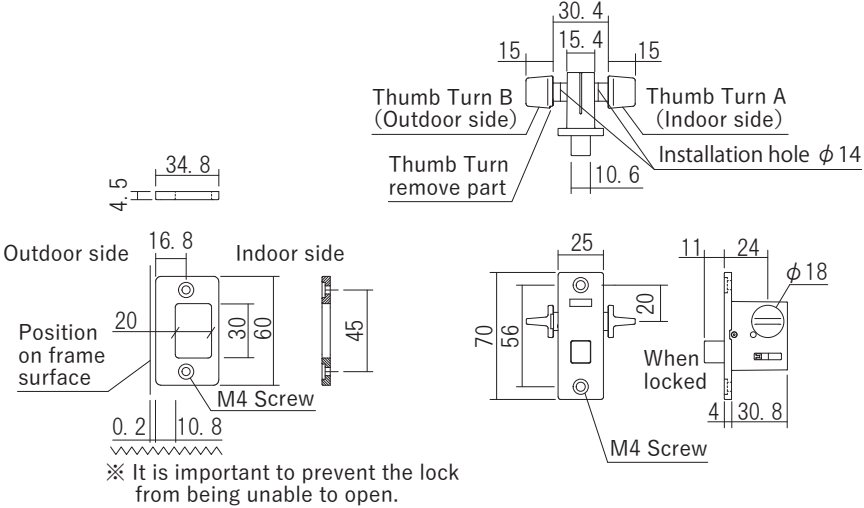


Strike



When unlocked

When locked



※ It is important to prevent the lock from being unable to open.