

YH Laundry Pipe



A clean bathroom laundry pole made of Stainless.
The brackets support the pipe securely.

Material: 〈Pipe〉Stainless
〈Bracket〉Resin
Load Capacity:98N(10kg)
Finish/Color:White Gray

YH Laundry Pipe set

Product No.	Bathroom's wall dimension(mm)
610-621	1,050
610-622	1,100
610-623	1,150
610-624	1,200
610-625	1,300
610-626	1,400
610-627	1,600
610-628	1,750

Screw included:
4 × 25 Truss head tapping screw 4pcs

Bracket set
Product No.
610-629
Screw included:
4 × 25 Truss head tapping screw 4pcs
※ It is included in the main body set.

YH Laundry Pipe set

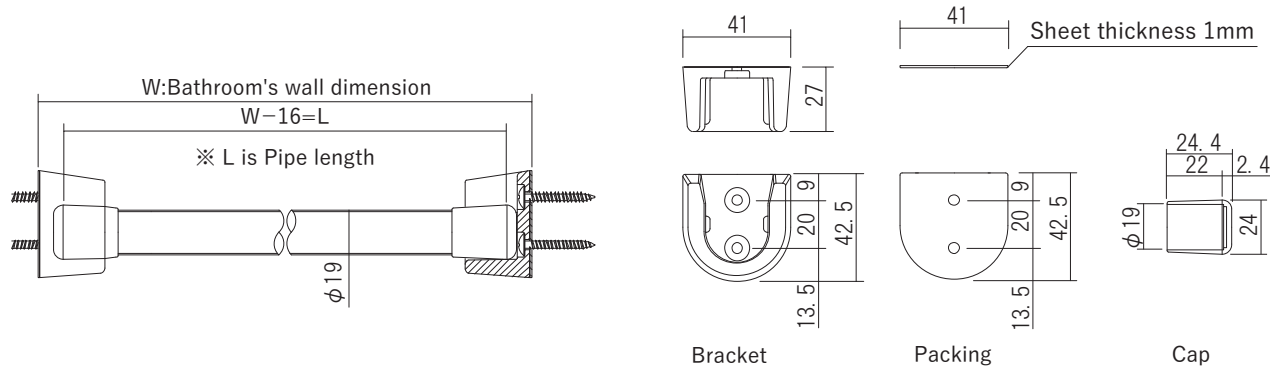
Pipe	1pcs
Bracket set	1set

Bracket set	
Bracket	2pcs
Packing	2sheets
Installation screw	4pcs

Warning

Safety Load Capacity:98N(10kg)

There is a reinforcing plate on the back of an usual bathroom wall.
But some bathrooms do not have reinforcing plates on the back of their walls.
Please install the bracket on the wall which has a reinforcing plate, otherwise only wall is not strong enough to support the load capacity.



Installation state



Bracket



Pipe
(With one set of cap)



KS Flexible Laundry Pipe

A clean bathroom laundry pipe that can be installed in the range of length 950 to 1,800 mm.
The brackets support the pipe securely.

Material: 〈Pipe〉Stainless
〈Bracket〉Resin
Load Capacity:98N(10kg)
Finish/Color:White Gray

KS Flexible Laundry Pipe set

Product No.	Bathroom's wall dimension(mm)
610-651	950~1,800

Screw included:
4 × 30 Truss head tapping screw 4pcs

Bracket set
Product No.
610-655
Screw included:
4 × 30 Truss head tapping screw 4pcs
※ It is included in the main body set.

KS Flexible Laundry Pipe set

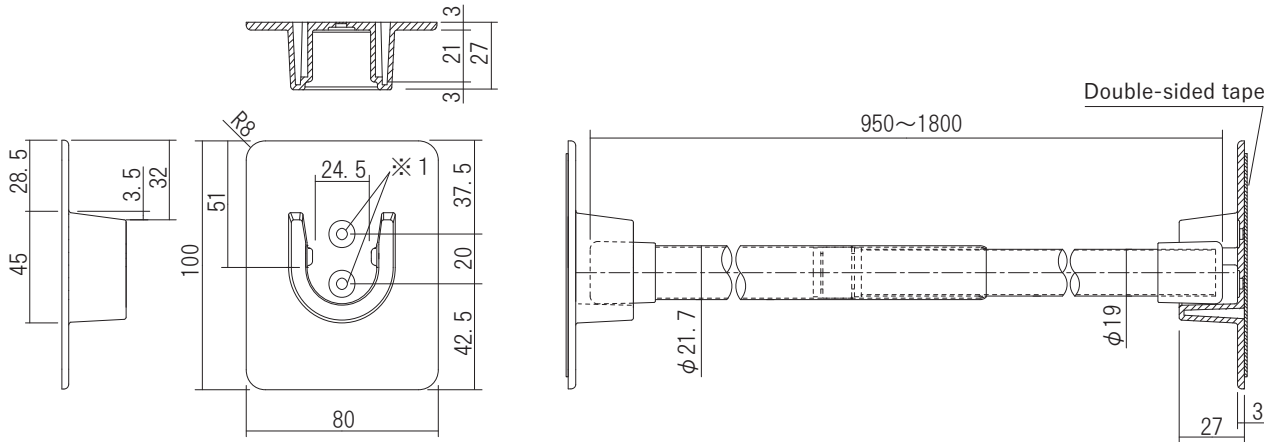
Pipe	1pcs
Bracket set	1set

Bracket set	
Bracket	2pcs
Double-sided tape	2sheets
Installation screw	4pcs

Warning

Safety Load Capacity:98N(10kg)

There is a reinforcing plate on the back of an usual bathroom wall.
But some bathrooms do not have reinforcing plates on the back of their walls.
Please install the bracket on the wall which has a reinforcing plate, otherwise only wall is not strong enough to support the load capacity.



※1 You can dig holes for installation, the double-sided tape and fix screws can be used together.