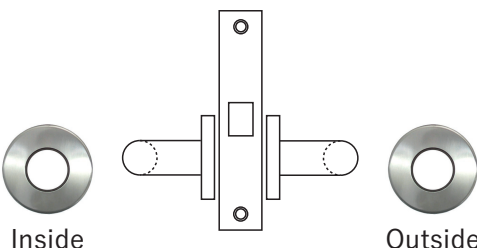
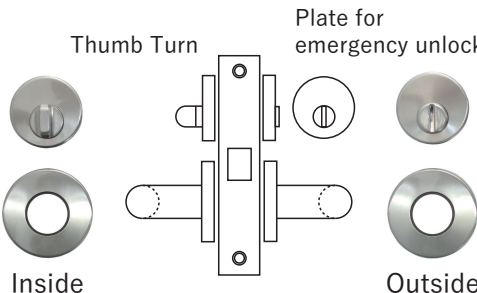
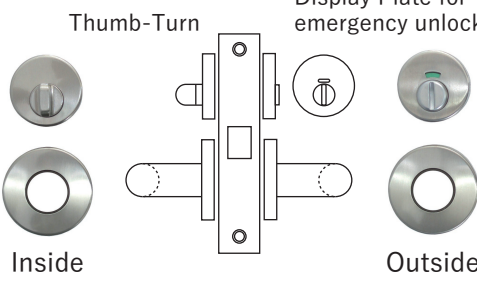
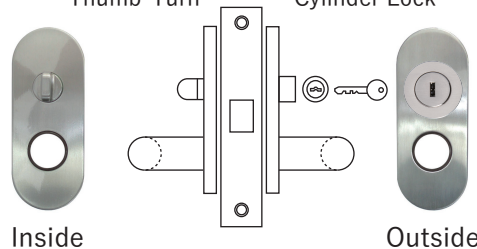


Concept

- Kuriki provide the high-performance and low price through 5 approaches such as material, functions, design, performances and cost.
- All Lever Handles and Cases have passed strict endurance tests.
- We provide with a wide range design that can match your usage.

Locks Function

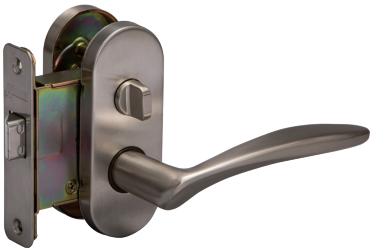
Type	Reference Diagram	Example of Use
1 Passage Lock		The Passage Lock is installed in the door that not necessary to lock such as a Closet, a Children Room, a Living Room and a Dining Room.
2 Privacy Lock		The Privacy Lock is installed in the door that can be locked inside of the room. In an emergency situation, someone can open it from outside by a tool.
3 Indicator Lock		The Indicator Lock is installed in the door that need to display a lock sign. It can be used in a Bathroom and a Toilet. In an emergency situation, someone can open the lock from outside by a tool.
5 Simple Cylinder Lock		The Simpe Cylinder Lock is installed in the door that can be locked inside by a thumb turn and outside by a key, such as for a main door or a private room.

Lock Cases Type

FL (Backset 51)

Type of Lock Case that made of steel with a low price.

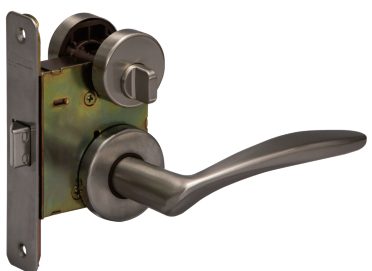
Material:〈Case〉Steel 〈Front〉Stainless  
Finishing:〈Case〉Chromate 〈Front〉Hairline  
Front Shape:Square, Round



FR (Backset 51)

Type of Lock Case that made of steel with a low price.

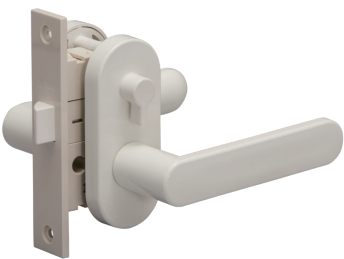
Material:〈Case〉Steel 〈Front〉Stainless  
Finishing:〈Case〉Chromate 〈Front〉Hairline  
Front Shape:Square, Round



KU (Backset 32)

Type of Lock Case is soundproofed, and made of Resin.

Material:〈Case・Front〉Resin  
Finishing:〈Case・Front〉Pearl White  
Front Shape:Square



FT (Backset 51)

Tubular Lock Case and easy to process the door.

Material:〈Case〉ZDC 〈Front〉Stainless  
Finishing:〈Case〉Chromate 〈Front〉Hairline  
Front Shape:Square, Round



FU (Backset 32, 51)

Lock case that made of Stainless with strong durability.

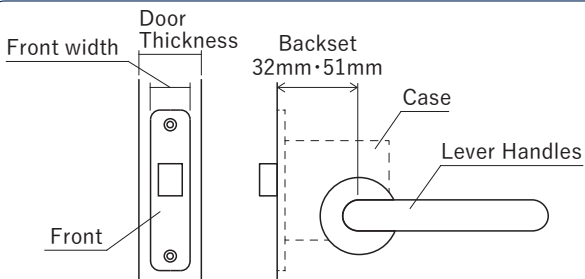
Material:〈Case・Front〉Stainless  
Finishing:〈Case〉Metal Fabric 〈Front〉Hairline  
Front Shape:Square



LU (Backset 32)

Lock Case that made of Resin is soundproofed.

Material:〈Case〉Resin 〈Front〉Stainless  
Finishing:〈Case・Front〉Silver  
Front Shape:Square



What is a Backset ?

Backset means the distance from the Case front to the center point of Lever handle and Thumbturn.

How to measure the backset

Use a scale to measure from the edge of the door to the center of bore holes for lever handle and thumbturn use.