



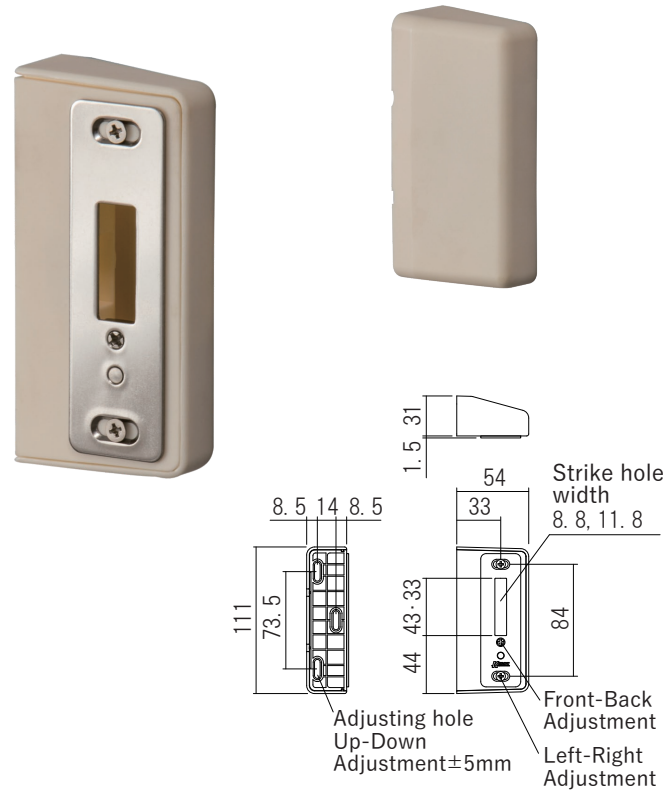
## Outset Sliding Door Hook Lock Strike

A special strike that used for a outset sliding door.  
It has a simple design which will fit the atmosphere of your room.

Material:Stainless, Resin  
Installation Range:Left-Right  $\pm 4\text{mm}$   
Front-Back 5.5~7.5mm  
Finish/Color:〈Cover〉White  
〈Bracket〉Barrel Polishing

Outset Sliding Door Hook Lock Strike		
Product No.	Strike hole width(mm)	Spesification
330-005	8.8×43	
330-006	11.8×43	
330-007	11.8×33	Trigger

Screw included:  
 〈Base〉  
 4 × 50 Truss head tapping screw 3pcs  
 〈Plate〉  
 3.5 × 16 Flat head tapping screw 2pcs



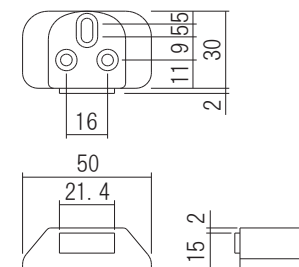
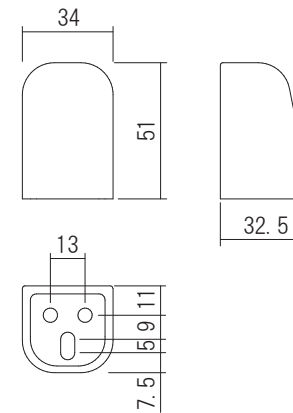
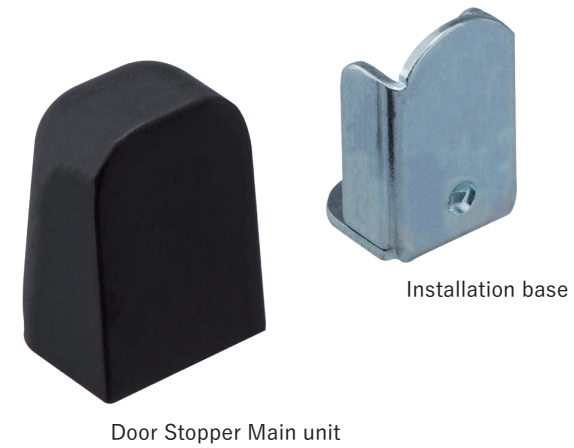
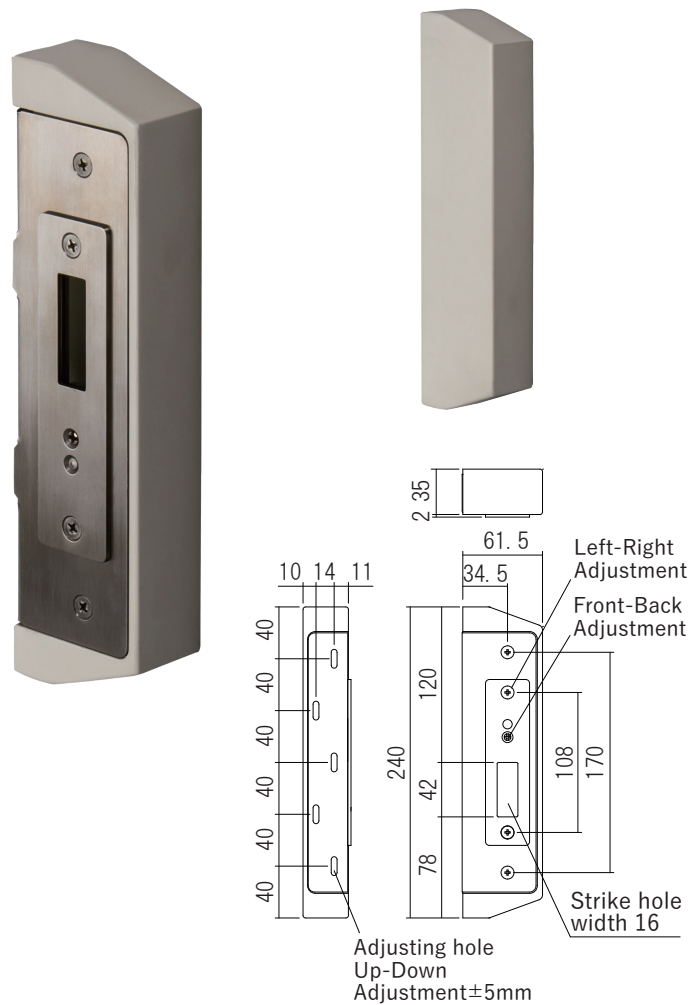
### OS Sliding Door Wood Strike

This is outset sliding strike door of high strength type.

Material:Stainless, Natural wood  
Installation Range:Left-Right  $\pm 4\text{mm}$   
Front-Back  $5.5\sim 7.5\text{mm}$   
Finish/Color:〈Cover〉White  
〈Bracket〉Hairline

OS Sliding Door Wood Strike	
Product No.	Strike hole width(mm)
330-010	16 × 42

Screw included:  
 〈Front〉  
 M5 × 10 Flat head machine screw 2pcs  
 〈Cover〉  
 4.5 × 20 Flat head tapping screw 2pcs  
 〈Base〉  
 4 × 50 Truss head tapping screw 5pcs



### Outset Upper Door Stopper

**Door stopper installed to the wall for  
outset sliding door use.**

Material: Steel, Resin

Outset Upper Door Stopper	
Product No.	Finish/Color
330-065	Black

※ 1pc price.  
Screw included:  
5×50 Pan head tapping screw 3pcs



### Outset Lower Stopper

The stopper installed on the floor for the outset sliding door use.

Material: Resin

Outlet Lower Stopper	
Product No.	Finish/Color
330-063	Silver
330-064	Black

※ 2pcs price.  
Screw included:  
4 × 30 Flat head tapping screw 6pcs

