

Sliding Door Parts

Sliding Door Soft Closer set

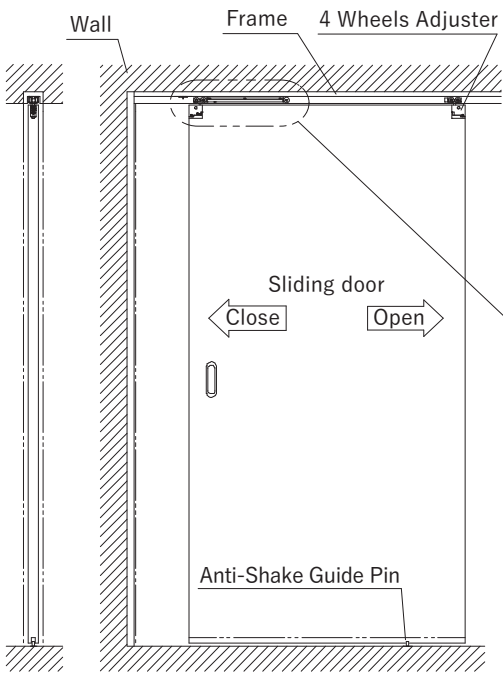
This door closer will shut the door silently and slowly when it reached 70mm before the door jamb. Even you close the door uncarefully. This door closer prevents the door from being unclosed and can save electricity when air conditioner is being used. The 4 Wheels Adjuster has a good durability and performance.

Material: <Main unit, Hook>Stainless
<4 Wheels Adjuster>Resin
<Sliding Door Rail>Aluminum
<Guide Pin>Stainless, Resin
Load Capacity:294N(30kg)
Installation Range:Up-Down ± 3mm, Left-Right ± 2mm
Finish/Color:<Main unit, Hook>Raw Material
<4 Wheels Adjuster>Amber
<Sliding Door Rail>Silver
<Guide Pin>Raw Material

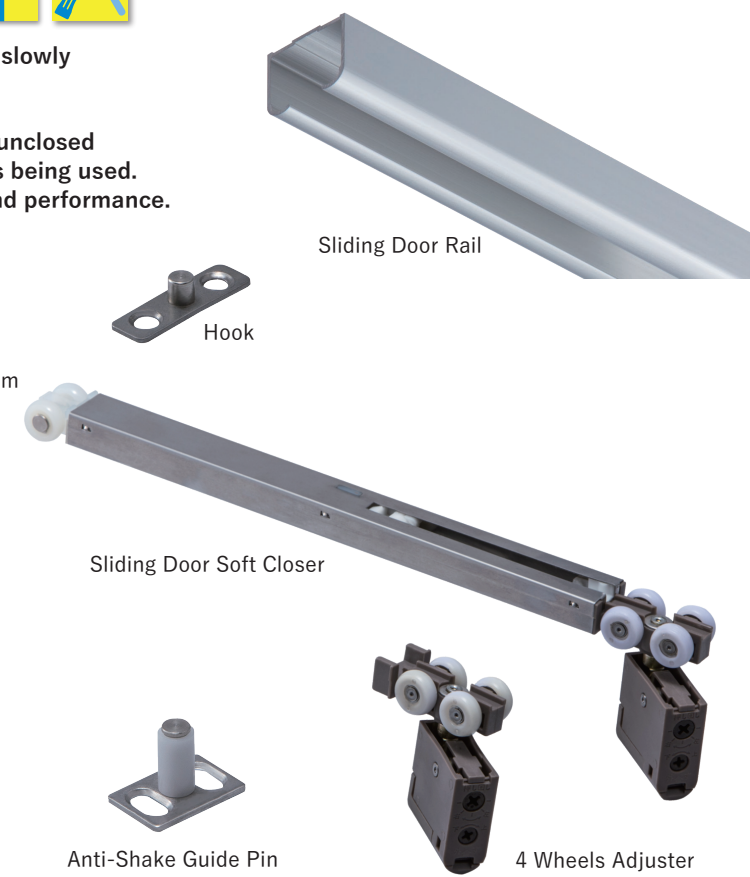
Sliding Door Soft Closer set	
Product No.	Rail Length(mm)
312-031	1,820
312-032	2,730
312-033	3,640

Set contents:
Sliding Door Soft Closer 1pcs, Hook 1pcs
4 Wheels Adjuster 2pcs, Sliding Door Rail 1pcs
Anti-Shake Guide Pin 1pcs
Screw included:
<Hook>
3 × 16 Flat head tapping screw 2pcs
<4 Wheels Adjuster>
3.5 × 12 Flat head tapping screw 1pcs
3.5 × 20 Pan head tapping screw 2pcs
<Sliding Door Rail>
3.5 × 45 Flat head tapping screw
(The number depends on the rail length.)
<Anti-Shake Guide Pin>
3.5 × 25 Flat head tapping screw 2pcs

※ Please contact us if you need purchasing both sides type closer for a sliding door or just a closer only.



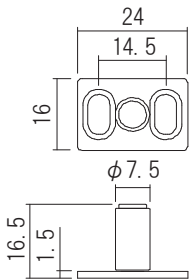
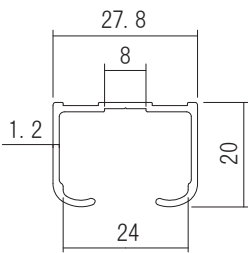
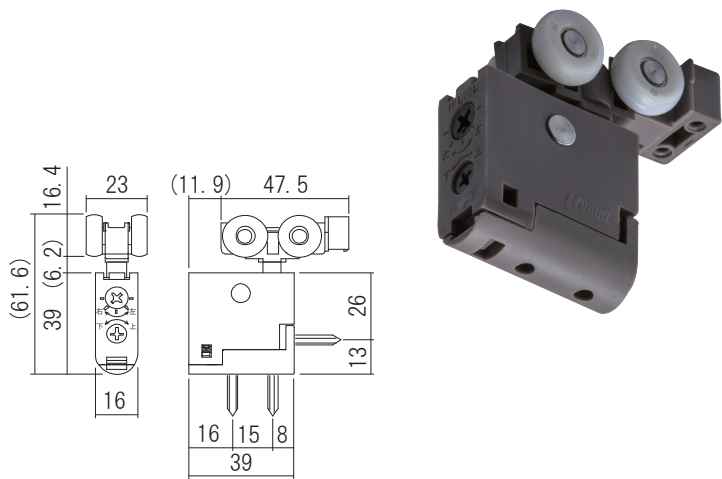
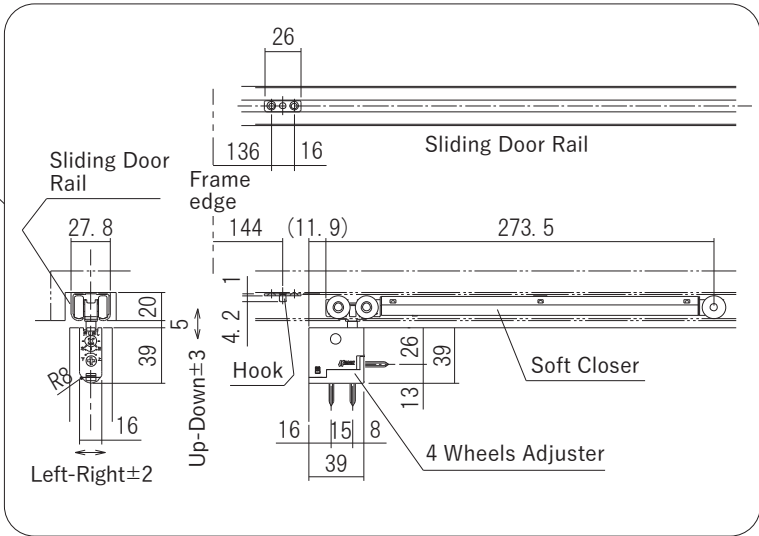
Drawing for Installation



4 Wheels Adjuster・Rail set

4 Wheels Adjuster・Rail set	
Product No.	Rail Length(mm)
312-034	1,820
312-035	2,730
312-036	3,640

Set contents:
4 Wheels Adjuster 2pcs
Sliding Door Rail 1pcs
Anti-Shake Guide Pin 1pcs



4 Wheels Adjuster

An optimal barrier free without the need of a lower rail. It has good runnability and excellent durability. Install the cap, then this wheel can be installed with only one touch.

Material:Resin, Steel
Load Capacity:294N(30kg)
Installation Range:
Up-Down ± 3mm, Left-Right ± 2mm

4 Wheels Adjuster	
Product No.	Finish/Color
320-021	Amber

※ 1pc price.
Screw included:
3.5 × 12 Flat head tapping screw 1pcs
3.5 × 20 Pan head tapping screw 2pcs

Sliding Door Rail

Material:Aluminum
Load Capacity:294N(30kg)

Sliding Door Rail		
Product No.	Length(mm)	Finish/Color
310-512	1,820	Silver
310-522	2,730	
310-532	3,640	

Screw included:
3.5 × 45 Flat head tapping screw
(The number depends on the rail length.)

Anti-Shake Guide Pin

Material:Stainless, Resin
Load Capacity:294N(30kg)

Anti-Shake Guide Pin	
Product No.	Finish/Color
320-084	Raw Material

Screw included:
3.5 × 25 Flat head tapping screw 2pcs

Heavy Duty Sliding Door Soft Closer



This Soft Closer can be installed on the outside of a Sliding door. Prevent door from rebounding and reduce collision noise.

Easy to install on an existing Sliding door.※1

Appropriate door weight is 60 kg.

It is possible to be embedded in the door.

※1. Some types of doors cannot be installed.

Material:Stainless, Resin
Load Capacity:588N(60kg)

Heavy Duty Sliding Door Soft Closer		
Product No.	Door Weight	Finish/Color
312-061	294N (30kg)	Gold Painting
312-062		Silver Painting
312-063		Gray
312-064		Brown
312-065	588N (60kg)	Gold Painting
312-066		Silver Painting
312-067		Gray
312-068		Brown

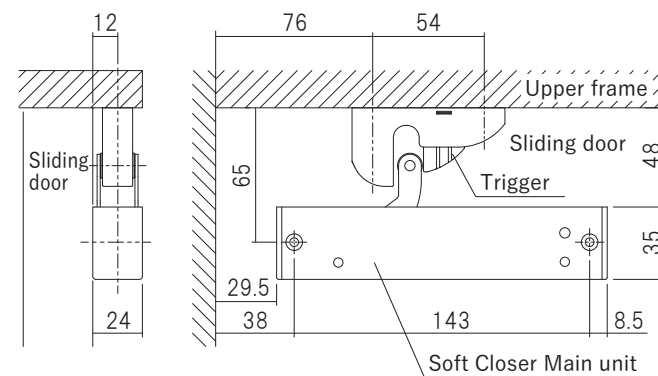
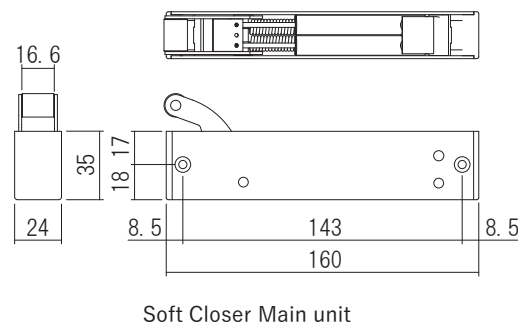
Screw included:

〈Main unit〉

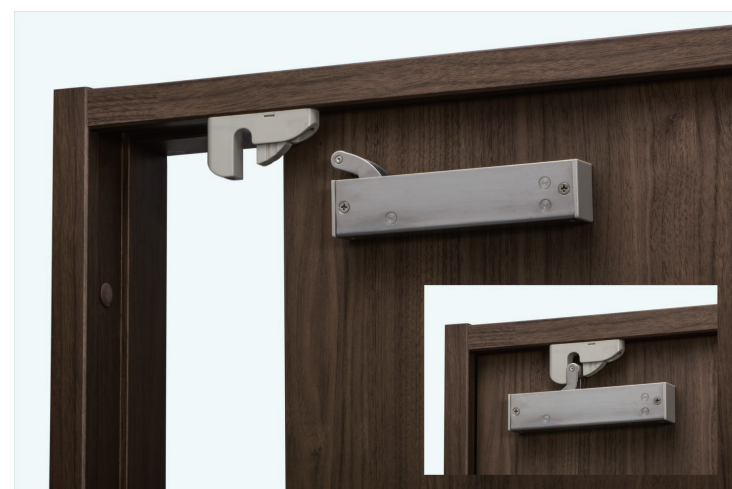
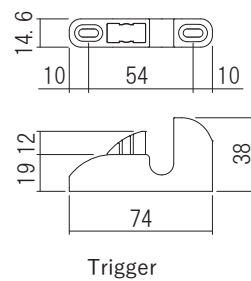
3.5 × 40 Flat head tapping screw 2pcs

〈Trigger〉

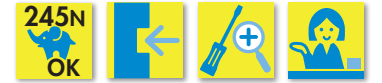
3.5 × 25 Binding head tapping screw 2pcs



Drawing for Installation



Soft Closer (Air system)



This door closer will close the door silently by slowing the speed in the middle even when the door is closed uncarefully. The soft closer has an air damper system that will close the door with a natural brake. Prevents the door from being unclosed and can save electricity when the air conditioner is working. It also can arrange the closing speed.

Material:Stainless, Resin
Load Capacity:245N(25kg)

Soft Closer (Air system)	
Product No.	Finish/Color
312-012	Raw Material

Set contents:

Soft closer 1pcs, Hook 2pcs

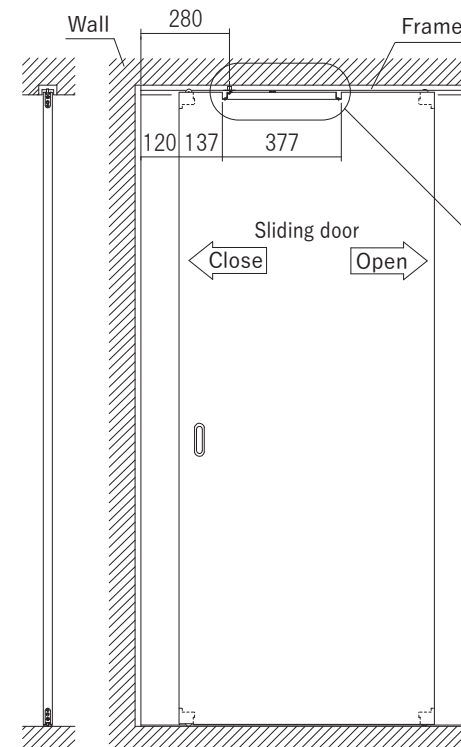
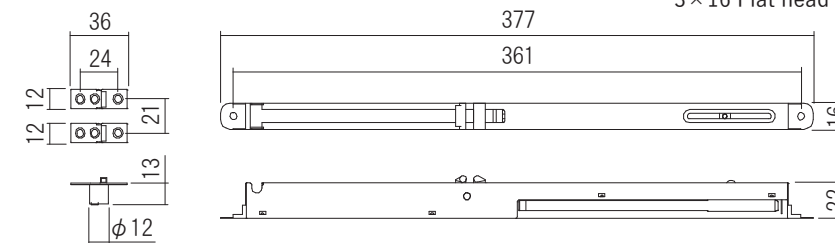
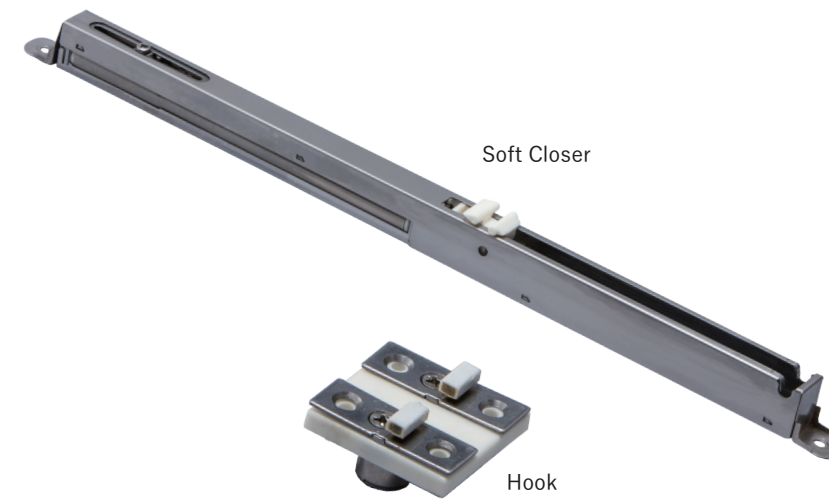
Screw included:

〈Main unit〉

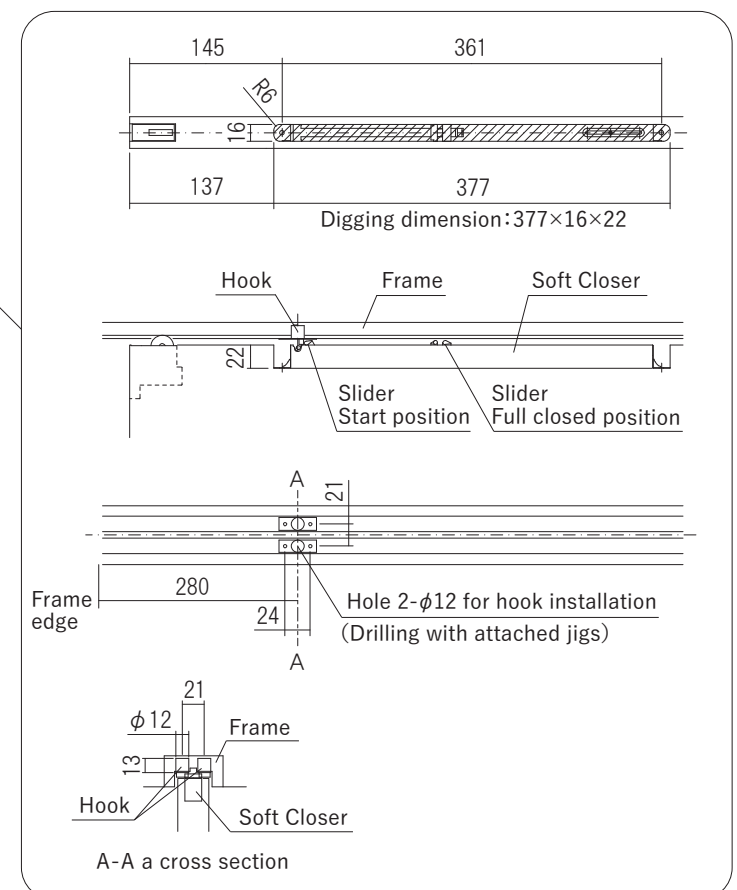
3.5 × 20 Truss head tapping screw 2pcs

〈Hook〉

3 × 16 Flat head tapping screw 4pcs



Drawing for Installation



KT Adjusting Roller Door



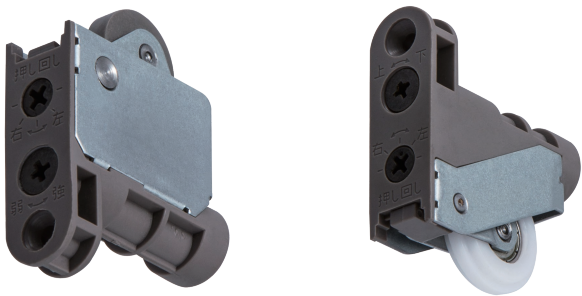
In addition to the up-down Adjusting, this door roller can adjust frictions according to the door shape and frame shape changed.

Material: Resin, Steel
Load Capacity: 294N(30kg)
Installation Range: Up-Down ± 3mm, Left-Right ± 2mm
Appropriate Rail: Upper_Lintel Rail, Lower_T Rail

KT Adjusting Roller Door

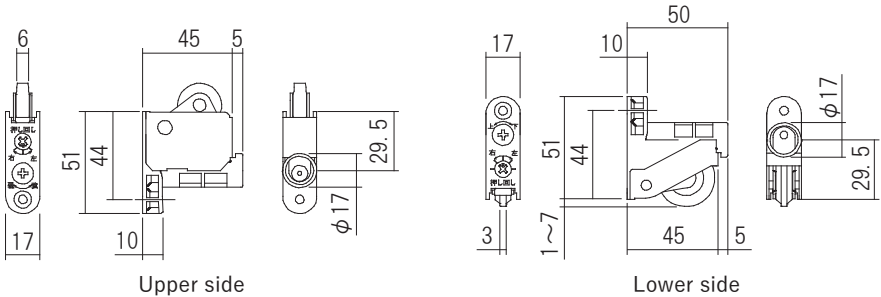
Product No.	Specification	Finish/Color
301-332	Upper side	Amber
301-342	Lower side	

※ 1 pc price.
Screw included:
4 × 30 Flat head tapping screw 1pcs



Upper side

Lower side



Upper side

Lower side

Lintel Rail

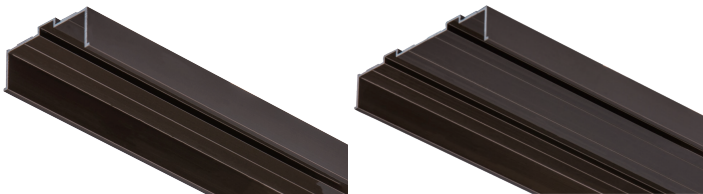


Material: Aluminum
Finish/Color: Amber

Lintel Rail

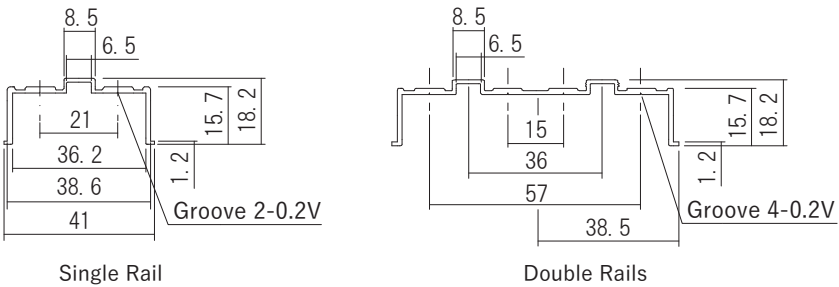
Product No.	Specification	Length (mm)
310-312A	Single Rail	1,820
310-312B		2,730
310-312C		3,640
310-412A	Double Rails	1,820
310-412B		2,730
310-412C		3,640

Screw included:
3.5 × 12 Flat head tapping screw
(The number depends on the rail length.)



Single Rail

Double Rails



Single Rail

Double Rails

T Floor Rail



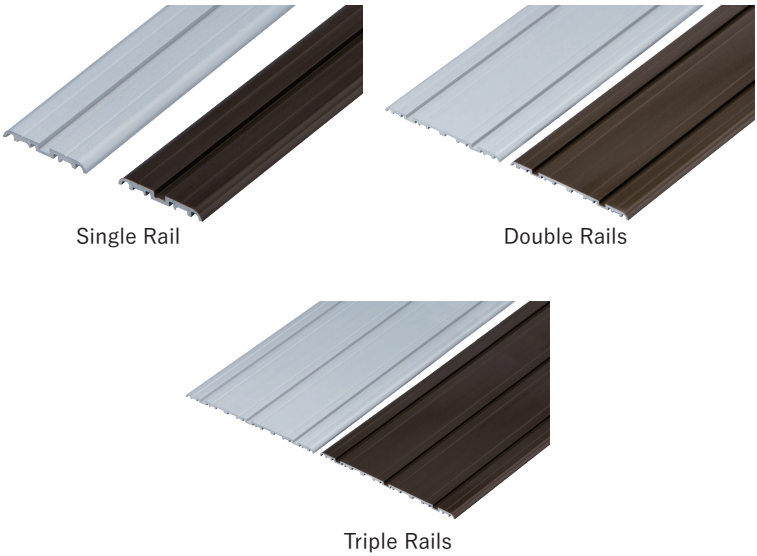
This Rail used for lower KT Adjusting Roller. It only has 3mm height and it is barrier free.

Material: Aluminum
Load Capacity: 294N(30kg)

T Floor Rail

Product No.	Amber	Silver	Specification	Length (mm)
310-361A	310-364A		Single Rail	1,820
310-361B	310-364B			2,730
310-361C	310-364C			3,640
310-362A	310-365A		Double Rails	1,820
310-362B	310-365B			2,730
310-362C	310-365C			3,640
310-363A	310-366A		Triple Rails	1,820
310-363B	310-366B			2,730
310-363C	310-366C			3,640

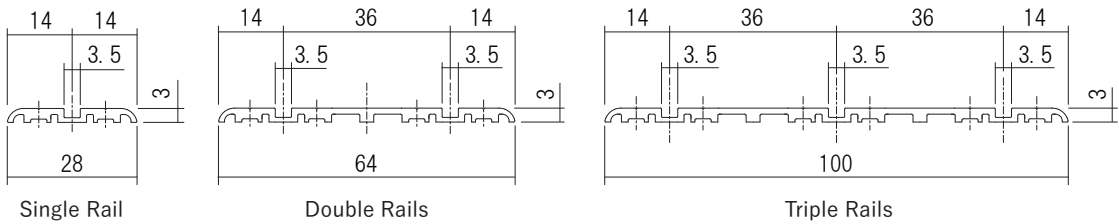
Screw included:
2.7 × 16 Flat head wood screw
(The number depends on the rail length.)



Single Rail

Double Rails

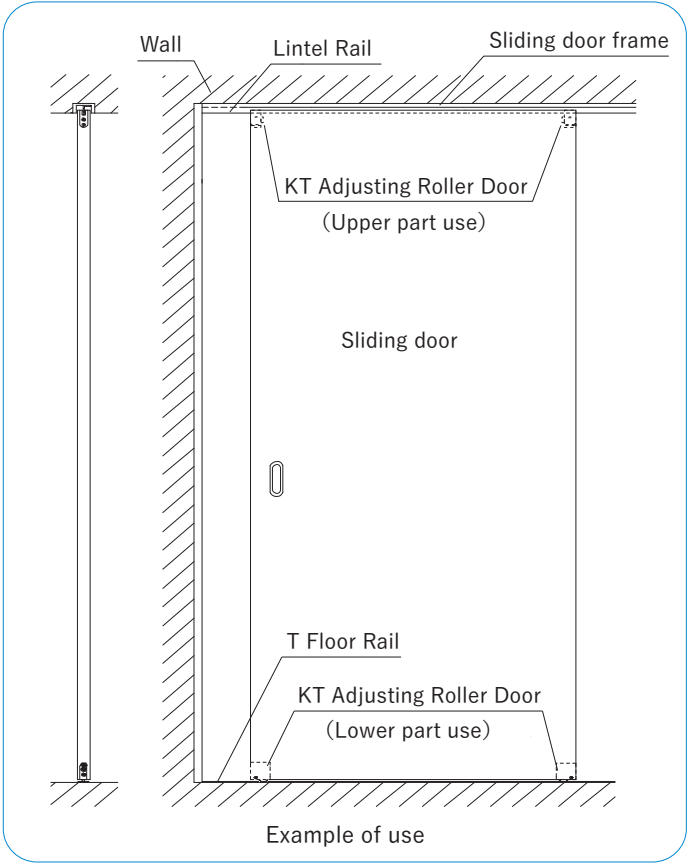
Triple Rails



Single Rail

Double Rails

Triple Rails



Outset Sliding Door Parts

You can easily install a Sliding door to the part you removed a hinged door.

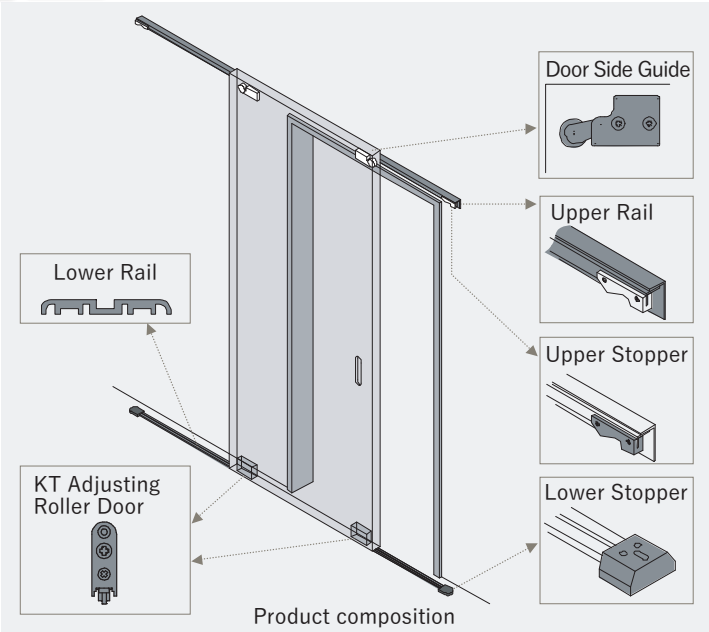
Load Capacity:294N(30kg)

Outset Sliding Door Parts

Product No.	Upper Rail (mm)	Lower Rail (mm)	Lower Rail Color
330-001	1,388	1,392	Amber
330-002	1,570	1,574	
330-003	1,628	1,632	
330-001S	1,388	1,392	Silver
330-002S	1,570	1,574	
330-003S	1,628	1,632	

Set contents:

Upper Rail 1pcs, Lower Rail 1 pcs
KT Adjusting Roller Door (For lower side) 2pcs
Door Side Guide 2pcs
Upper Stopper 2pcs
Lower Stopper 2pcs



Upper Rail (Outset)

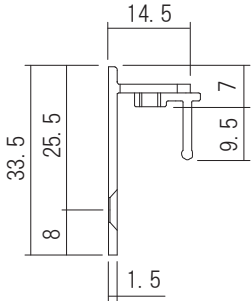
Material:Aluminium
Load Capacity:294N(30kg)

Upper Rail (Outset)

Product No.	Length(mm)	Finish/Color
330-051	1,388	White
330-052	1,570	
330-053	1,628	

Screw included:

3.5×30 Flat head tapping screw
(The number depends on the rail length.)



Lower Rail (T Floor Rail)

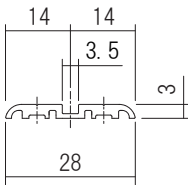
Material:Aluminium
Load Capacity:294N(30kg)

Lower Rail (T Floor Rail)

Product No.	Amber	Silver	Length(mm)
330-054	330-057		1,392
330-055	330-058		1,574
330-056	330-059		1,632

Screw included:

2.7×16 Flat head wood screw
(The number depends on the rail length.)



KT Adjusting Roller Door

Material:Resin, Steel
Load Capacity:294N(30kg)
Installation Range:Up-Down ± 3mm, Left-Right ± 2mm

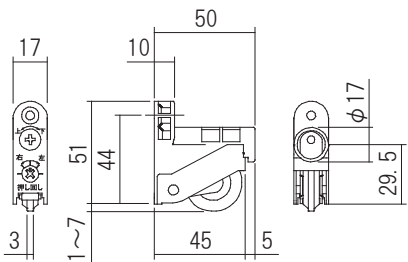
KT Adjusting Roller Door(Lower side)

Product No.	Finish/Color
301-342-2	Amber

※ 2pcs price.

Screw included:

4×30 Flat head tapping screw 2pcs



Door Side Guide

Material:Resin

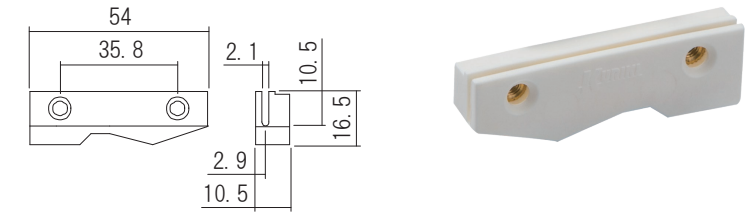
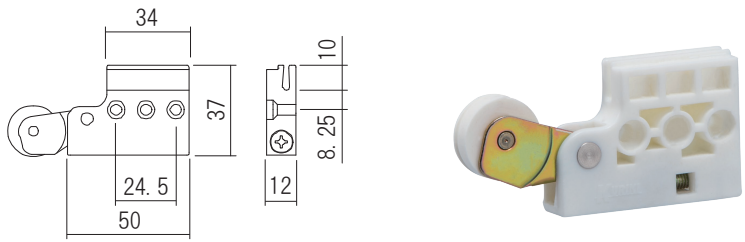
Door Side Guide

Product No.	Finish/Color
330-060	White

※ 2pcs price.

Screw included:

4×25 Flat head tapping screw 6pcs



Upper Stopper

Material:Resin

Upper Stopper

Product No.	Finish/Color
330-061	White

※ 2pcs price.

Screw included:

M4×10 Flat head machine screw 4pcs



Outset Lower Stopper

Material:Resin

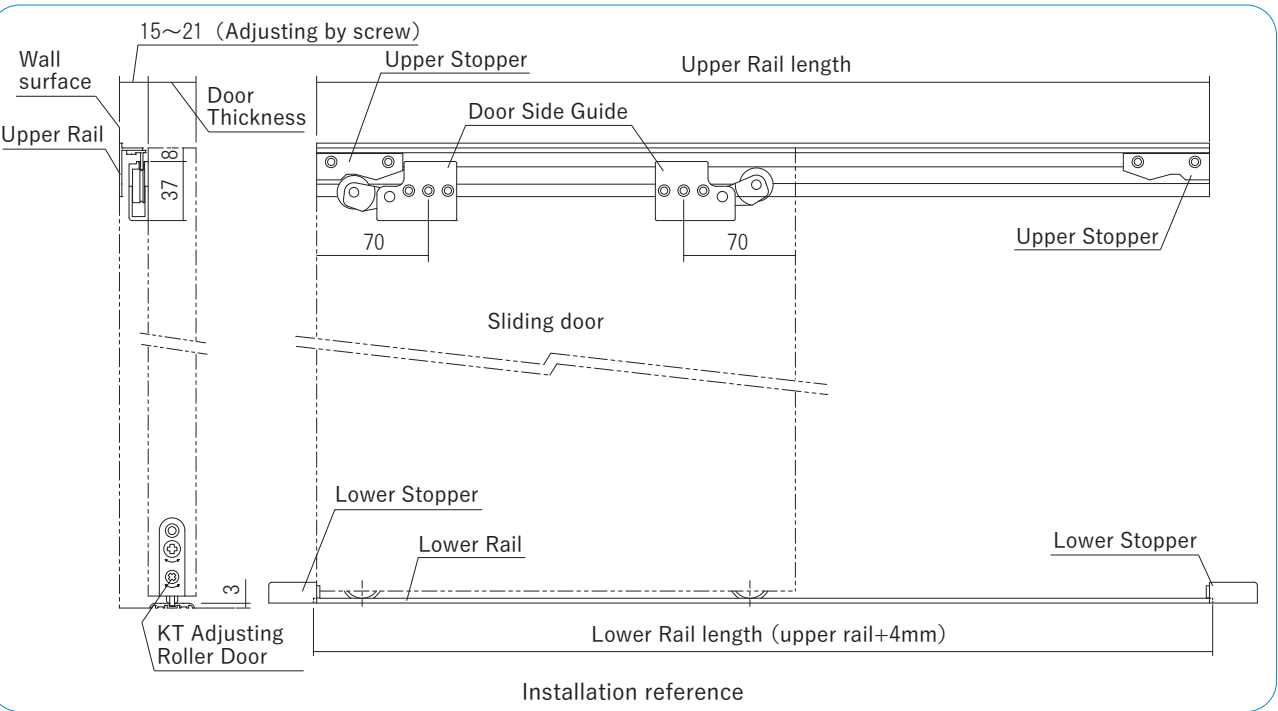
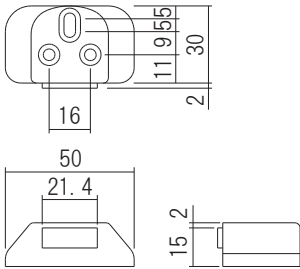
Outset Lower Stopper

Product No.	Finish/Color
330-064	Black

※ 2pcs price.

Screw included:

4×30 Flat head tapping screw 6pcs

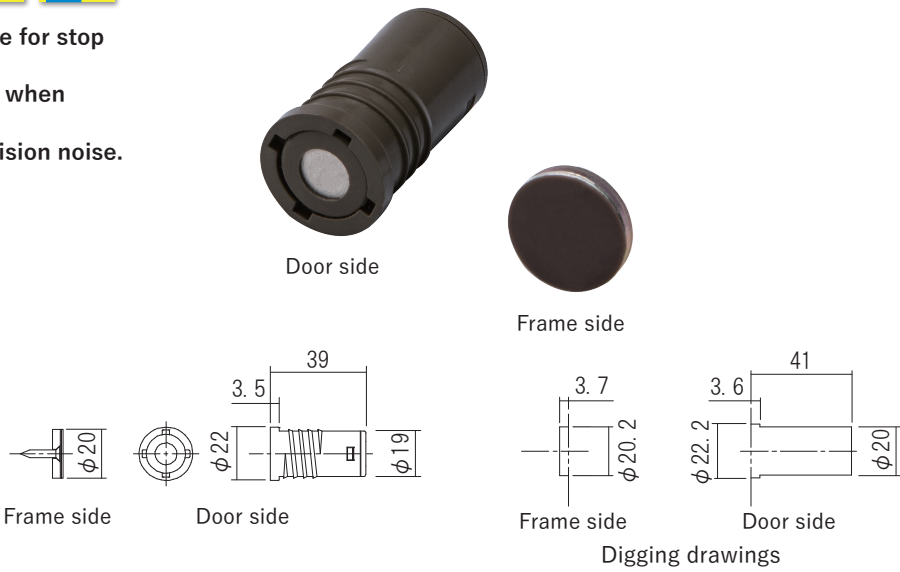


Magnet Catcher

This Magnet Catcher is very effective for stop loosening of a Sliding door.
It can prevent door from rebounding when closing a door carelessly.
It is also designed to reduce the collision noise.

Material: Resin, Steel, Magnet
Load Capacity: 98~343N(10~35kg)
Door Thickness: More than 28mm

Magnet Catcher	
Product No.	Finish/Color
230-022	Amber
Screw included:	
3 × 16 Flat head tapping screw 1pcs	



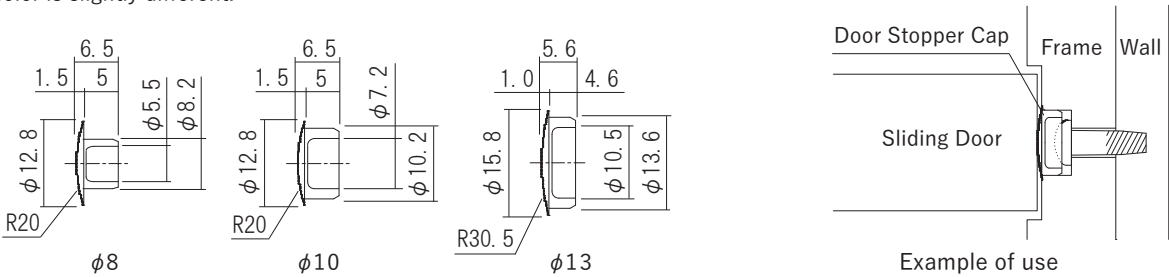
Door Stopper Cap

The cap which made of elastomer Resin with good cushioning and durability.
We provide with a lot of color variations.

Material: Resin

Door Stopper Cap			
Product No.	Installation diameter (mm)	Finish/Color	
251-001	φ 8	Birch	K
251-002		Natural	N
251-003		Cherry	C
251-004		Brown	B
251-005		Dark	D
251-009	φ 10	White	W
251-010		Peach	Y
251-011		Birch	K
251-012		Natural	N
251-013		Cherry	C
251-014	φ 13 ※1	Brown	B
251-015		Dark	D
251-019		White	W
251-020		Peach	Y
251-021		Birch	K
251-022	φ 13 ※1	Natural	N
251-023		Cherry	C
251-024		Brown	B
251-025		Dark	D
251-029		White	W
251-030		Peach	Y

※1 φ 13 color is slightly different.



F2 Adjuster Guide

This guide is used with a upper rail of a normal sliding door.

Material: Resin
Load Capacity: 294N(30kg)
Installation Range: Left-Right ± 2mm

F2 Adjuster Guide	
Product No.	Finish/Color
305-012	Amber
※ 1pc price.	
Screw included:	
4 × 45 Flat head tapping screw 1pcs	

Upper Rail

Material: Aluminium
Load Capacity: 294N(30kg)
Finish/Color: Amber

Upper Rail		
Product No.	Specification	Length(mm)
310-012	One side	1,820
310-022		2,730
310-032		3,640
310-042	Both side	1,820
310-052		2,730
310-062		3,640

Screw included:
3.5 × 25 Flat head tapping screw
(The number depends on the rail length.)

PA Adjusting Door Roller

Material: Resin
Load Capacity: 294N(30kg)
Installation Range:
Up-Down ± 3mm, Left-Right ± 2mm
Appropriate rail: V Rail

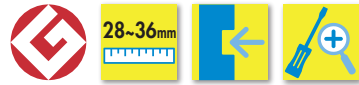
PA Adjusting Door Roller	
Product No.	Finish/Color
301-432	Amber
※ 1pc price.	
Screw included:	
4 × 30 Pan head tapping screw 1pcs	

V Rail

Material: Aluminium
Load Capacity: 294N(30kg)
Finish/Color: Amber

V Rail	
Product No.	Length(mm)
311-012	1,820
311-022	2,730
311-032	3,640

TS Hook Lock



This product won the 2011 Good Design Award.

This Hook lock with a clear cut design.

There are 5 relaxing colors, including Black Gold.

Material: $\langle \text{Pull} \rangle$ ZDC

〈Lock Case, Strike〉Stainless, Steel

Door Thickness:28~36mm

Strike Installation Range: Up-Down $\pm 5\text{mm}$, Depth 2.5mm

TS Hook Lock			
Product No.		Key	
No trigger	With trigger	Specification	Finish/Color
224-701	224-701 T	Privacy lock	Gloss Pearl Chrome
224-702	224-702 T		Black Gold
224-703	224-703 T		Satin Silver
224-704	224-704 T		Black Silver
224-705	224-705 T		Matte Black Painting
224-711	224-711T	Indicator lock	Gloss Pearl Chrome
224-712	224-712T		Black Gold
224-713	224-713T		Satin Silver
224-714	224-714T		Black Silver
224-715	224-715T		Matte Black Painting
224-721	224-721T	Cylinder lock ※1	Gloss Pearl Chrome
224-722	224-722T		Black Gold
224-723	224-723T		Satin Silver
224-724	224-724T		Black Silver
224-716	224-716T		Matte Black Painting
224-725	224-725T	Cylinder lock ※1・※2	Gloss Pearl Chrome
224-726	224-726T		Black Gold
224-727	224-727T		Satin Silver
224-728	224-728T		Black Silver
224-717	224-717T		Matte Black Painting
224-748	224-748T	Lock Case(Front round type)	
224-749	224-749T	Lock Case(Front square type)	
224-599	224-580	Adjustment Strike(Front round type)	
224-598	900-022	Adjustment Strike(Front square type)	
224-750	224-750	Spare key	

 Half indicator. (It only show red color when it locked.)

※1 With 2 keys.

※2 This cylinder doesn't protrude.

(Only for 33~36mm door thickness.)

※ There are square type on the front of the Lock Case and the Strike.

※ The finish of the front of the Lock Case and the Strike are hair line.

Screw included:

⟨Pull⟩

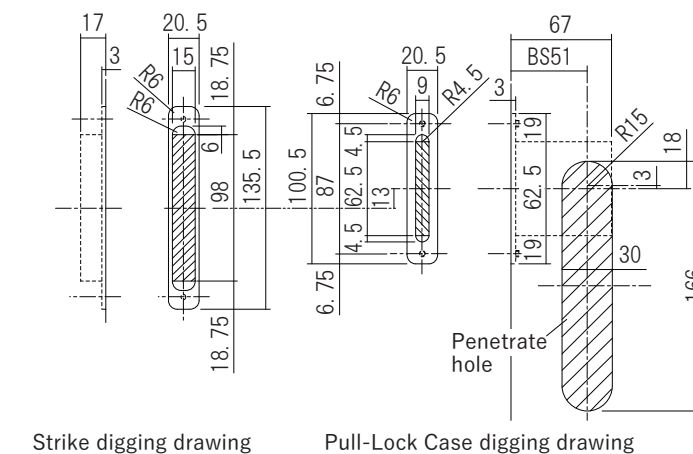
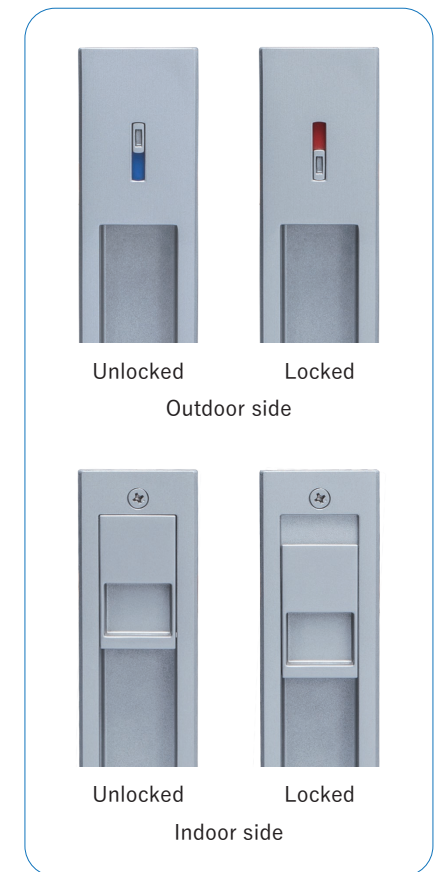
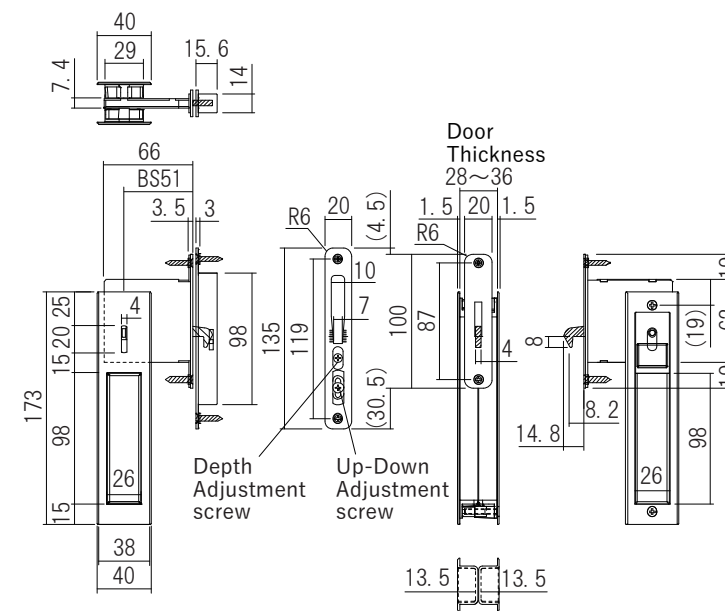
M4×25 Flat head machine screw(D7) 2pcs

〈Lock Case〉

3.5 × 20 Flat head tapping screw(D7) 2pcs

〈Strike〉

3.5 × 20 Flat head tapping screw(D7) 2pcs





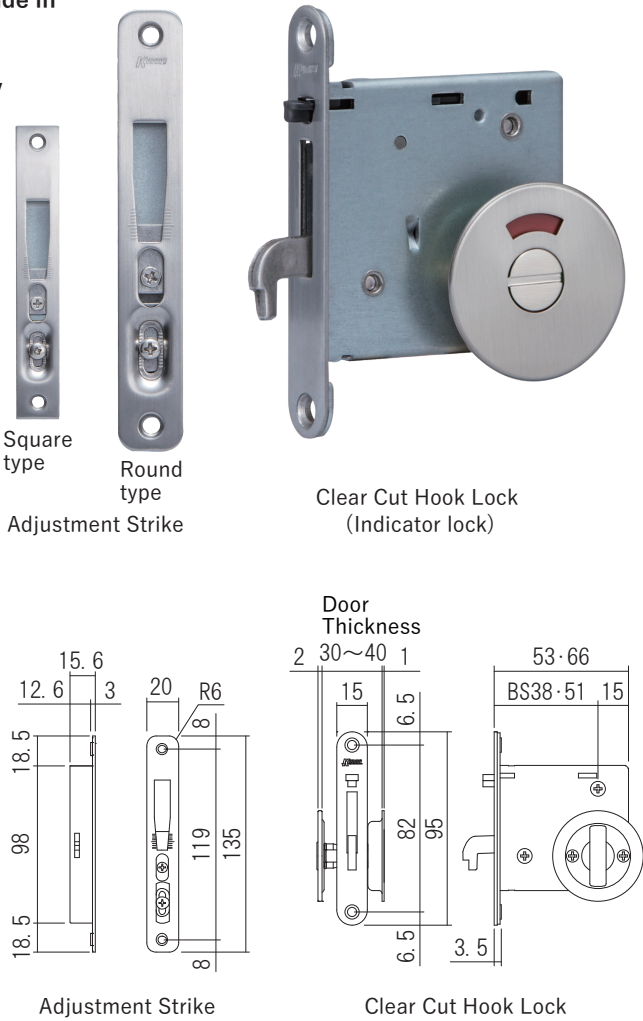
Clear Cut Hook Lock (Round)

It is easy to lock and unlock the door just by turning a thumb turn.
Privacy lock · Indicator lock can be unlocked from the outside in an emergency situation.
There are 100 patterns of keys for cylinder type.
UD lever specification has an universal design with a highly strengthened thumb turn and we provide an easy to see indicator color for someone has a color-vision deficiency.

Material: <Rose>Aluminium
<Lever>ZDC
<Lock Case, Strike>Stainless, Steel
Door Thickness:30~40mm
Strike Installation Range:Up-Down±5mm, Depth 2.5mm

Clear Cut Hook Lock (Round)				
Product No.		Key Specification		
BS38	BS51	Inside	Outside	Finish/Color
224-301	224-521	Standard type	Privacy lock	Satin Gold
224-302	224-522			Satin Silver
224-303	224-523			Gloss Gold
224-304	224-524			Chrome Plating
224-305	224-525			Silver Painting
224-332	224-526			Black Painting
224-306	224-531	Standard type	Indicator lock	Satin Gold
224-307	224-532			Satin Silver
224-308	224-533			Gloss Gold
224-309	224-534			Chrome Plating
224-310	224-535			Silver Painting
224-331	224-536			Black Painting
224-311	224-541	Standard type	Cylinder lock ※1	Satin Gold
224-312	224-542			Satin Silver
224-315	224-545			Silver Painting
224-333	224-546			Black Painting
224-316	224-551	Lever type	Privacy lock	Satin Gold
224-317	224-552			Satin Silver
224-318	224-553			Gloss Gold
224-319	224-554			Chrome Plating
224-320	224-555			Silver Painting
224-321	224-561	Lever type	Indicator lock	Satin Gold
224-322	224-562			Satin Silver
224-323	224-563			Gloss Gold
224-324	224-564			Chrome Plating
224-325	224-565			Silver Painting
224-326	224-571	Lever type	Cylinder lock ※1	Satin Gold
224-327	224-572			Satin Silver
224-330	224-575			Silver Painting
900-031	900-001	UD Lever type	Indicator lock	Silver Painting
900-032	900-002			Gold Painting
900-033	900-003			Satin Silver
900-034	900-004			Satin Gold
900-035	900-011	UD Lever type	Cylinder lock ※1	Silver Painting
900-036	900-012			Gold Painting
900-037	900-013			Satin Silver
900-038	900-014			Satin Gold
224-586	224-579	Lock Case (Front round type)		
224-580	224-580	Adjustment Strike (Front round type)		
244-587	900-021	Lock Case (Front square type)		
900-022	900-022	Adjustment Strike (Front square type)		
224-581	224-581	Spare key (No.000)		
224-582	224-582	Spare key (No.B000)		
224-583	224-583	Spare key (No.D000)		

Screw included:
<Rose>
Refer to the Rose fixing screw / Spindle specification table.
<Lock case>
3.5×20 Flat head tapping screw(D7) 2pcs
<Strike>
3.5×20 Flat head tapping screw(D7) 2pcs



Rose fixing screw / Spindle specification table				
Indicator, Privaci lock				
Door thickness (mm)		30~34	35~39	40
Rose fixing screw	Standard, Lever type	M4 × 16		M4 × 25
	UD Lever type	M4 × 30		
Spindle		L27	L32	L37.5
Cylinder lock				
Door thickness (mm)		30~35	36~39	40
Rose fixing screw	Standard, Lever type	M4 × 16		M4 × 25
	UD Lever type	M4 × 30		
Spindle length (only spindle)		L21(17.8)	L27(23.8)	
Two sides Thumb-turn				
Door thickness (mm)		30~34	35~39	40
Rose fixing screw	Standard, Lever type	M4 × 10	M4 × 16	M4 × 20
	UD Lever type	M4 × 25	M4 × 30	
Spindle		L27	L32	L37.5

- ※1 With 2 keys.
- ※ Both sides of the door can use Thumb turn.
- ※ The front of case and strike are standard type, Lever type specification is round shape.
- UD lever specification is square shape. (They are Changeable.)
- ※ The finish of the front of the Lock Case and the Strike is Barrel Polishing.
- ※ Please contact us about the purchasing of master keys.



Indicator lock (Outdoor side)



Standard type (Indoor side)



Privacy lock



Indicator lock



Standard type



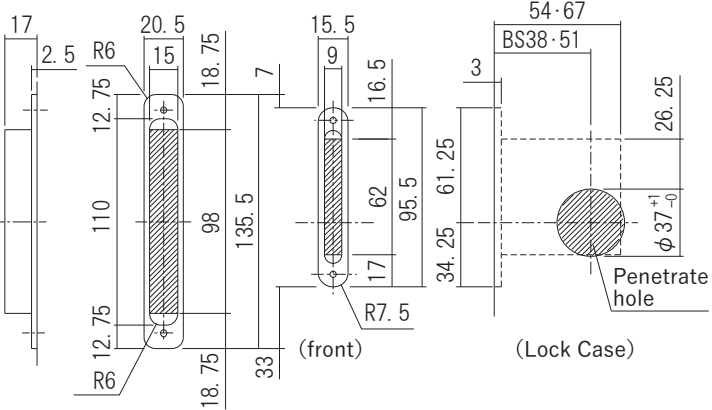
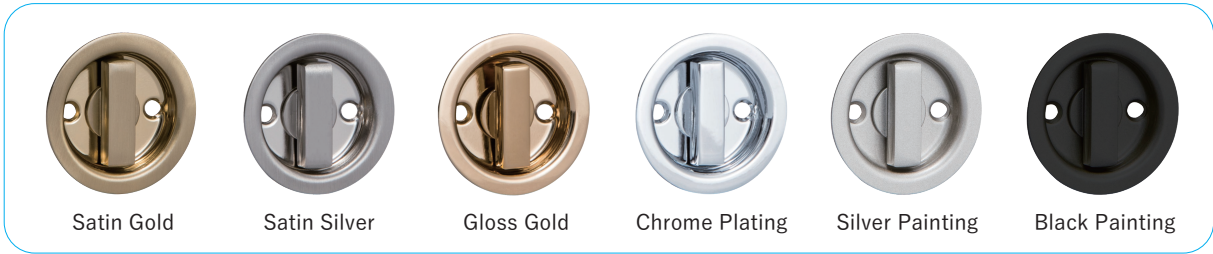
Lever type



Cylinder lock



UD Lever type



Strike digging drawing

Lock Case digging drawing



Clear Cut Hook Lock (Square)



It is easy to lock and unlock the door just by turning a thumb turn.
Privacy lock・Indicator lock can be unlocked from the outside in an emergency situation.
There are 100 patterns of keys for cylinder type.

Material: 〈Rose, Lever〉ZDC
 〈Lock Case, Strike〉Stainless, Steel
Door Thickness: 30~40mm
Strike Installation Range: Up-Down ± 5mm, Depth 2.5mm

Clear Cut Hook Lock (Square)				
Product No.	Key Spesification			
BS38	BS51	Inside	Outside	Finish/Color
224-302K	224-522K	Standard	Privacy	Satin Silver
224-332K	224-526K	type	lock	Black Painting
224-307K	224-532K	Standard	Indicator	Satin Silver
224-331K	224-536K	type	lock	Black Painting
224-312K	224-542K	Standard	Cylinde	Satin Silver
224-333K	224-546K	type	lock ※1	Black Painting
224-586	224-579	Lock Case(Front round type)		
224-580	224-580	Adjustment Strike(Front round type)		
244-587	900-021	Lock Case(Front square type)		
900-022	900-022	Adjustment Strike(Front square type)		
224-581	224-581	Spare key (No.000)		
224-582	224-582	Spare key (No.B000)		
224-583	224-583	Spare key (No.D000)		

Screw included:
〈Rose〉
Refer to the Rose fixing screw / Spindle specification table.
〈Lock case〉
3.5×20 Flat head tapping screw(D7) 2pcs
〈Strike〉
3.5×20 Flat head tapping screw(D7) 2pcs

- ※1 With 2 keys.
- ※ Both sides of the door can use Thumb turn.
- ※ The front of case and strike are standard type, Lever type specification is round shape.
UD lever specification is square shape. (They are Changeable.)
- ※ The finish of the front of the Lock Case and the Strike is Barrel Polishing.
- ※ Please contact us about the purchasing of master keys.

Rose fixing screw / Spindle specification table

Indicator, Privaci lock			
Door thickness (mm)	30~34	35~39	40
Rose fixing screw	M4 × 16		M4 × 25
Spindle	L27	L32	L37.5

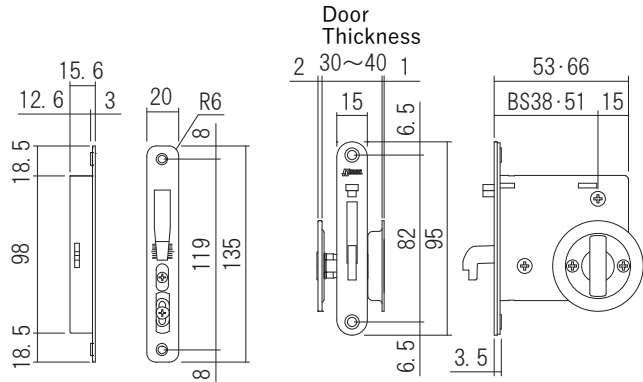
Cylinder lock			
Door thickness (mm)	30~35	36~39	40
Rose fixing screw	M4 × 16		M4 × 25
Spindle length (only spindle)	L21(17.8)	L27(23.8)	

Two sides Thumb-turn			
Door thickness (mm)	30~34	35~39	40
Rose fixing screw	M4 × 10	M4 × 16	M4 × 20
Spindle	L27	L32	L37.5



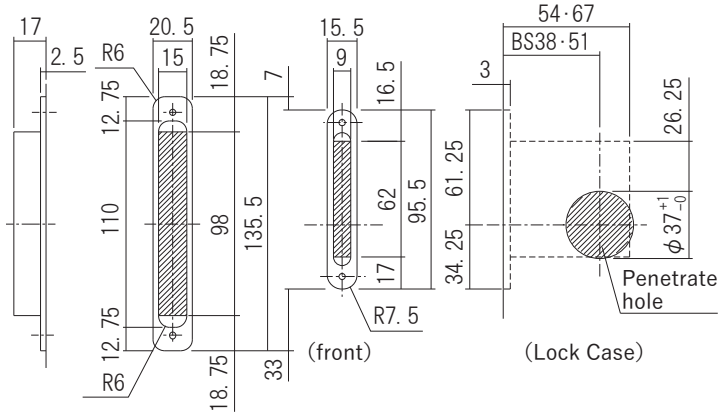
Square type
Round type
Adjustment Strike

Clear Cut Hook Lock
(Indicator lock)



Adjustment Strike

Clear Cut Hook Lock



Strike digging drawing

Lock Case digging drawing



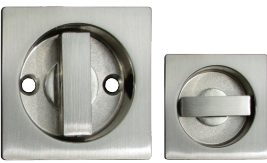
Indicator lock (Outdoor side)



Standard type (Indoor side)



Satin Silver
Black Painting
Privacy lock



Satin Silver



Satin Silver
Black Painting
Indicator lock



Black Painting



Satin Silver
Black Painting
Cylinder lock



NS Automatic Hook Lock

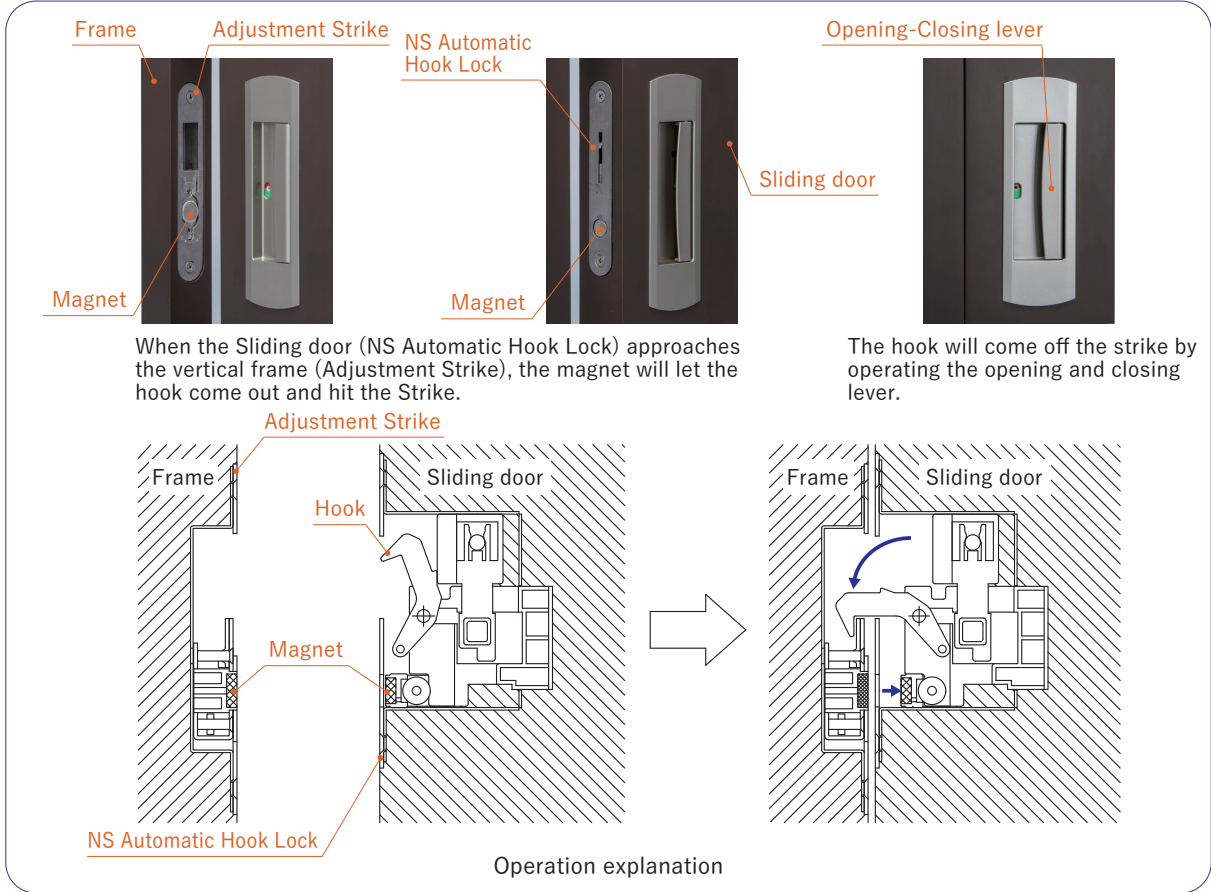
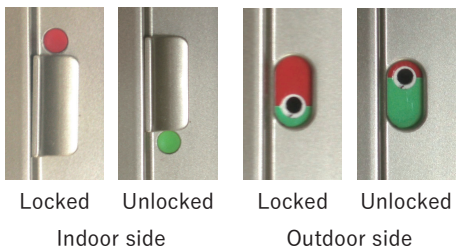
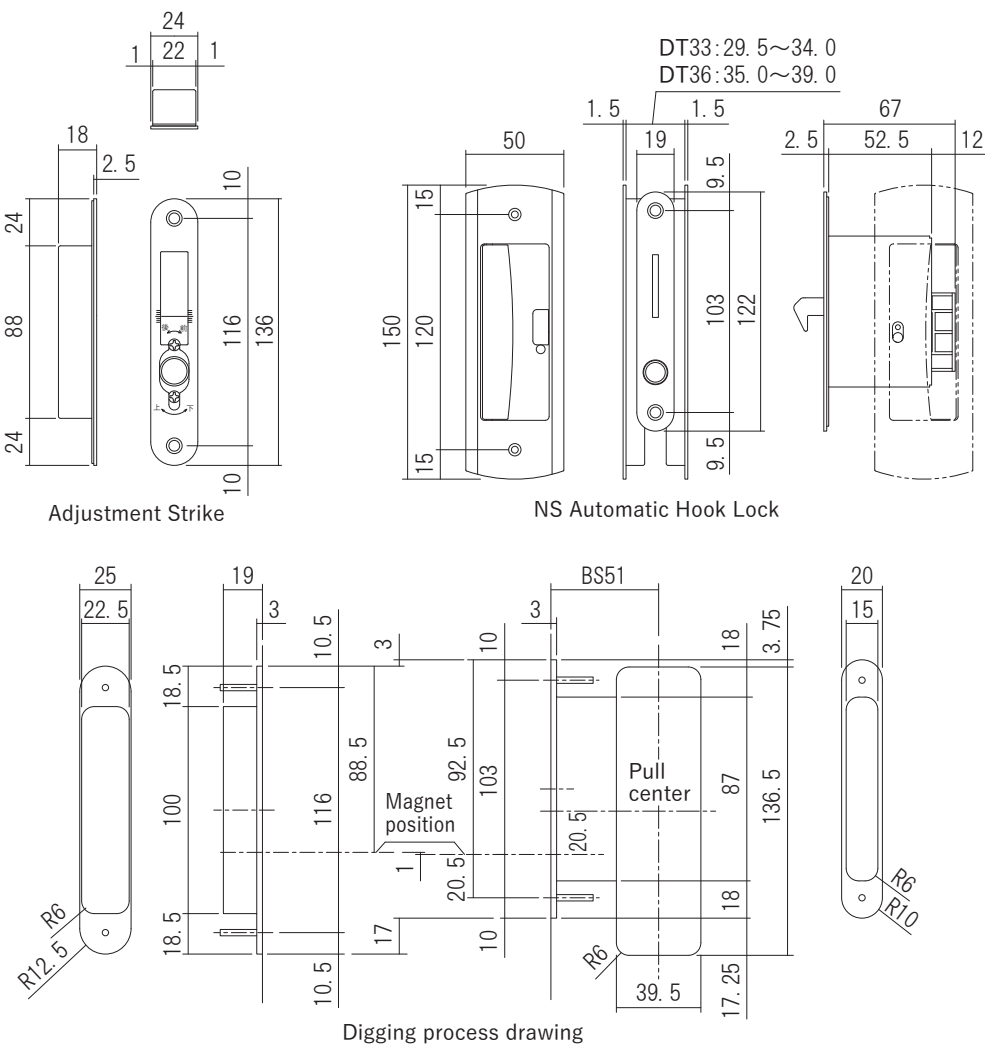


When closing a Sliding door, the hook will come out automatically and lock the door by the magnetic repulsive force. It will prevent the door unclosed and rebound. The Pull can be rearranged left and right. It is available for only pull without lock.

Material: <Pull>Resin
<Lock Case, Strike>Stainless, Steel
Door Thickness:DT33_29.5~34.0mm, DT36_35.0~39.0mm
Strike Installation Range:Up-Down ± 4mm, Depth 4mm

NS Automatic Hook Lock			
Product No.	Key	Specification	Finish/Color
DT33	DT36	Passage lock	Chrome Plating
224-621	224-624		Gold Painting
224-622	224-625		Silver Painting
224-623	224-626	Privacy lock	Chrome Plating
224-631	224-634		Gold Painting
224-632	224-635		Silver Painting
224-633	224-636	Indicator lock	Chrome Plating
224-641	224-644		Gold Painting
224-642	224-645		Silver Painting
224-643	224-646	Puller	Chrome Plating
224-651	224-654		Gold Painting
224-652	224-655		Silver Painting

※ The price is for one inside and one outside set.
※ The finish of the front of the Lock Case and the Strike is Barrel Polishing.
Screw included:
<Pull>
M3×30 Flat head machine screw 2pcs
<Lock Case>
4×20 Flat head tapping screw 2pcs
<Strike>
4×20 Flat head tapping screw 2pcs





Bar Handle

This bar made of natural wood is very easy to hold and give a warm feeling. It is designed for convenience of the elderly and children use. There are 2 kinds of specifications, one side handle and two sides handle.

Material: <Bar>Natural Wood
<Rose>ADC
Door Thickness:27~32mm

Bar Handle		
Product No.	Set content	Finish/Color
863-101LP	Bar Handle	Pale
863-101LD	+ Pull	Dark
863-101WA		White
863-101LL		Rusk
863-101LM		Mocha
863-102LP	Bar Handle	Pale
863-102LD	+ Bar Handle	Dark
863-102WA		White
863-102LL		Rusk
863-102LM		Mocha

Screw included:
M5×16 Flat head machine screw 2pcs



Pale



Pull



Dark



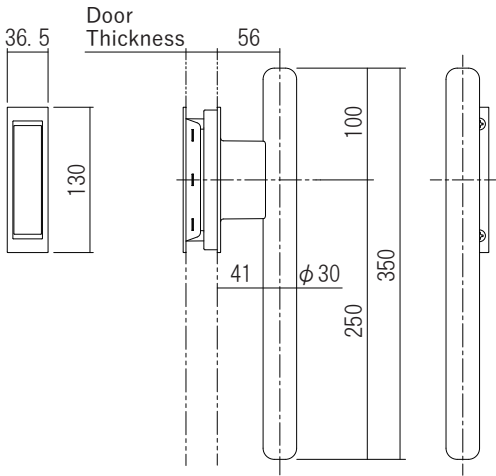
White



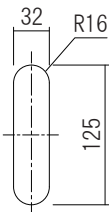
Rusk



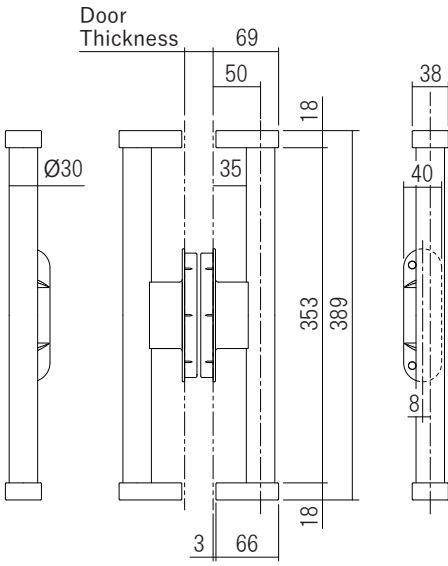
Mocha



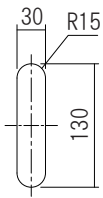
One side bar handle specification



Digging process drawing



Both sides bar pull specification



Digging process drawing



Dark



Middle



Light



Pull



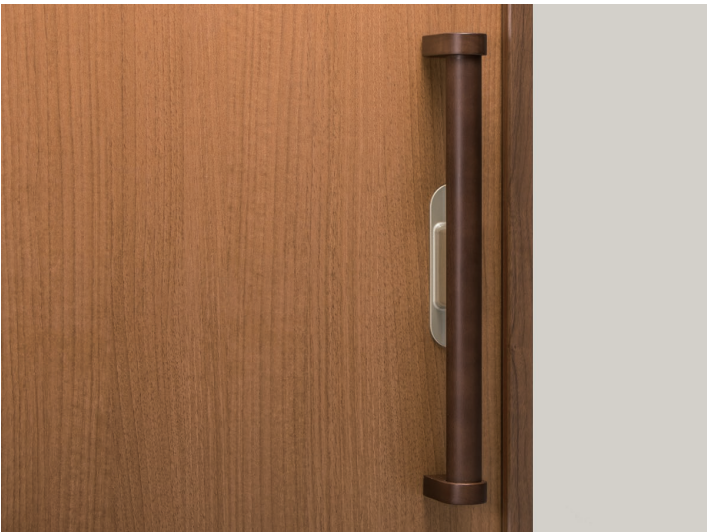
Big Bar Pull

This big bar pull is easy to hold and use even for the elderly and children. Big bar pull has a structure that can prevent catching the bands of bags. Bar is made of natural wood and you can choose from three kinds of colors.

Material: <Bar>Natural Wood
<Rose>ADC
Door Thickness:29~35mm

Big Bar Pull		
Product No.	Set content	Finish/Color
863-001K	Big Bar Pull	Dark
863-001C	+ Pull	Middle
863-001F		Light
863-002K	Big Bar Pull	Dark
863-002C	+ Big Bar Pull	Middle
863-002F		Light

Screw included:
M5×30 Flat head machine screw(D8) 2pcs





Big Handle

It is a smart big handle with $\phi 25$ diameter grip.
You can choose the bar stick from made of natural wood or stainless steel.
It is a big handle for sliding door and is easy for elderly use.

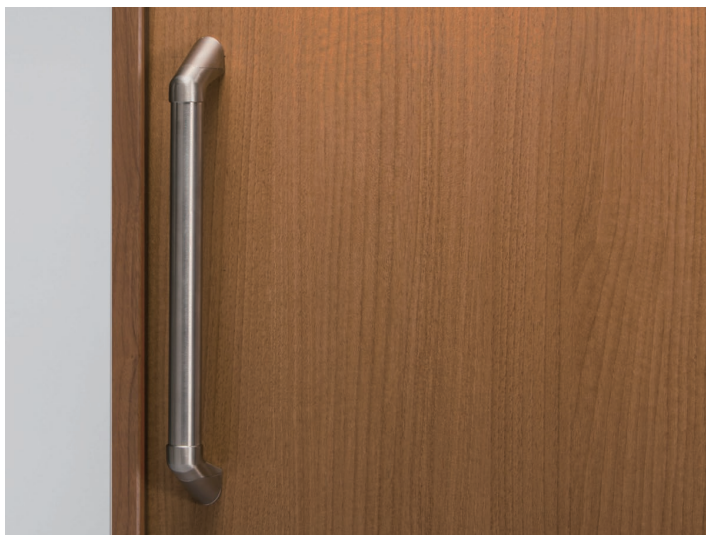
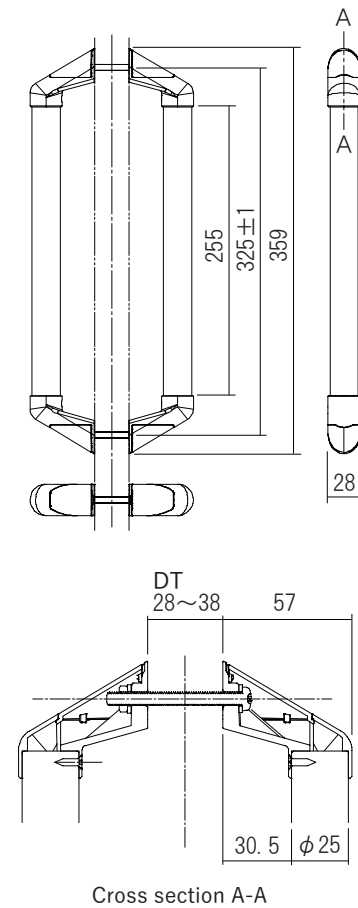
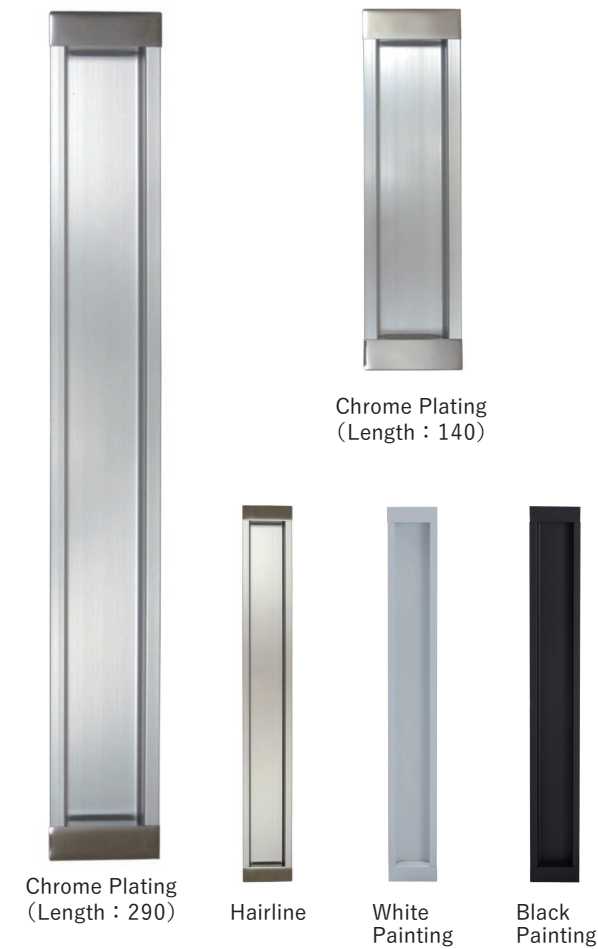
Material:〈Handle〉Stainless, Natural Wood
 〈Bracket〉ZDC
 〈Cover〉Resin
 Door Thickness:28~33mm, 33~38mm

Big Handle				
Product No.	DT (mm)	Handle Material	Finish	Color
861-325S	33~38	Stainless	Hairline	Raw material
861-325K		Natural wood	Urethane Painting	Dark
861-325C		Natural wood	Urethane Painting	Middle
861-325F		Natural wood	Urethane Painting	Light
862-325S	28~33	Stainless	Hairline	Raw material
862-325K		Natural wood	Urethane Painting	Dark
862-325C		Natural wood	Urethane Painting	Middle
862-325F		Natural wood	Urethane Painting	Light

Screw included:
M6×60 or M6×55 Pan head machine screw 2pcs
M6 3 types nuts 2pcs
M6 Flat washer 2pcs
M6 Spring lock washer 2pcs

Bracket finish: 〈Bracket〉Satin Silver
 〈Cover〉Nickel Plating + Clear Coating

※ There is also one side specification.
Please contact us for more information.



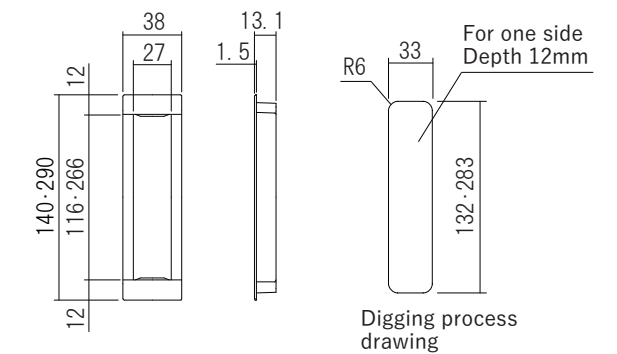
TK One Touch Door Pull

It is a one-touch pull which do not need screws for the installation.
Please install it by using some adhesive.

Material: <End>ZDC
<Bar>Aluminium

TK One Touch Door Pull			
Product No.	Length (mm)	Finish/Color End	Bar
224-614	140	Chrome Plating	Alumite Silver
224-614SW		Hairline	Stain Alumite
224-614WH		White Painting	White Painting
224-614BK		Black Painting	Black Painting
224-629	290	Chrome Plating	Alumite Silver
224-629SW		Hairline	Stain Alumite
224-629WH		White Painting	White Painting
224-629BK		Black Painting	Black Painting

※ 1pc price.

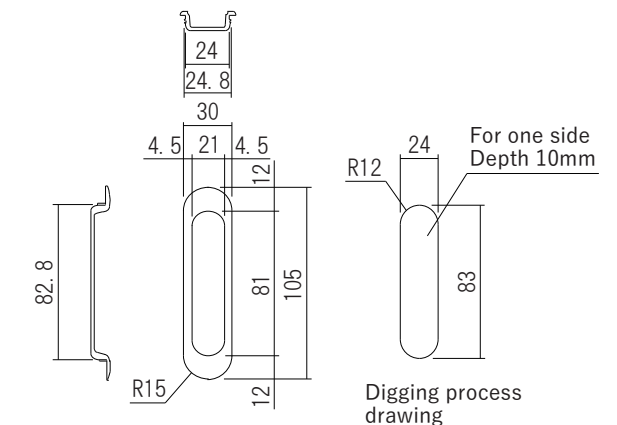


ND Door Pull

ND Pull has a soft round shape and provide a solid impression.
Easy installation type without using a screw.

Material:ZDC

ND Door Pull	
Product No.	Finish/Color
224-615	Satin Gold
224-616	Satin Silver
※ 1pc price.	



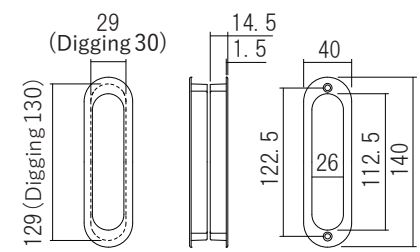


Resin Pull Round & Square Shape

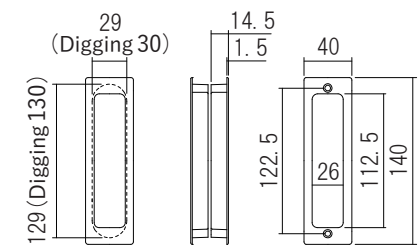
Material: Resin
Door Thickness: 27~34mm

Resin Pull Round & Square Shape		
Product No.		
Round	Square	Finish/Color
222-563	222-583	Pearl Chrome
222-523	222-543	Gold

※ Price for two pieces as one set.
Screw included:
M4×25 Flat head machine screw(D6) 2pcs



Round shape



Square shape



Pearl Chrome



Pearl Chrome



Gold



Gold



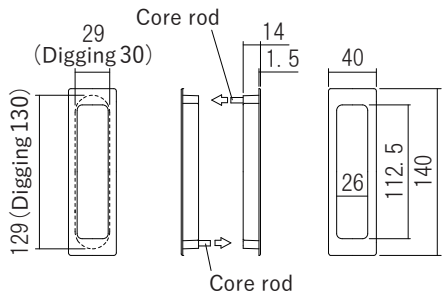
Resin Pull Square One Touch

One touch installation without using screws.
Please install it by using some adhesive.

Material: Resin
Door Thickness: 28~34mm

Resin Pull Square One Touch	
Product No.	
	Finish/Color
222-598	Pearl Chrome
222-599	Gold

※ Price for two pieces as one set.



Pearl Chrome



Gold



One Touch Pull Resin Square

One touch installation without using screws.
Please install it by using some adhesive.

Material: Resin
Door Thickness: 28~36mm

One Touch Pull Resin Square	
Product No.	
	Finish/Color
222-600	Black Silver
222-601	Black Gold
222-602	Mad Black Painting

※ Price for two pieces as one set.



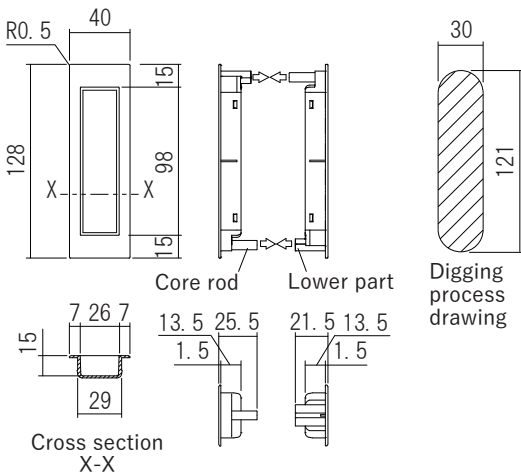
Black Silver



Black Gold



Mad Black Painting





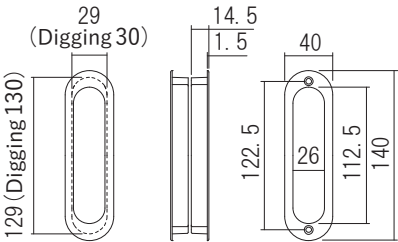
Pull Round & Square Shape

It has a beautiful design, Square and round shapes can be installed with the same digging specification.

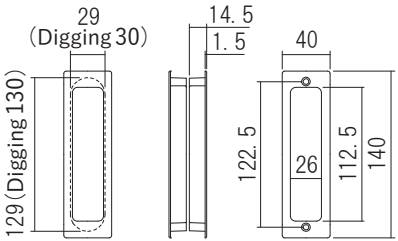
Material: ZDC
Door Thickness: 27~34mm

Pull Round & Square Shape		
Product No.		
Round	Square	Finish/Color
224-812	224-912	Gloss Gold
224-813	224-913	Satin Gold
224-814	224-914	Gold Painting
224-815	224-915	Chrome Plating
224-816	224-916	Satin Silver
224-817	224-917	Silver Painting

※ Price for two pieces as one set.
Screw included:
M4 × 25 Flat head machine screw(D6) 2pcs



Round shape



Square shape



Satin Silver



Satin Gold



Gloss Gold



Gold Painting



Chrome Plating



Silver Painting



Gloss Gold



Gold Painting



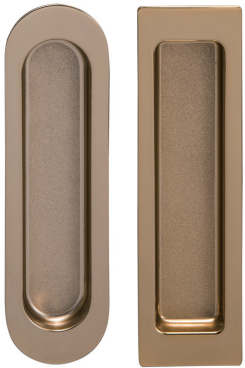
Chrome Plating



Silver Painting



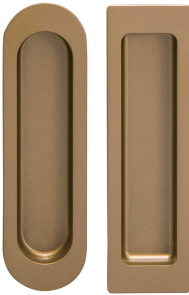
Chrome Plating



Gloss Gold



Satin Gold



Gold Painting



Satin Silver



Silver Painting



Matte Black Painting



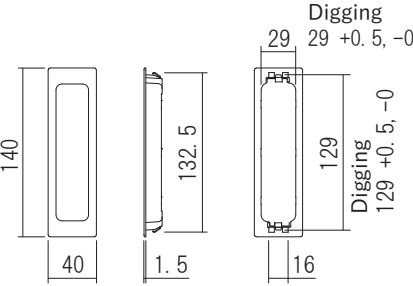
Metal One Touch Pull Round & Square Shape

One touch installation without using screws.

Material: ZDC
Door Thickness: More than 30mm

Metal One Touch Pull Round & Square Shape		
Product No.		
Round	Square	Finish/Color
222-671-1	222-677-1	Gloss Gold
222-672-1	222-678-1	Satin Gold
222-673-1	222-679-1	Gold Painting
222-674-1	222-680-1	Chrome Plating
222-675-1	222-681-1	Satin Silver
222-676-1	222-682-1	Silver Painting
222-684-1	222-683-1	Matte Black Painting

※ 1pc price.



Above digging specification can be applied to both round and square shape.





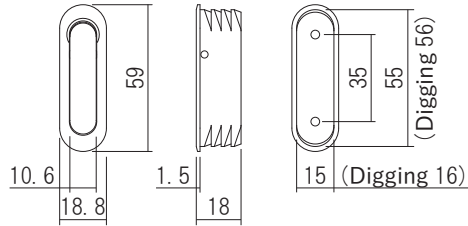
Pocket Door Edge Pull Handle

Push it and the hook comes out, the hook will be a handle.
When the hook is inside of the pocket, the surface is flat.
It can be applied to a folding door and an under floor storage.

Material:ZDC
Door Thickness:More than 27mm

Pocket Door Edge Pull Handle 59	
Product No.	Finish/Color
220-306	Paint Silver
220-307	Mirror Silver
220-308	Satin Silver

Screw included:
3×12 Flat head tapping screw 2pcs



Satin Silver



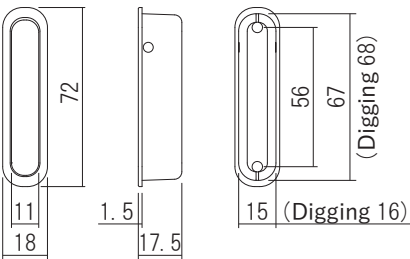
Paint Silver



Mirror Silver

Pocket Door Edge Pull Handle 72	
Product No.	Finish/Color
220-301	Paint Silver
220-302	Mirror Silver
220-303	Satin Silver

Screw included:
4×20 Flat head tapping screw(D6) 2pcs



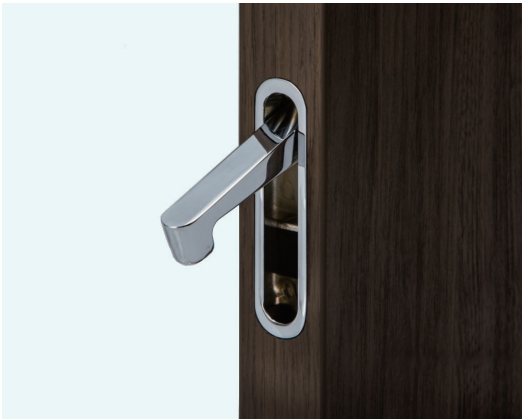
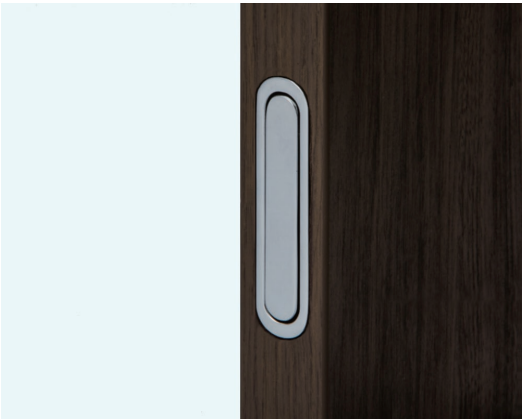
Paint Silver



Mirror Silver



Satin Silver



Heavy Duty Hung Door Roller

Load capacity is 100kg for a heavy sliding door.
Durability is excellent, passed 500,000 times open-close test.

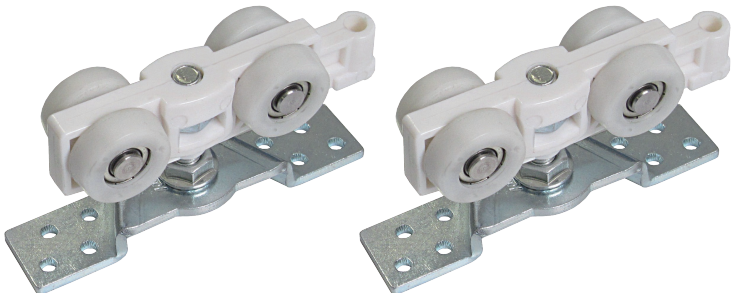
Material:〈Roller〉Resin, Steel
〈Hung Door Rail〉Aluminum
〈Upper Stopper〉Resin
〈Floor Guide〉Resin
Load Capacity:980N(100kg)
Finish/Color:〈Roller〉White
〈Hung Door Rail〉Silver
〈Upper Stopper〉White
〈Floor Guide〉White

Heavy Duty Hung Door Roller	
Product No.	Length of the rail (mm)
320-026	1,820
320-027	2,730
320-028	3,640

Parts included:
Roller 2pcs, Hung Door Rail 1pcs
Upper Stopper 2pcs, Floor Guide 1pcs
Screw included:
〈Roller〉
4×40 Oval head tapping screw 16pcs
〈Hung Door Rail〉
4×45 Flat head tapping screw
(The number depends on the rail length.)
〈Floor Guide〉
4×30 Flat head tapping screw 3pcs



Hung Door Rail

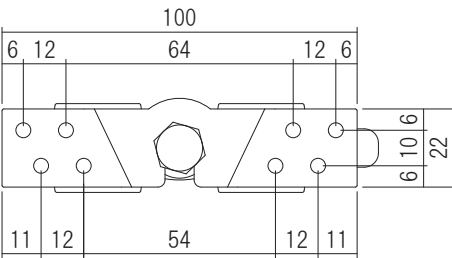
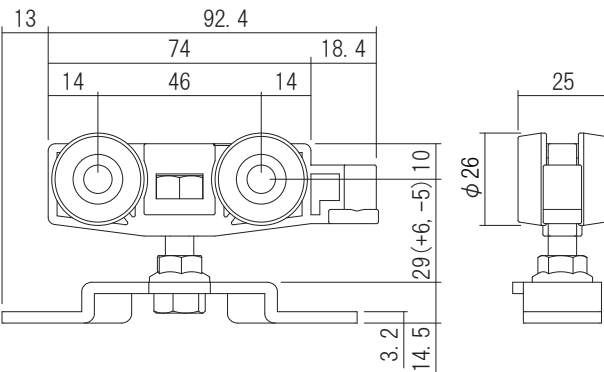


Heavy Duty Hung Door Roller

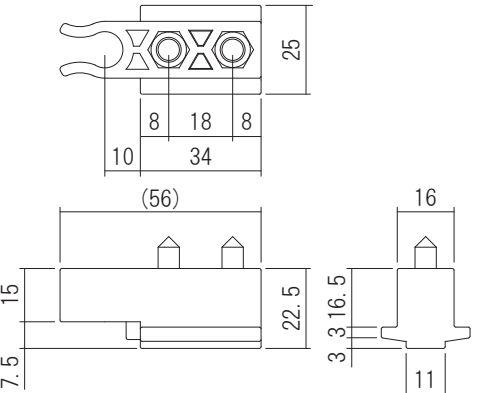


Upper Stopper

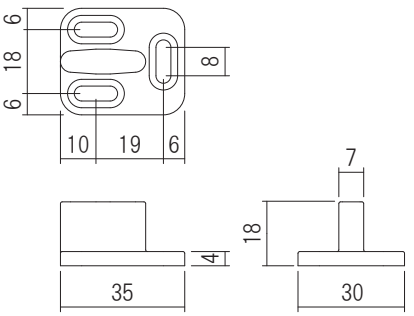
Floor Guide



Heavy Duty Hung Door Roller



Upper Stopper



Floor Guide