

SLs Series

These SLs unified bathroom accessories are widely used for bathrooms and restrooms, from regular residential to high-end condominiums. This series features a luxurious chrome finish and invisible mounting screws. In addition, the SLs towel ring is available in 2 different types, round and square types.

SLs Paper Holder

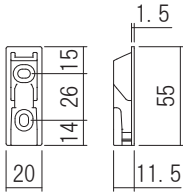


Material: <Base, Bracket>Resin  
<Paper cut plate, Bar>Stainless

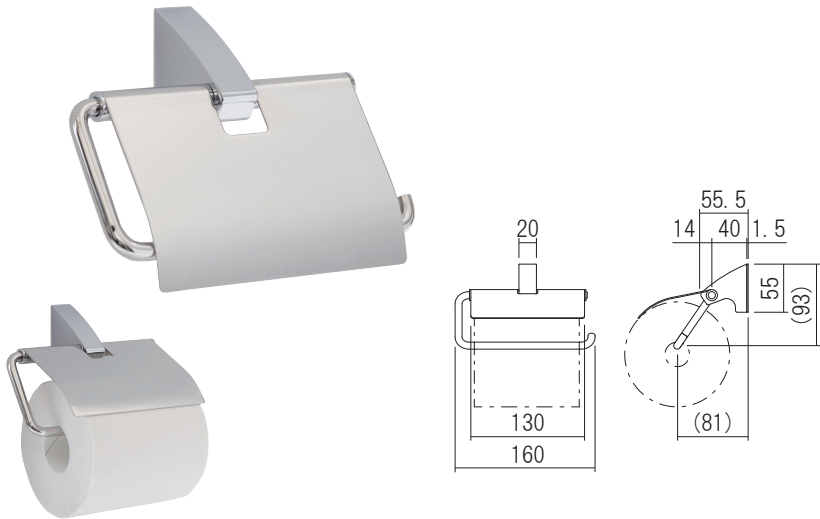
SLs Paper Holder

Product No.	Finish/Color
610-895	Chrome

Screw included:  
4 × 30 Truss head tapping screw 2pcs



Common base



SLs Towel Bar

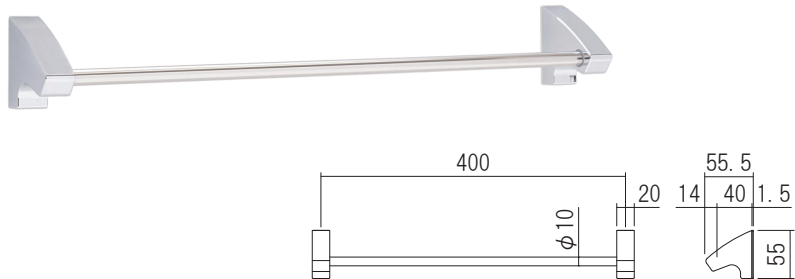


Material: <Base, Bracket>Resin  
<Bar>Stainless

SLs Towel Bar

Product No.	Finish/Color
610-892	Chrome

Screw included:  
4 × 30 Truss head tapping screw 4pcs



SLs Towel Ring



Material: <Base, Bracket>Resin  
<Ring>Stainless

SLs Towel Ring

Product No.	Ring	Finish/Color
610-890	Round	Chrome
610-891	Oval	

Screw included:  
4 × 30 Truss head tapping screw 2pcs



Round

Oval



One Touch Paper Holder



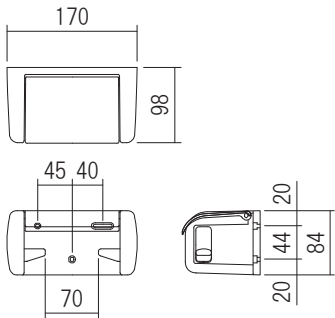
This simple and well-designed one-touch toilet paper holder is popular due to its effortless toilet roll changing process. Press the new roll up from the bottom, pull the old roll's core out, and now you've got a fresh batch of toilet paper. This product is widely used for restrooms in residential, business hotels, and public facilities. It's available in 4 different colors to suit your bathroom interior design.

Material: Resin

One Touch Paper Holder

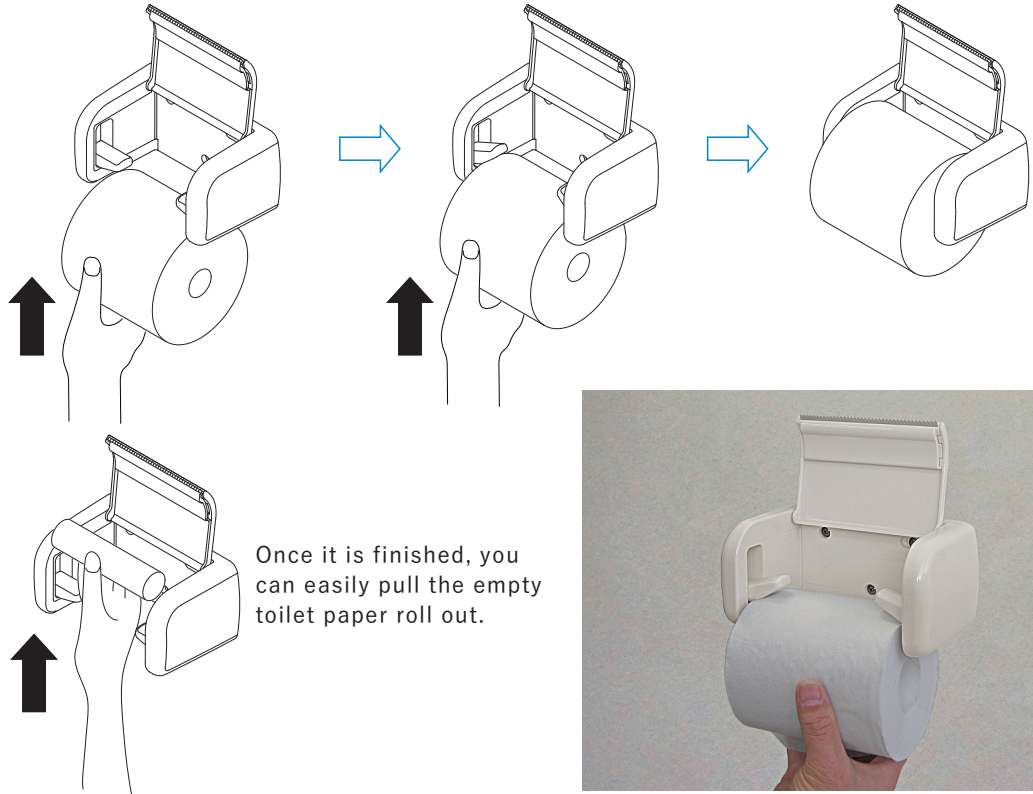
Product No.	Specification	Finish/Color
610-201	—	White
610-202		Ivory
610-203		Pink
610-205		Black
610-204	One hand cut	White

Screw included:  
4 × 30 Truss head tapping screw 3pcs



How to Hang a Toilet Paper

You can easily hang it over by simply pushing it up from the bottom.  
(Make sure the toilet paper holder's arms fit into both ends of the roll)



Once it is finished, you can easily pull the empty toilet paper roll out.

