

Knob

Not only comfortable to hold but these cabinet knobs are designed with different styles and finishes. The combination of function and beauty of the knobs are good reasons to use them in your house to enhance the design interior.

Round Knob

Material:ZDC
Door Thickness:16~26mm

Round Knob		
Product No.	Size(mm)	Finish/Color
222-011	φ 25	Satin Silver
222-013		Satin Gold
222-014		Dark Amber
222-015		Iron Black
222-016		Brass Gold
222-021	φ 30	Satin Silver
222-023		Satin Gold
222-024		Dark Amber
222-025		Iron Black
222-026		Brass Gold

Screw included:
M4×30 Truss head machine screw 1pcs



ND Knob

Material:ZDC
Door Thickness:18~26mm

ND Knob		
Product No.	Size(mm)	Finish/Color
223-001	φ 30	Satin Silver
223-002		Satin Gold

Screw included:
M4×30 Truss head machine screw 1pcs

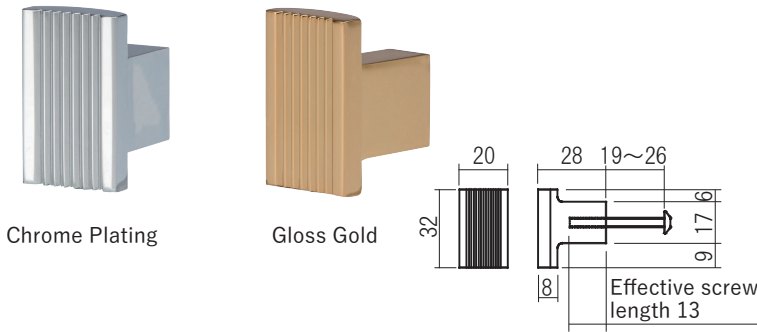


Square Knob

Material:ZDC
Door Thickness:19~26mm

Square Knob		
Product No.	Size(mm)	Finish/Color
224-011	32×20	Chrome Plating
224-012		Gloss Gold

Screw included:
M4×30 Truss head machine screw 1pcs

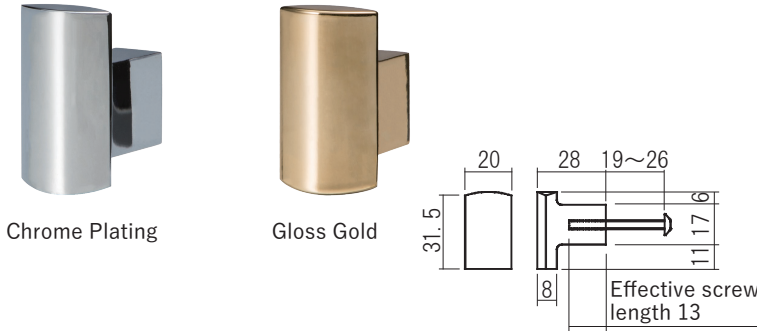


Oval Knob

Material:ZDC
Door Thickness:19~26mm

Oval Knob		
Product No.	Size(mm)	Finish/Color
225-011	31.5×20	Chrome Plating
225-012		Gloss Gold

Screw included:
M4×30 Truss head machine screw 1pcs



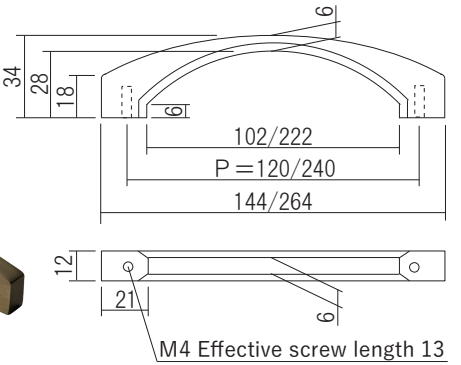
Closet Handle

Sleek and stylish modern cabinet pulls are sophisticated yet simple hardware to elevate the style of spaces in your home. The pulls below are rich in styles, colors and designed to be comfortable to hold so that you can place them vertically or horizontally in cabinet doors or drawers in the living rooms, kitchens, bathrooms, etc. We also use several materials to suit your preferences, from affordable resin to ZDC.

Door Thickness:18~24mm

Closet Handle			
Product No.	P: length	Material	Finish/Color
222-252	120mm	ZDC	Satin Silver
222-262			Satin Gold
222-272	240mm	ADC	Satin Silver
222-282			Satin Gold
222-292	120mm	Resin	Silver Painting
222-202			Gold Painting

Screw included:
M4×30 Truss head machine screw 2pcs



Privacy Pull

Material:ZDC
Door Thickness:30~33mm

Privacy Pull	
Product No.	Finish/Color
222-722	Satin Silver
222-723	Satin Gold

※ Price for two pieces as one set.
Screw included:
M4×20 Flat head machine screw 2pcs



Satin Silver



Satin Gold

