

Hinged Door Soft Closer

Patent

45kg
OK

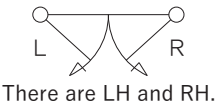
This door closer is suitable for indoor use, either on a new or an existing door. It helps to reduce the unpleasant noise of the door hitting the frame and prevent it from slamming shut. The door closer will decelerate the speed of the door at ±40 mm towards the end and automatically pull the door to close perfectly. The installation can be done easily using the attached pattern paper. Once installed, the closing speed can be adjusted. Compared to the other products, ours has outstanding durability as it has passed 500,000 times during the performance test.

Adjustable range: Up- down ±5 mm, right- left ±5 mm,
front- back ±4 mm
Material: <Main unit/ Spool bracket>Resin, Steel
<Liner>Steel

Hinged Door Soft Closer			
Product No.			
LH	RH	Door Weight	Finish/Color
312-021	312-025	10~30kg	Gold Painting
312-022	312-026	(98~294N)	Silver Painting
312-023	312-027	※1	Gray
312-024	312-028		Brown
312-051	312-055	45kg	Gold Painting
312-052	312-056	(441N)	Silver Painting
312-053	312-057	※2	Gray
312-054	312-058		Brown

Screw included:
<Bracket>
4×30 Binding head tapping screw 2pcs
<Main unit>
4×30 Pan head tapping screw 2pcs
4×20 Flat head tapping screw 3pcs
M4×12 Pan head machine screw 2pcs
M4 Flat washer 2pcs

※1 Recommended door weight:10~25kg
※2 Recommended door weight:26~40kg



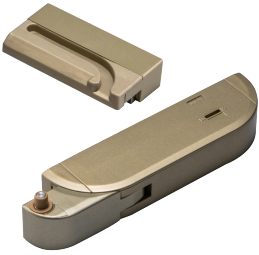
There are LH and RH.



Gray (R)



Brown (R)



Gold Painting (R)



Silver Painting (R)



Door Installation Liner

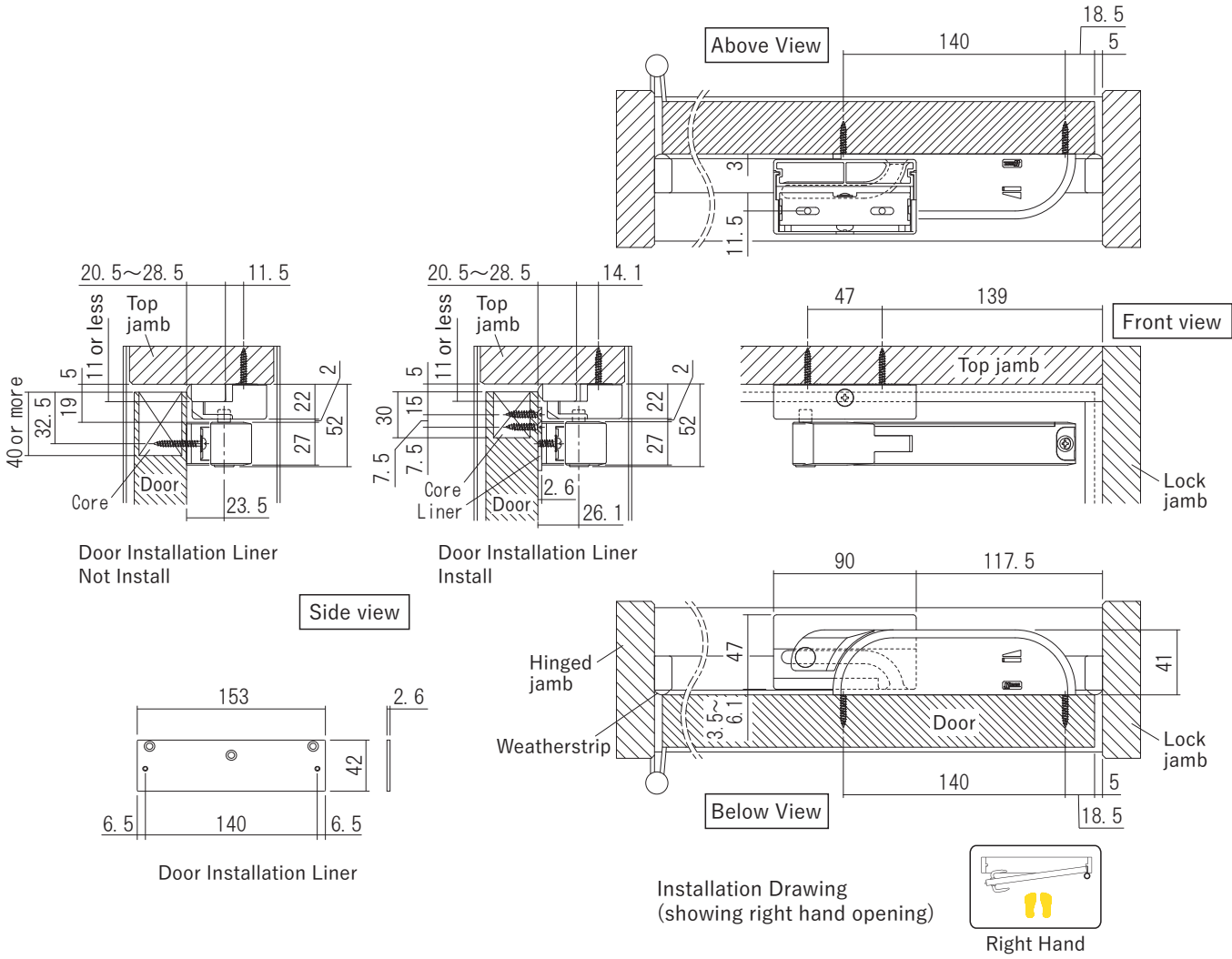
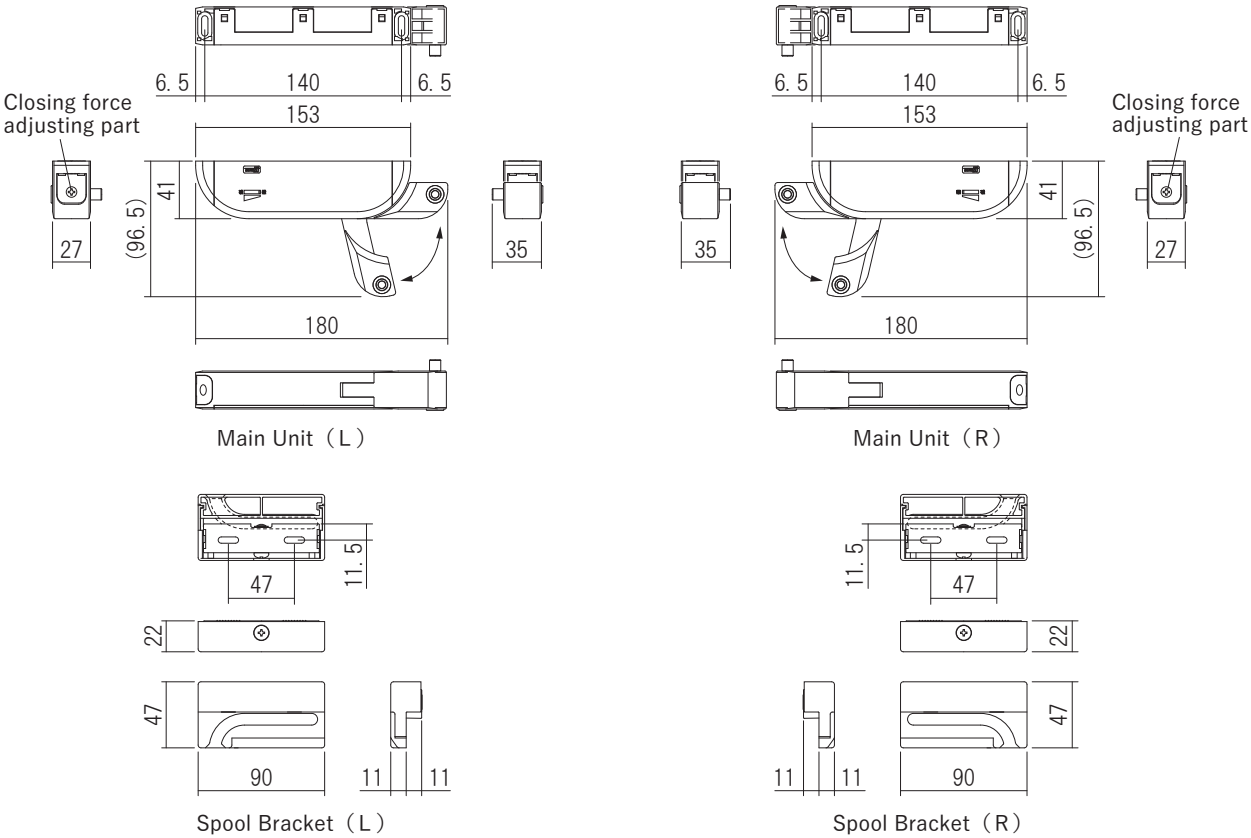


Right Hand

The arm extends once it is released from the spool bracket.



Right Hand



※ This drawing is only for reference.
For installation, please use the manual and pattern paper attached to the product.