

Pivot Hinge

Patent

30kg OK

33-36mm

This hinge is fixed in the top and bottom of the door. The design is slim, so it doesn't interfere with the design of the door. Once the bottom part is fixed, the upper part is easily set by pulling down the upper pin and put it back in place. Once installed, the front-back, right-left, up-down adjustment can be made easily using a screwdriver. This type of hinge is very durable as it has passed 200,000 operation tests, and it is also available in four high-quality finishing colors.

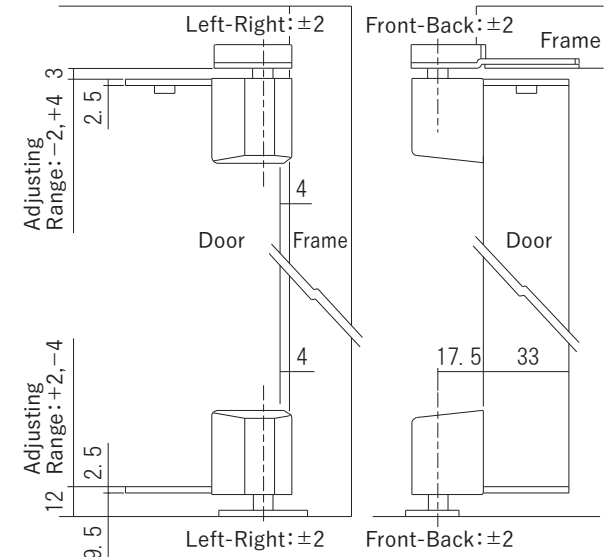
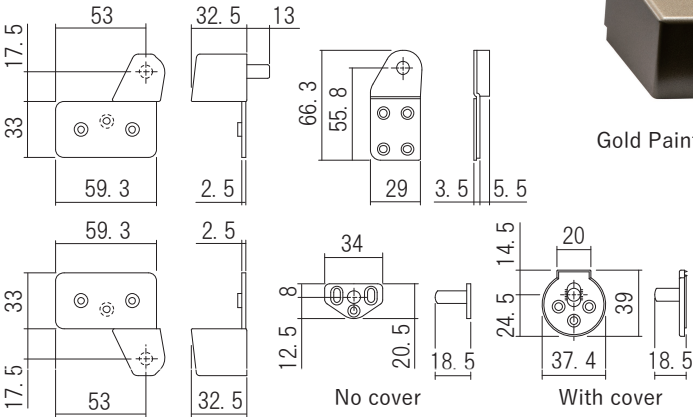
Material: (Main unit)Steel, ZDC (Cover)Resin
Load Capacity:30kg(294N)
Recommended Door Thickness:33mm
Adjusting Range:Front-Back±2, Left-Right±2
Up-Down+2mm, -4mm

L

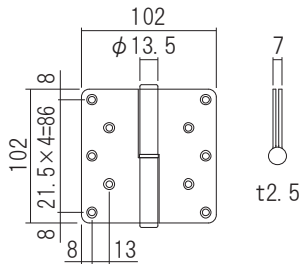
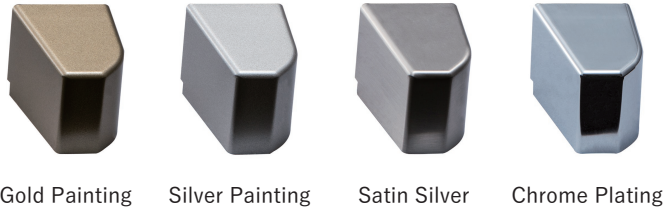
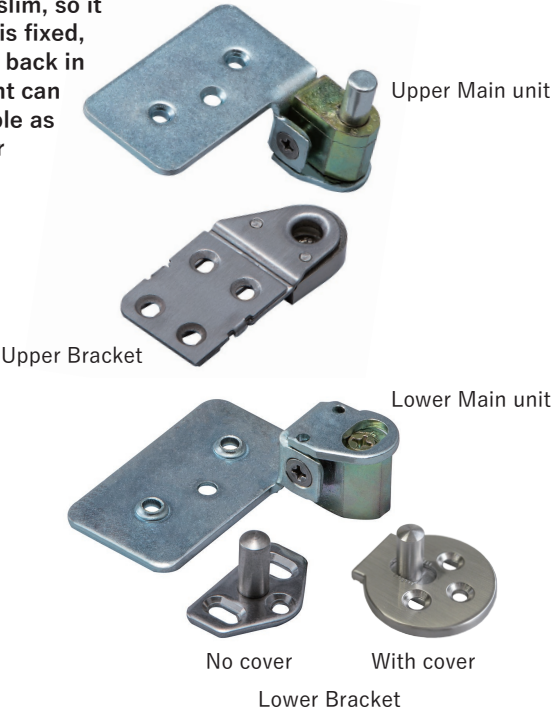
R

There are LH and RH.

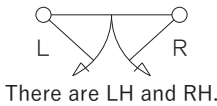
Pivot Hinge			
Product No.			
LH	RH	Lower Bracket	Finish/Color
215-011	215-015	No cover	Gold Painting
215-012	215-016		Silver Painting
215-013	215-017		Satin Silver
215-014	215-018		Chrome Plating
215-011N	215-015N	With cover	Gold Painting
215-012N	215-016N		Silver Painting
215-013N	215-017N		Satin Silver
215-014N	215-018N		Chrome Plating
Screw included:			
〈Upper Bracket〉 3.5×25 Flat head tapping screw 4pcs			
〈Lower Bracket〉 3.5×25 Flat head wood screw 3pcs			
〈Main unit〉 3.5×30 Flat head tapping screw 6pcs			



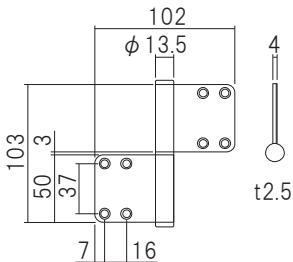
Drawing for Installation (Drawing for Right-Hand)
※ Digging is necessary on door and frame.



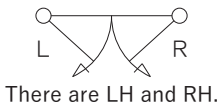
※ This drawing is Right-Hand



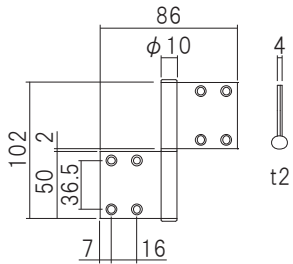
There are LH and RH.



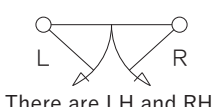
※ This drawing is Right-Hand



There are LH and RH.



※ This drawing is Right-Hand



There are LH and RH.



Silver Painting (R)



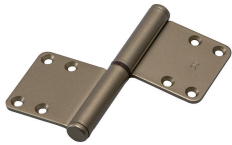
Amber Painting (R)



Gold Painting (L)



Amber Painting (R)



Gold Painting (R)



Raw Material (R)



Amber Painting (R)



Gold Painting (R)

Butt Hinge

294N OK

This standard type hinge consists of knuckles and leaves. The leaves use high-strength steel, and the hinge itself has passed 200,000 operation tests. Thus, this hinge has excellent strength and durability. In addition, the installation can be done easily as the leaves can be removed and then attached to the door and frame separately. The knuckles are also easy to insert and remove to ease the fixing process.

Material:Steel
Load Capacity:30kg(294N)_When using 2pcs

Butt Hinge		
Product No.		
Left-Hand	Right-Hand	Finish/Color
201-021	201-011	Silver Painting
201-022	201-012	Amber Painting
201-023	201-013	Gold Painting

Screw included: 4×25 Flat head tapping screw 10pcs

Lift Off Hinge

294N OK

This flag hinge uses high-strength steel for the leaves part, and the hinge itself has passed 200,000 operation tests. Thus, this hinge has excellent strength and durability. In addition, the installation can be done easily as the leaves can be removed and then attached to the door and frame separately. The knuckles are also easy to insert and remove to ease the fixing process.

Material:Steel
Load Capacity:30kg(294N)_When using 2pcs

Lift Off Hinge		
Product No.		
Left-Hand	Right-Hand	Finish/Color
201-222	201-212	Amber Painting
201-223	201-213	Gold Painting

Screw included: 4×25 Flat head tapping screw 8pcs

Stainless Lift Off Hinge

294N OK

The leaves of this flag hinge uses SUS 304 with excellent resistance to corrosion and rust. Also, the hinge itself has passed 200,000 operation tests. Thus, this hinge has excellent durability. The installation can be done easily as the leaves can be removed and then attached to the door and frame separately. The knuckles are also easy to insert and remove to ease the fixing process.

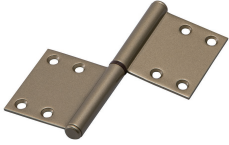
Material:Stainless
Load Capacity:30kg(294N)_When using 2pcs

Stainless Lift Off Hinge		
Product No.		
Left-Hand	Right-Hand	Finish/Color
201-521	201-511	Raw Material
201-522	201-512	Amber Painting
201-523	201-513	Gold Painting

Screw included: 4×25 Flat head tapping screw 8pcs



Amber Painting (R)



Gold Painting (R)