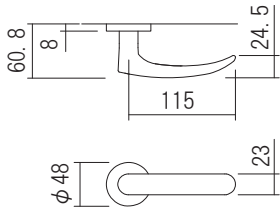


Cygnus Type 11



This lever has an adequate weight and a convex shape. Not only it emphasizes the comfort of usability, but it also creates the sense of casual perfect for a room with minimal decoration.

Material: Aluminum  
Standard Finish: SW·SA·SG·SB·CR·PG  
Customizable Finish: PC·CG·BC·SPC·SCG·SBC  
Door Thickness: 28~40mm



1M-SA



2M-SG



2C-SA



2C-SG



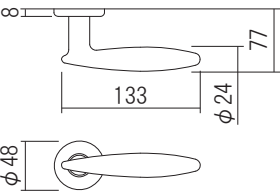
2L-SG

Volans Type 131



This lever has a basic round bar with a raised part in the middle of the lever, offering a unique design.

Material: Zinc  
Standard Finish: SW·SA·SG·SB·CR·PG  
Customizable Finish: PC·CG·BC·SPC·SCG·SBC  
Door Thickness: 28~40mm



1M-CR



3C-CR



3M-PG



3M-CR



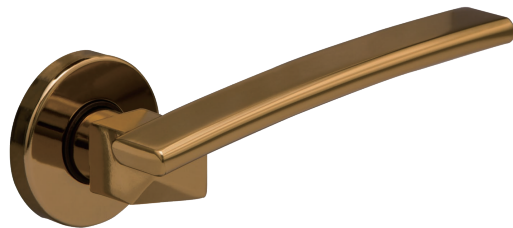
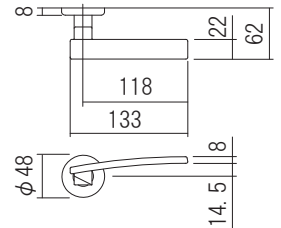
2C-PG

Sagitta Type 14

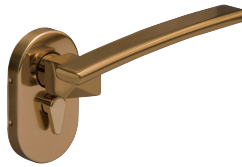


This solid lever is heavier than the others. The angled cutting combines with the bent gripping part creates an unquestionably unique design.

Material: Aluminum  
Standard Finish: SW·SA·SG·SB·CR·PG  
Customizable Finish: PC·CG·BC·SPC·SCG·SBC  
Door Thickness: 28~40mm



1M-PG



2K-PG



2C-CR



2F-CR



2J-CR

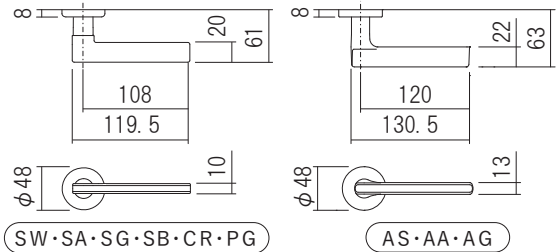
Norma Type 15



This slim and simple lever is suitable for a room with less decoration and a modern ambiance. This lever has also been adapted in a five-stars hotel.

Material: Aluminum  
Standard Finish: SW·SA·SG·SB·CR·PG·AS·AA·AG  
Customizable Finish: PC·CG·BC·SPC·SCG·SBC  
Door Thickness: 28~40mm

※The shape varies slightly depending on the finish.



1M-CR



1L-SG



2F-CR



3C-PG



2C-SG