



TS Hook Lock

TS Hook Lock is a well-design product winning the Good Design Award. It combines a hook lock and a puller in one unit to be attached to an indoor sliding door. The lock-unlock operation can be done easily by sliding the knob up and down (see fig. Detailed photo 1). It has a streamlined design and a vast surface with some textured parts to highlight a modern minimalist style. On cylinder type, a dimple key with 100 combinations is used to ensure safety. The strike plate is available with or without a trigger, and there are 6 different colors to complement any sliding door color.

Material: <Pull>ZDC
<Lock Case, Strike>Stainless, Steel
Door Thickness: 28~36mm
Strike Installation Range: Up-Down ± 5mm, Depth 3.5mm

TS Hook Lock		Key	Finish/Color
Product No.		Specification	
No trigger	With trigger		
224-701	224-701T	Privacy lock	Gloss Pearl Chrome
224-702	224-702T		Black Gold
224-703	224-703T		Satin Silver
224-704	224-704T		Black Silver
224-705	224-705T		Matte Black Painting
224-706	224-706T		Chrome Plating
224-711	224-711T	Indicator lock	Gloss Pearl Chrome
224-712	224-712T		Black Gold
224-713	224-713T		Satin Silver
224-714	224-714T		Black Silver
224-715	224-715T		Matte Black Painting
224-718	224-718T		Chrome Plating
224-721	224-721T	Cylinder lock	Gloss Pearl Chrome
224-722	224-722T		※1 Black Gold
224-723	224-723T		Satin Silver
224-724	224-724T		Black Silver
224-716	224-716T		Matte Black Painting
224-719	224-719T		Chrome Plating
224-725	224-725T	Cylinder lock	Gloss Pearl Chrome
224-726	224-726T		※1・※2 Black Gold
224-727	224-727T		Satin Silver
224-728	224-728T		Black Silver
224-717	224-717T		Matte Black Painting
224-720	224-720T		Chrome Plating
224-748	224-748T	Lock Case (Round type faceplate)	
224-749	224-749T	Lock Case (Rectangle type faceplate)	
224-580	224-580	Adjustable Strike (Round type faceplate)	
224-598	224-598	Adjustable Strike (Rectangle type faceplate)	
224-750	224-750	Spare key	

Half indicator. (It only show red color when it locked.)

※1 With 2 keys.

※2 This cylinder doesn't protrude.

(Only for 33~36mm door thickness.)

※ The strike plate and faceplate is also available in rectangle type.

※ The finishing color of the strike plate and faceplate is hairline.

Screw included:

<Pull>

M4×25 Flat head machine screw(D7) 2pcs

<Lock Case>

3.5×20 Flat head tapping screw(D7) 2pcs

<Strike>

3.5×20 Flat head tapping screw(D7) 2pcs



Rectangle type Adjustable Strike
Round type No trigger

TS Hook Lock

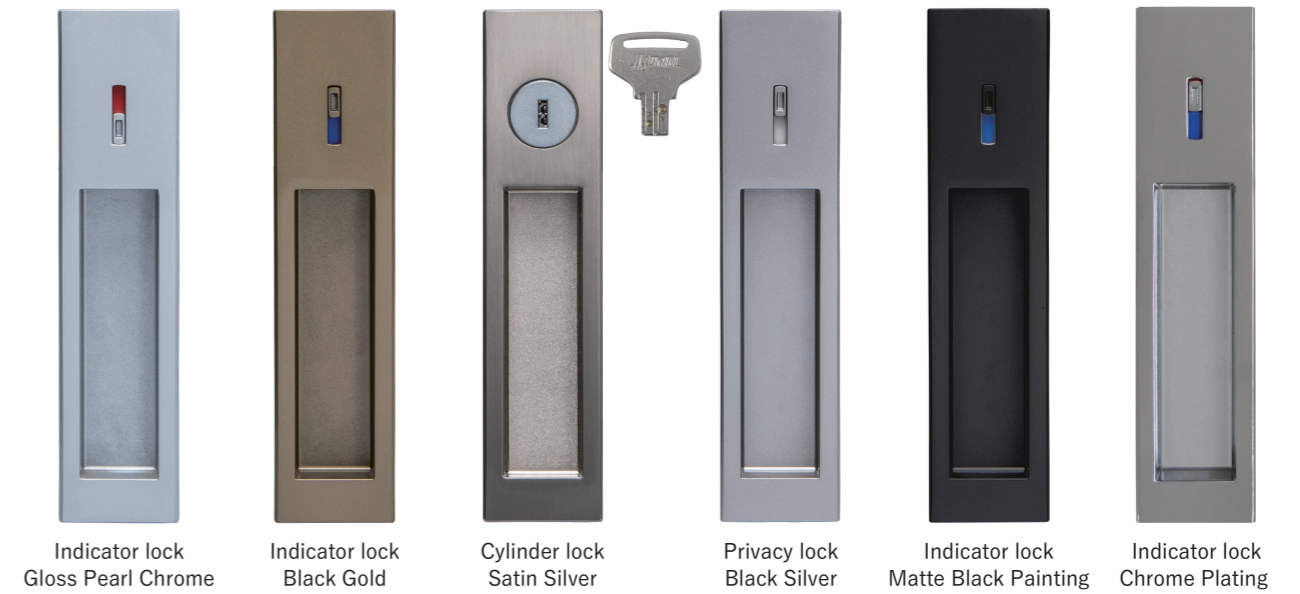


With trigger

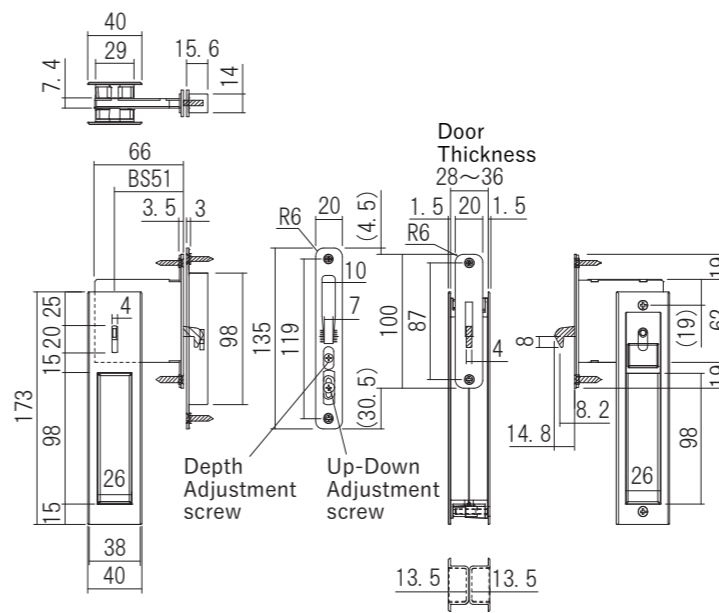


Outdoor side

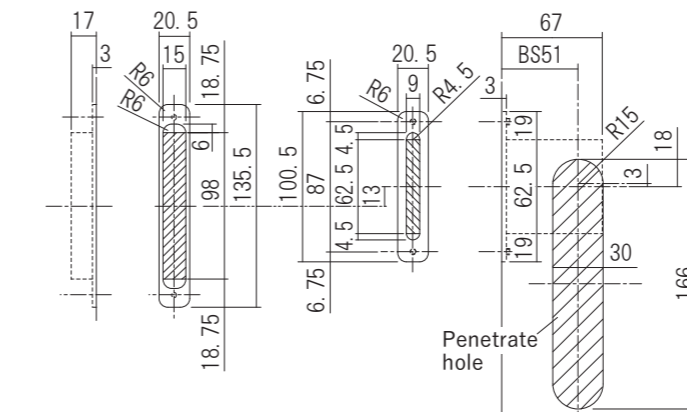
Outdoor side



Indicator lock Gloss Pearl Chrome
Indicator lock Black Gold
Cylinder lock Satin Silver
Privacy lock Black Silver
Indicator lock Matte Black Painting
Indicator lock Chrome Plating

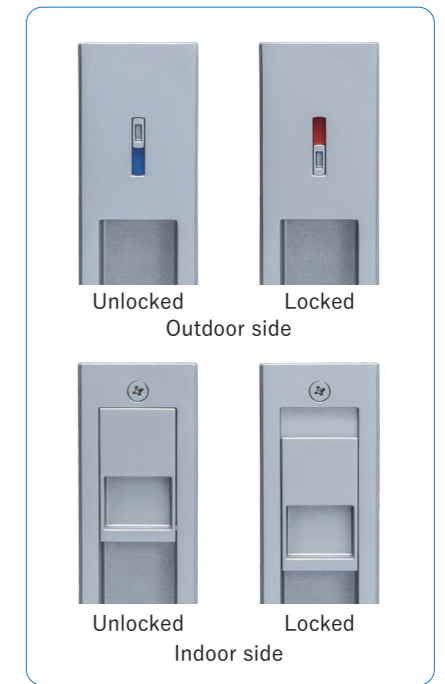


TS Hook Lock + Adjustable Strike



Strike digging drawing

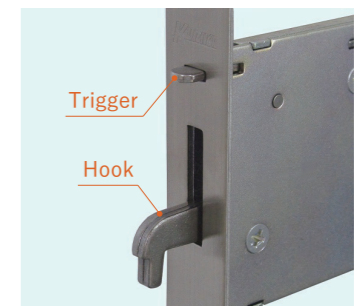
Pull-Lock Case digging drawing



Detailed photo 1

With trigger

When the sliding door is open, the hook doesn't protrude. The trigger retracts into the case when the sliding door is closed.



Trigger
Hook