

Top Hung Soft Closer Set

Made to be installed on an indoor sliding door, this top-hung damper will slowly pull the door from ±70 mm before it closes. Thus, it can reduce the unpleasant noise of the door hitting the frame. The door will close completely without any gap regardless of the strength or speed adjusted during the installation. This product has passed the 200,000 times operation test and comes with an adjustable roller, and wheels with bearing for optimal long-term performance. Not only offering excellent technical function, but this soft closer is also fully recessed to embraces a stylish architectural appearance. This top hung soft closer can be attached to both ends of the door. ※1

※1 Please contact us for further details.

Material: <Main unit, Hook>Stainless
<4 Wheels Adjuster>Resin
<Sliding Door Rail>Aluminum
<Guide Pin>Stainless, Resin

Load Capacity:30kg(294N)

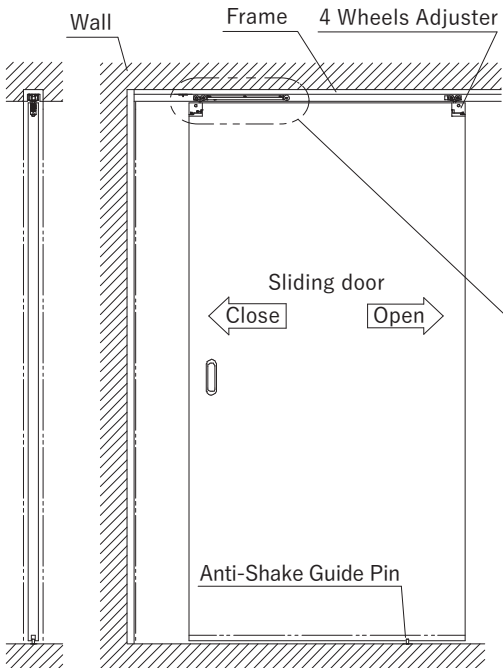
Installation Range:Up-Down ± 3mm, Left-Right ± 2mm

Finish/Color:<Main unit, Hook>Raw Material
<4 Wheels Adjuster>Amber・White
<Sliding Door Rail>Silver
<Guide Pin>Raw Material

Top Hung Soft Closer Set		
Product No.	Finish/Color	Rail Length(mm)
312-031	Amber	1,820
312-032		2,730
312-033		3,640
312-031W	White	1,820
312-032W		2,730
312-033W		3,640

Set contents:
Top Hung Soft Closer 1pcs, Hook 1pcs
4 Wheels Adjuster 2pcs, Sliding Door Rail 1pcs
Anti-Shake Guide Pin 1pcs

Screw included:
<Hook>
3 × 16 Flat head tapping screw 2pcs
<4 Wheels Adjuster>※Including Soft Closer
3.5 × 12 Flat head tapping screw 2pcs
3.5 × 20 Pan head tapping screw 4pcs
<Sliding Door Rail>
3.5 × 45 Flat head tapping screw
(The number depends on the rail length.)
<Anti-Shake Guide Pin>
3.5 × 25 Flat head tapping screw 2pcs



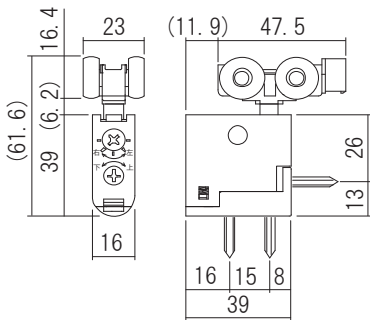
Drawing for Installation



Top Hung Soft Closer

Top Hung Soft Closer	
Product No.	Finish/Color
312-037	Amber
312-037W	White

Set contents:
Top Hung Soft Closer 1pcs
Hook 1pcs



Amber



White

4 Wheels Adjuster

This product has passed the 200,000 times operation test and uses wheels with bearing for smooth performance. In addition, the lower part can be detached and initially installed to the sliding door with one touch.

Material: Resin, Steel
Load Capacity:30kg(294N)
Installation Range:
Up-Down ± 3mm, Left-Right ± 2mm

4 Wheels Adjuster	
Product No.	Finish/Color
320-021	Amber
320-021W	White

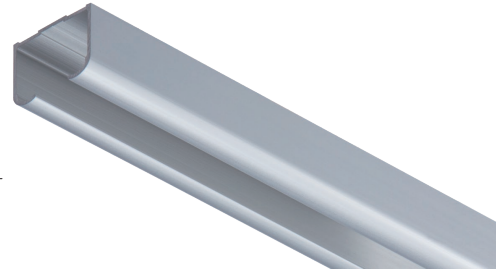
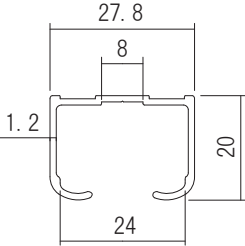
※ 1pc price.
Screw included:
3.5 × 12 Flat head tapping screw 1pcs
3.5 × 20 Pan head tapping screw 2pcs

Sliding Door Rail
(without hole for the hook)

Material: Aluminum
Load Capacity:30kg(294N)

Sliding Door Rail		
Product No.	Length(mm)	Finish/Color
310-512	1,820	Silver
310-522	2,730	
310-532	3,640	

Screw included:
3.5 × 45 Flat head tapping screw
(The number depends on the rail length.)



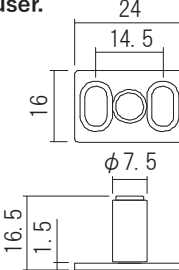
Anti-Shake Guide Pin

This pin helps the door running in the track, prevents it from swinging and shaking during opening or closing. When it collides with the door, the cylinder will spin, and the door will operate smoothly. Additionally, as it is concealed by the door, it doesn't interfere with the architectural appearance and causes no dangers for the user.

Material:Stainless, Resin
Load Capacity:30kg(294N)

Anti-Shake Guide Pin	
Product No.	Finish/Color
320-084	Raw Material

Screw included:
3.5 × 25 Flat head tapping screw 2pcs



4 Wheels Adjuster・Rail set

4 Wheels Adjuster・Rail set		
Product No.	Finish/Color	Rail Length(mm)
312-034	Amber	1,820
312-035		2,730
312-036		3,640
312-034W	White	1,820
312-035W		2,730
312-036W		3,640

Set contents:
4 Wheels Adjuster 2pcs, Sliding Door Rail 1pcs,
Anti-Shake Guide Pin 1pcs

Amber

White

