

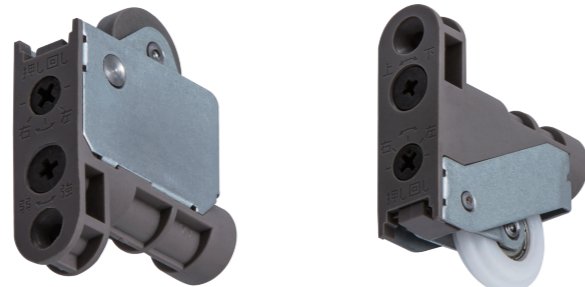
KT Adjustable Roller



Using this device, adjusting the sliding door position to maintain a smooth operation is possible as, over time, the door will slightly change due to weather and friction.

Material: Resin, Steel
Load Capacity: 30kg(294N)
Installation Range:

Upper_Left-Right ± 2mm
Lower_Up-Down ± 3mm, Left-Right ± 2mm
Appropriate Rail: Upper_Lintel Rail, Lower_T Rail



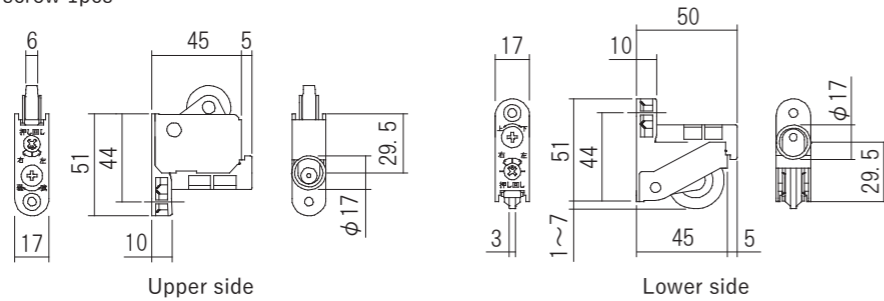
Upper side

Lower side

KT Adjustable Roller

Product No.	Specification	Finish/Color
301-332	Upper side	Amber
301-342	Lower side	

※ 1 pc price.
Screw included:
4 × 30 Flat head tapping screw 1pcs



Upper side

Lower side

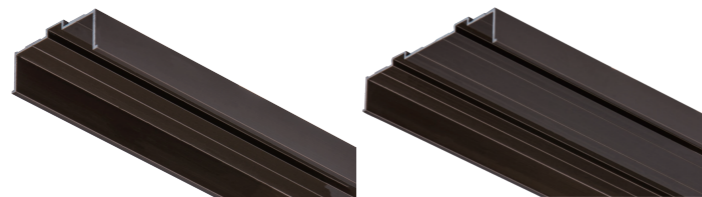
Lintel Rail



Material: Aluminum
Finish/Color: Amber

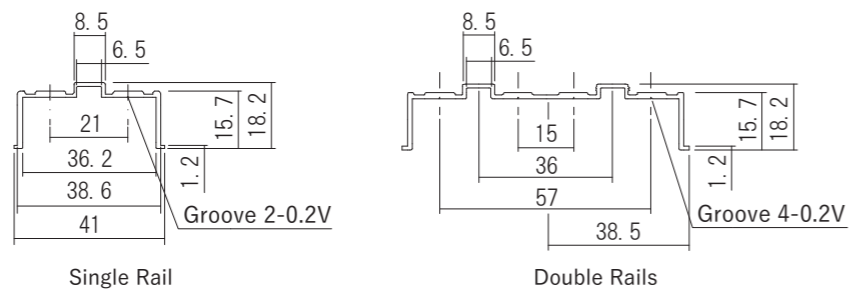
Product No.	Specification	Length (mm)
310-312A	Single Rail	1,820
310-312B		2,730
310-312C		3,640
310-412A	Double Rails	1,820
310-412B		2,730
310-412C		3,640

Screw included:
3.5 × 12 Flat head tapping screw
(The number depends on the rail length.)



Single Rail

Double Rails



Single Rail

Double Rails

T Floor Rail



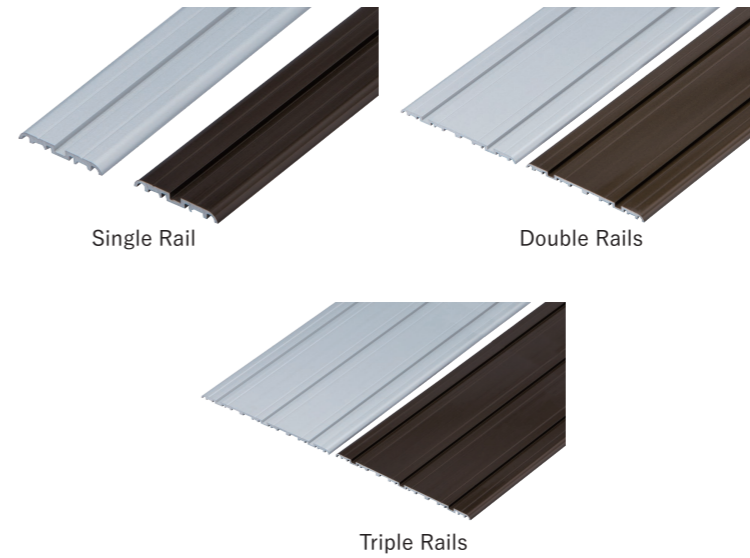
This rail is used together with the lower KT Adjusting Roller. As the height of the rail is only 3 mm, this product is barrier-free.

Material: Aluminum
Load Capacity: 30kg(294N)

T Floor Rail

Product No.	Specification	Length (mm)
310-361A	310-364A Single Rail	1,820
310-361B	310-364B	2,730
310-361C	310-364C	3,640
310-362A	310-365A Double Rails	1,820
310-362B	310-365B	2,730
310-362C	310-365C	3,640
310-363A	310-366A Triple Rails	1,820
310-363B	310-366B	2,730
310-363C	310-366C	3,640

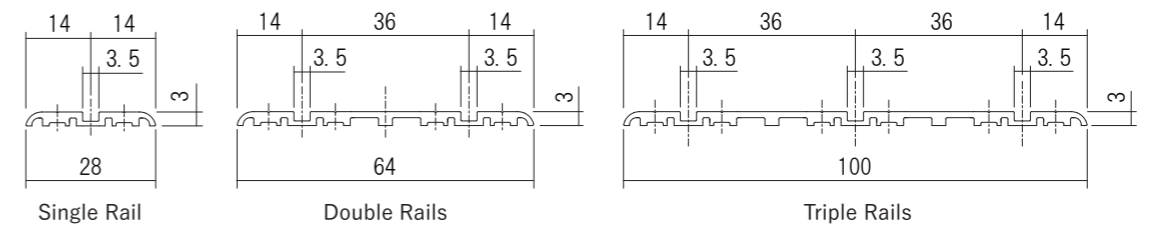
Screw included:
2.7 × 16 Flat head wood screw
(The number depends on the rail length.)



Single Rail

Double Rails

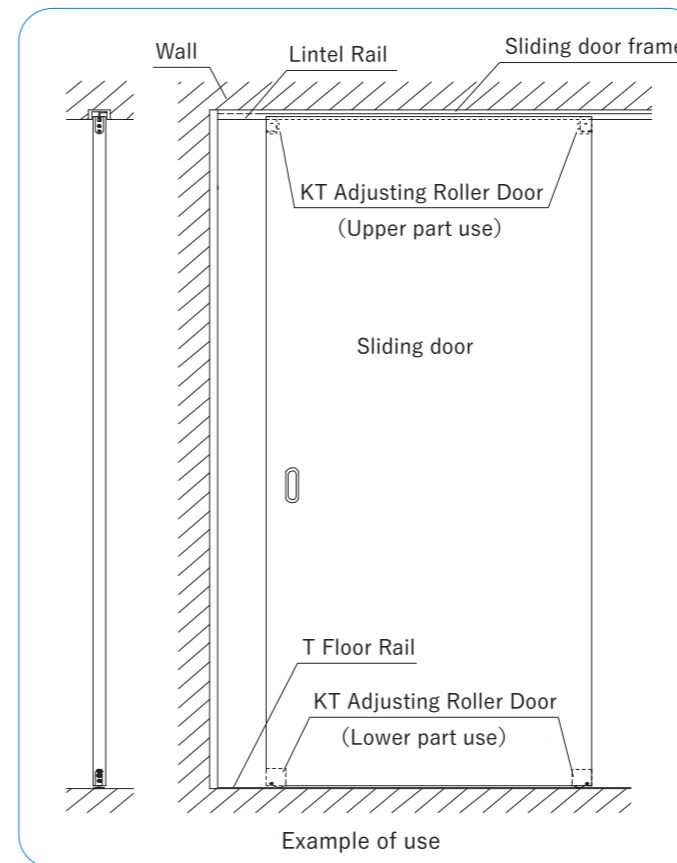
Triple Rails



Single Rail

Double Rails

Triple Rails



Example of use

