

Accessories

SL Series

SL series is a set of exclusive bathroom accessories to complete your bathroom. They have a solid and unified design suitable for fancy restaurants or high-class condominiums. Especially, the SL toilet paper holder is trendy for its teeth on the front plate, allowing users to cut the toilet paper easily and neatly. In addition, it's available in 3 different colors to create a monochrome and modern bathroom.

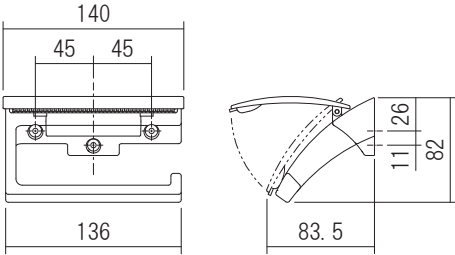
SL Paper Holder



Material: ZDC

SL Paper Holder		
Product No.	Specification	Finish/Color
610-801	—	Chrome
610-802	—	Black
610-803	—	Matte White
610-821	One hand cut	Chrome
610-822	—	Black
610-823	—	Matte White

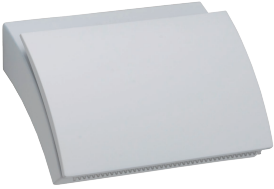
Screw included:
4 × 35 Binding head tapping screw 3pcs



Chrome



Black



Matte White



Toilet Paper
Installation state

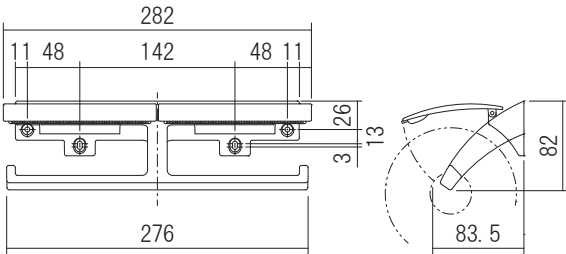
SL Double Paper Holder



Material: ZDC

SL Double Paper Holder		
Product No.	Specification	Finish/Color
610-931	One hand cut	Chrome
610-932	—	Black
610-933	—	Matte White

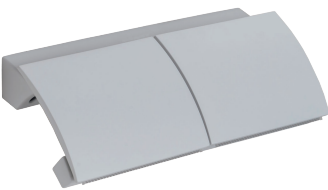
Screw included:
4 × 35 Binding head tapping screw 4pcs



Chrome



Black



Matte White



Toilet Paper
Installation state



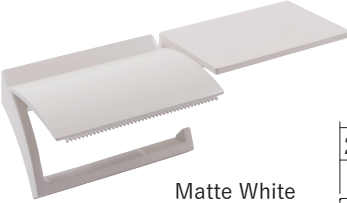
Installed image



Chrome



Black



Matte White

The mounting position of the paper roll can be exchanged left and right.
※Accessories other than the main body are not included.

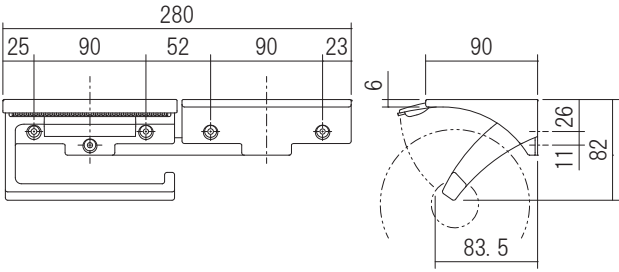
2-in-ONE Paper Holder
(SL 2-in-ONE Paper Holder)



Material: (Paper Holder, Built-in Surface) ZDC
(Base) Stainless

2-in-ONE Paper Holder (SL 2-in-ONE Paper Holder)		
Product No.	Specification	Finish/Color
610951	One hand cut	Chrome
610952	—	Black
610953	—	Matte White

Screw included:
4 × 35 Binding head tapping screw 5pcs



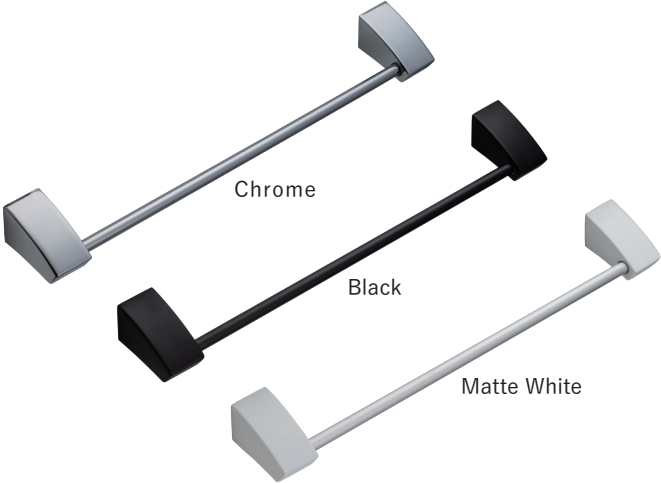
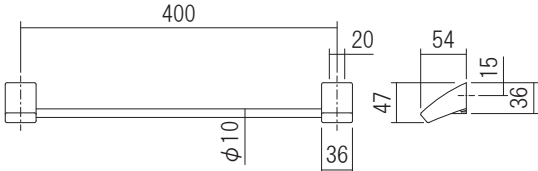
SL Towel Bar



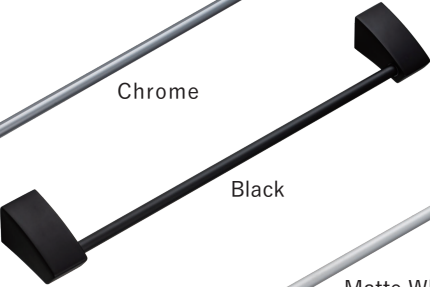
Material: (Bracket) ZDC
(Bar) Brass (Chrome)
Aluminium (Black, Matte White)

SL Towel Bar		
Product No.	P: length (mm)	Finish/Color
610-851	400mm	Chrome
610-852	—	Black
610-853	—	Matte White

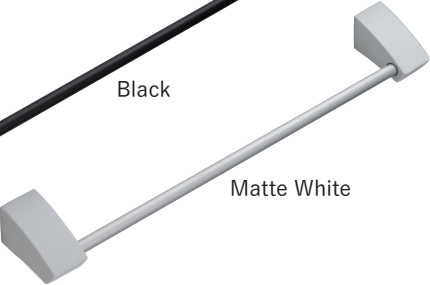
Screw included:
4 × 35 Binding head tapping screw 4pcs



Chrome



Black



Matte White

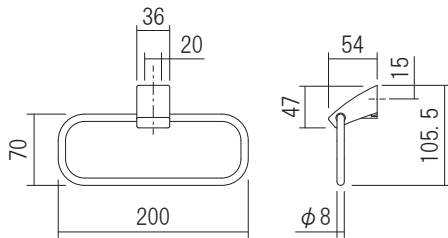
SL Towel Ring



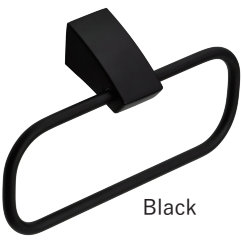
Material: (Bracket) ZDC
(Ring) Brass (Chrome)
Aluminium (Black, Matte White)

SL Towel Ring		
Product No.	Ring width	Finish/Color
610-871	200mm	Chrome
610-872	—	Black
610-873	—	Matte White

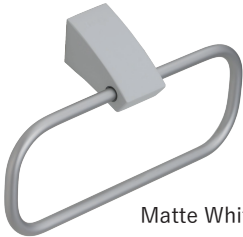
Screw included:
4 × 35 Binding head tapping screw 2pcs



Chrome



Black



Matte White

SLs Series

These SLs unified bathroom accessories are widely used for bathrooms and restrooms, from regular residential to high-end condominiums. This series features a luxurious chrome finish and invisible mounting screws. In addition, the SLs towel ring is available in 2 different types, round and square types.

SLs Paper Holder

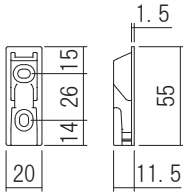


Material: <Base, Bracket>Resin
<Paper cut plate, Bar>Stainless

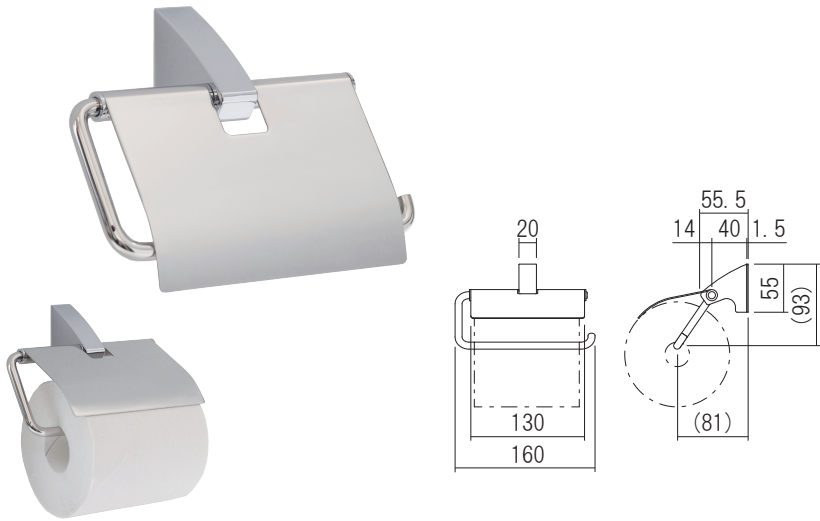
SLs Paper Holder

Product No.	Finish/Color
610-895	Chrome

Screw included:
4 × 30 Truss head tapping screw 2pcs



Common base



SLs Towel Bar

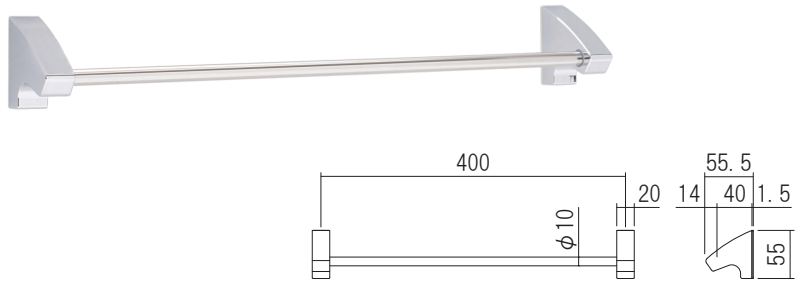


Material: <Base, Bracket>Resin
<Bar>Stainless

SLs Towel Bar

Product No.	Finish/Color
610-892	Chrome

Screw included:
4 × 30 Truss head tapping screw 4pcs



SLs Towel Ring

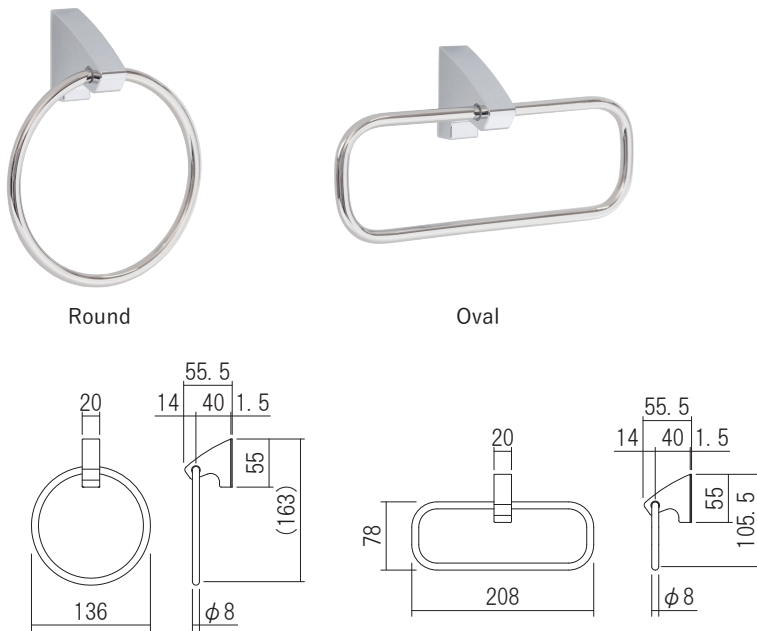


Material: <Base, Bracket>Resin
<Ring>Stainless

SLs Towel Ring

Product No.	Ring	Finish/Color
610-890	Round	Chrome
610-891	Oval	

Screw included:
4 × 30 Truss head tapping screw 2pcs



One Touch Paper Holder



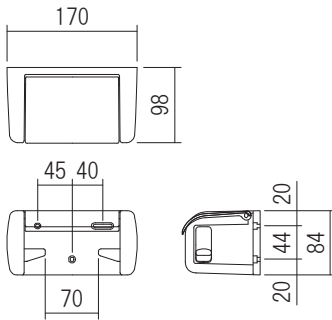
This simple and well-designed one-touch toilet paper holder is popular due to its effortless toilet roll changing process. Press the new roll up from the bottom, pull the old roll's core out, and now you've got a fresh batch of toilet paper. This product is widely used for restrooms in residential, business hotels, and public facilities. It's available in 4 different colors to suit your bathroom interior design.

Material: Resin

One Touch Paper Holder

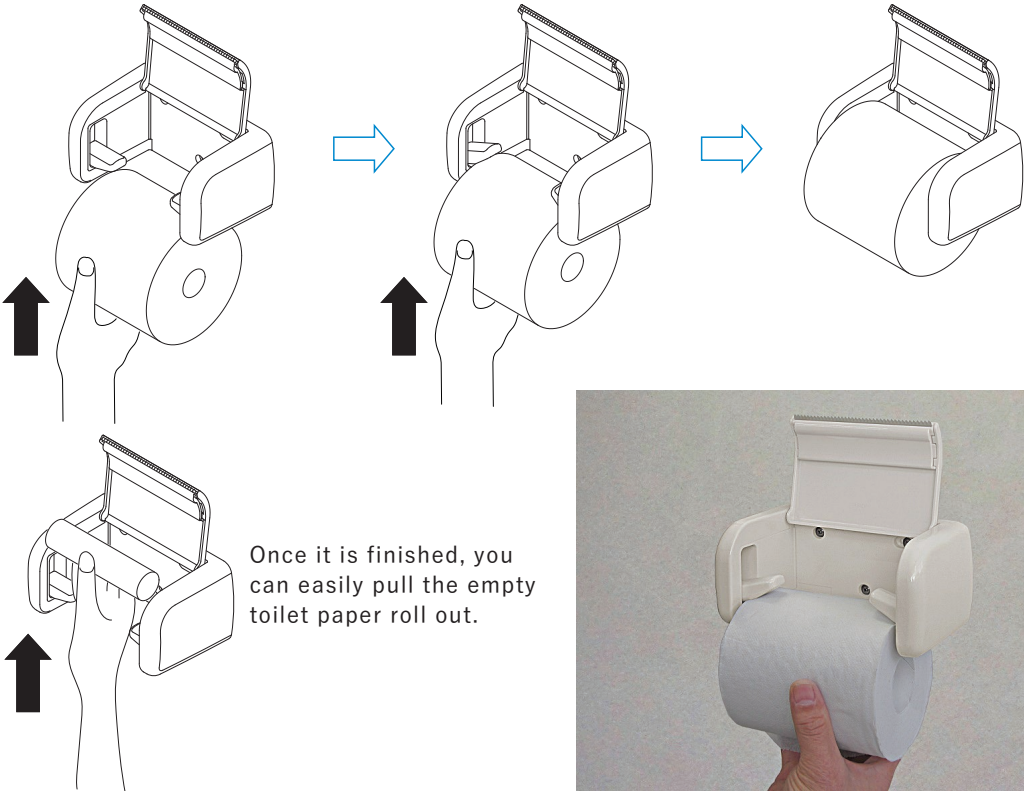
Product No.	Specification	Finish/Color
610-201	—	White
610-202		Ivory
610-203		Pink
610-205		Black
610-204	One hand cut	White

Screw included:
4 × 30 Truss head tapping screw 3pcs



How to Hang a Toilet Paper

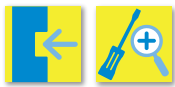
You can easily hang it over by simply pushing it up from the bottom.
(Make sure the toilet paper holder's arms fit into both ends of the roll)



Once it is finished, you can easily pull the empty toilet paper roll out.



Recessed Paper Holder

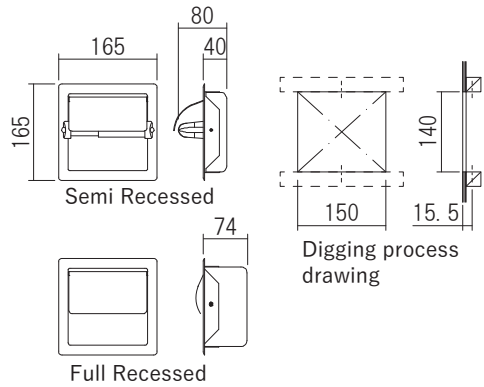


This recessed type of paper holder stores the toilet paper inside the wall. It is often used in business hotels to maximize the use of compact space effectively. This product is available in a single and double holder (vertical/ horizontal placement), either in semi-recessed and fully recessed types.

Material: <Body>Stainless
<Holder>Resin

Recessed Paper Holder		
Product No.	Specification	Finish/Color
610-221	Semi Recessed	Mirror Surface/Gray
610-221BK		Mirror Surface/Black
610-211	Full Recessed	Mirror Surface/Gray
610-211BK		Mirror Surface/Black

Screw included:
3.5×20 Truss head tapping screw 2pcs



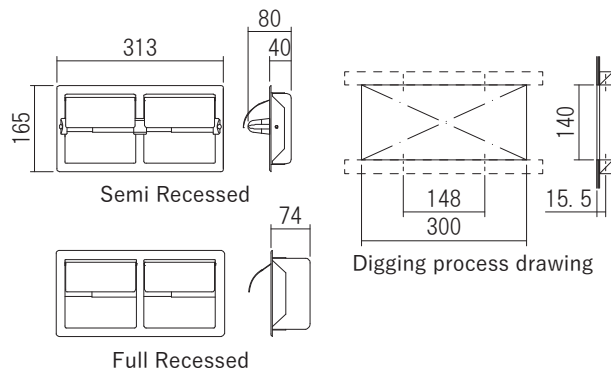
Semi Recessed



Full Recessed

Recessed Double Horizontal Paper Holder		
Product No.	Specification	Finish/Color
610-321	Semi Recessed	Mirror Surface/Gray
610-321BK		Mirror Surface/Black
610-311	Full Recessed	Mirror Surface/Gray
610-311BK		Mirror Surface/Black

Screw included:
3.5×20 Truss head tapping screw 4pcs



Semi Recessed



Full Recessed

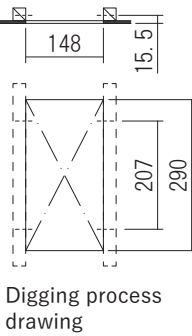
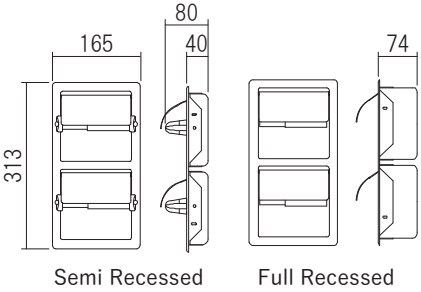


Semi Recessed

Full Recessed

Recessed Double Vertical Paper Holder		
Product No.	Specification	Finish/Color
610-421	Semi Recessed	Mirror Surface/Gray
610-421BK		Mirror Surface/Black
610-411	Full Recessed	Mirror Surface/Gray
610-411BK		Mirror Surface/Black

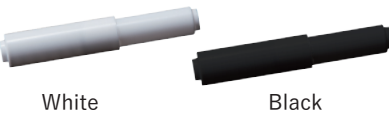
Screw included:
3.5×20 Truss head tapping screw 4pcs



Paper Holder's Back Guard	
Product No.	Specification
610-332	Single semi Recessed/Chromate Coating
610-432	Single full Recessed/Chromate Coating
610-331	Double semi Recessed/Chromate Coating
610-431	Double full Recessed/Chromate Coating

※ For the paper holder with a back guard type, the installation method is different.

Recessed Paper Holder's spare roll core		
Product No.	Material	Finish/Color
610-210	Resin	White
610-210B		Black

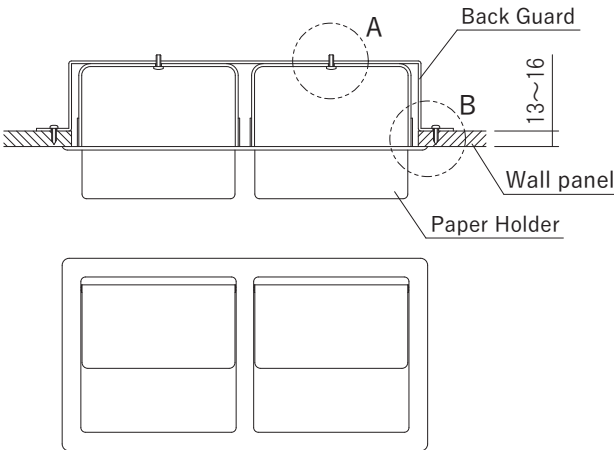


White

Black

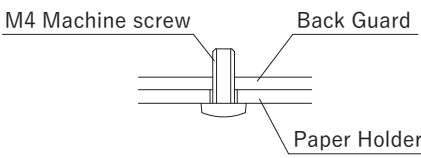
This is an installation method with a back guard.

In case of using a Recessed Double Horizontal Paper Holder.



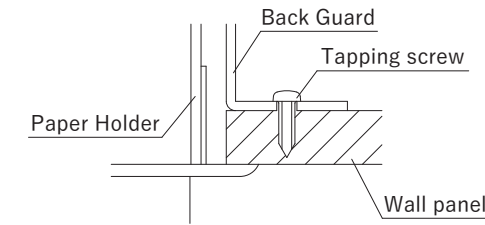
Detail of part A

The installation of the back guard and the paper holder.



Detail of part B

The installation of the back guard to the wall.



Towel Hanger with Shelf

This is a bathroom shelf with a towel bar to maximize the wall space. The open shelf is made of natural wood to give enough storage. While the towel bar is made from sturdy metal to keep your towels accessible and dry. With this piece, you'll have more storage without taking up living space to keep your bathroom neat and tidy.

Material : <Shelf>Natural Wood
<Towel bar, Bracket>Stainless

Towel Hanger with Shelf	
Product No.	Finish/Color
620-030	Light
620-031	Middle
620-032	White
Screw included:	
4 × 40 Flat head tapping screw 4pcs	

Shelf

This wooden shelf is suitable to create extra space by maximizing the wall. It can be used widely from hotels to residential's various spaces such as bathrooms, kitchens, living rooms, bedrooms, etc., to store items. It's available in 3 different colors to suit any room's interior design.

Material : <Shelf>Natural Wood
<Bracket>Stainless

Shelf		
Product No.	Width(mm)	Finish/Color
620-001	280	Light
620-002		Middle
620-003		White
620-007	330	Light
620-008		Middle
620-009		White
620-013	613	Light
620-014		Middle
620-015		White
Screw included:		
4 × 40 Flat head tapping screw		
<Shelf width 280, 330> 4pcs		
<Shelf width 613> 8pcs		

Towel Rack

This simple and easy to mount towel rack is suitable for use in the bathrooms, washrooms, etc. With the metal being resistant to moisture and corrosion, it means that it's not going to fade as time passes. It's available in 2 different sizes, 350 mm and 400 mm. This product is mostly used in the compact bathroom of a business hotel.

Material: <Bar>Stainless
<Bracket>Resin

Towel Rack		
Product No.	P: length(mm)	Finish/Color
610-111	350	White
610-112		Black
610-121	400	White
610-122		Black
Screw included:		
4 × 30 Pan head tapping screw 4pcs		

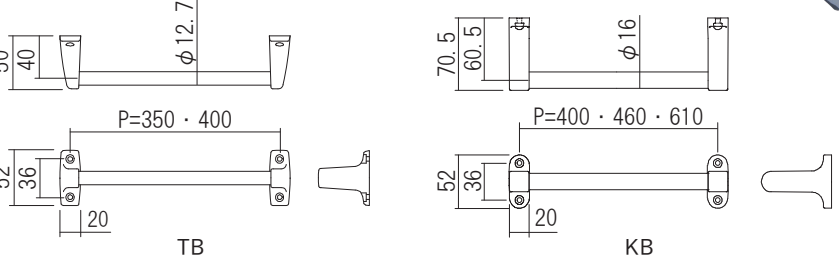
Towel Bar

The towel bar is mostly placed in bathrooms or washrooms to allow towels to dry without being bunched up, so they dry faster. You can choose this product from different color, length, size of the bar, and the bracket to suit your bathroom's interior design.

Material: <Bracket>Resin
<Bar>Stainless

Towel Bar TB (Bar φ 12.7mm)		
Product No.	P: length(mm)	Finish/Color
610-011	350	White
610-015		Black
610-017		Chrome Plating
610-012	400	White
610-016		Black
610-018		Chrome Plating
Screw included:		
4 × 30 Pan head tapping screw 4pcs		

Towel Bar KB (Bar φ 16mm)		
Product No.	P: length(mm)	Finish/Color
610-021	400	White
610-027		Black
610-022		Chrome Plating
610-023	460	White
610-028		Black
610-024		Chrome
610-025	610	White
610-029		Black
610-026		Chrome Plating
Screw included:		
4 × 30 Pan head tapping screw 4pcs		

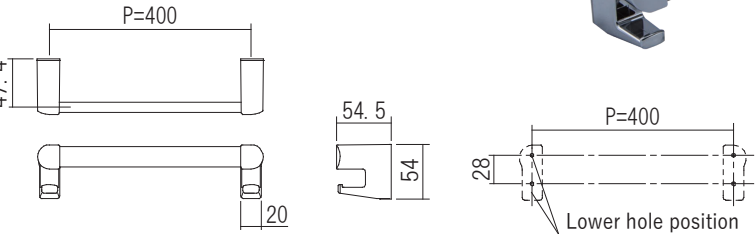


Towel Shelf with Hooks

This product combines a towel bar and a hook for more convenience. It uses a square bar to prevent towels from falling off, and if you use robes, the hook is a useful complement to hold and stretch it out to length and get completely dry. Moreover, the design is also compact and seamless as the mounting screws are invisible.

Material: <Bracket>Resin
<Bar>Stainless

Towel Shelf with Hooks (Bar 20 × 10mm)		
Product No.	P: length(mm)	Finish/Color
610-013	400	White Gray
610-014		Chrome Plating
Screw included:		
4 × 30 Truss head tapping screw 4pcs		



Bathroom Push Pull Lock

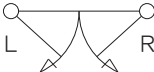
This is a Good Design Award-winning push-pull lock for the bathroom door. The door can be easily opened or closed even when both of your hands are occupied. Not only it has good usability, but it also has a beautiful design.

Material: Resin

Bathroom Push Pull Lock

Product No.	Specification	Finish/Color
FUP-35LK/W	Left-Hand	White
FUP-35RK/W	Right-Hand	

Screw included:
M4×40 Truss head machine screw 3pcs
M4×12 Pan head machine screw with a washer 2pcs
M4×10 Flat pan head machine screw 2pcs



There are LH and RH.



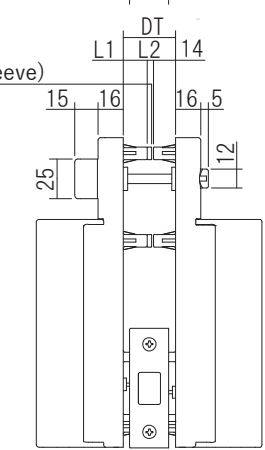
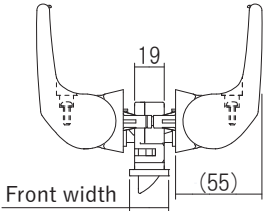
Installation example



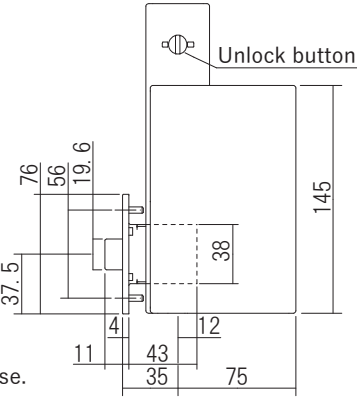
Indoor side
(Left-Hand use)



Outdoor side
(Left-Hand use)

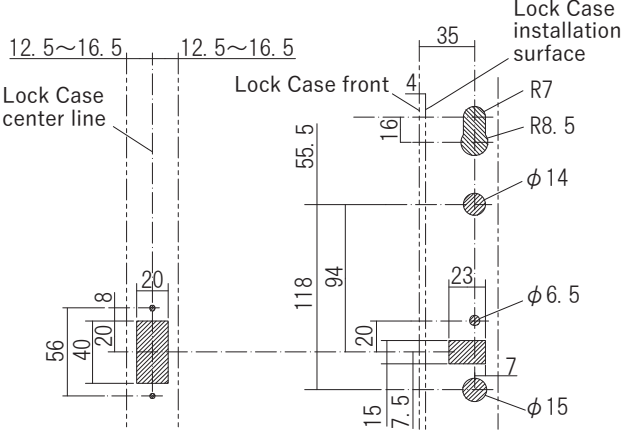


This drawing is for Right-Hand use.



(mm)

Door Thickness	L 1	L 2	L 3	Front width
33	15	4	3	25
30	15	1	0	25
29	10	5	4	25
25	10	1	0	22



Cutaway view



Child Lock

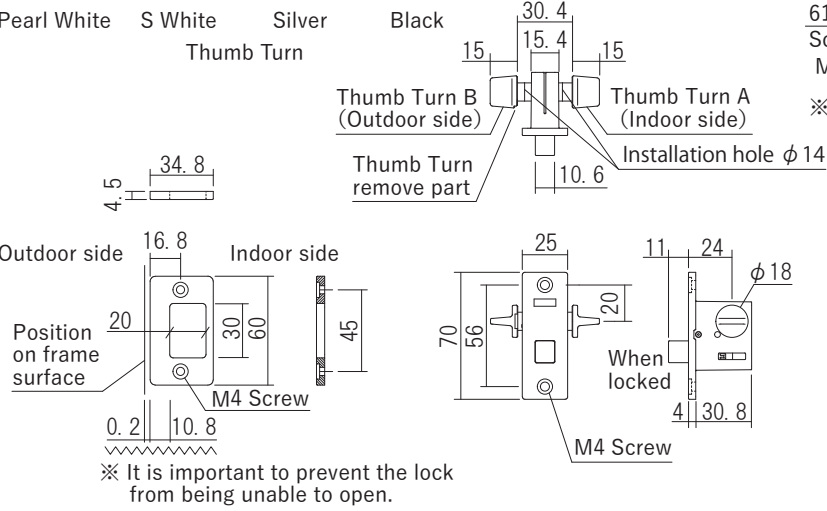
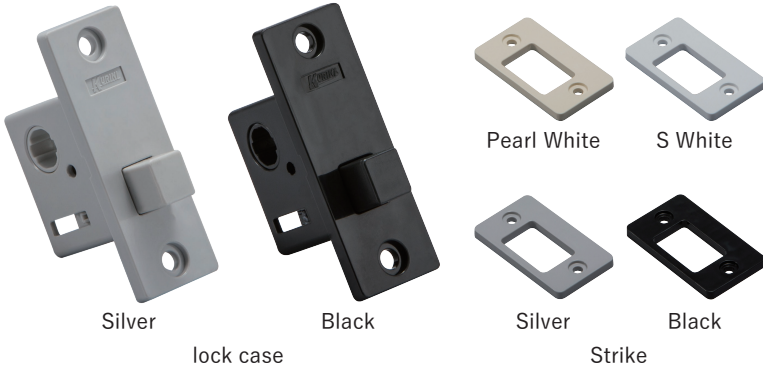
This is a separate lockset for bathroom doors. It also features the "child lock" function by placing it in a higher position where children cannot reach and operate it. It's available in 4 different colors to complement any bathroom door color.

Material: Resin
Door Thickness: 30mm

Child Lock

Product No.	Finish/Color
610-920	Pearl White
610-921	S White
610-922	Silver
610-923	Black

Screw included:
M4 Flat pan head machine screw 4pcs
※ The Black lock case is only for Black finish.
For other color finishes, the lock case is Silver.



When unlocked When locked



Bathroom Lid Holder

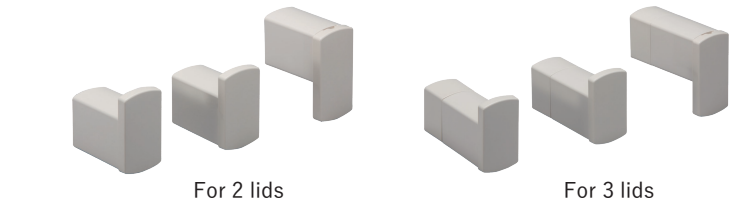
This product is a holder to store the bathtub lid when not in use. This holder is not taking up the space on the floor but maximizes the use of the wall instead. Slide the hook up and down to take and store the bathtub lids. There are two different sizes to fit the size of your bathtub lids.

Material: Resin

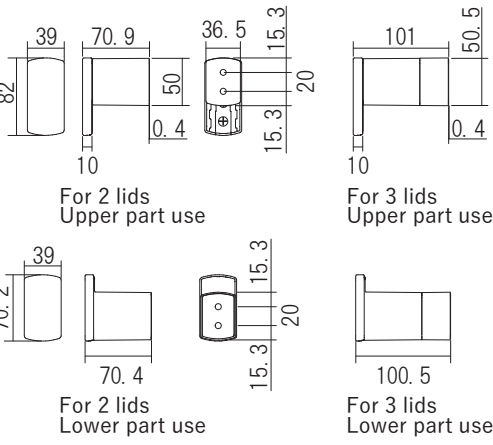
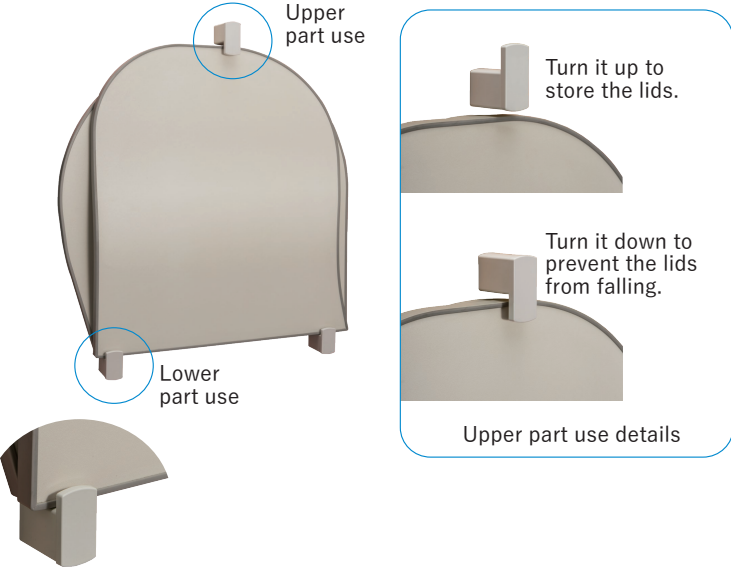
Bathroom Lid Holder

Product No.	Specification	Finish/Color
610-910	For 2 lids	White
610-911	For 3 lids	

Screw included:
〈For 2 lids〉4×30 Truss head tapping screw 6pcs
〈For 3 lids〉4×60 Truss head tapping screw 6pcs



For 2 lids For 3 lids



YH Laundry Pipe



This fixed-length laundry pipe allows you to dry the clothes in the bathroom. It uses sturdy stainless steel to hold the heavy laundry and maintain hygiene. It's available in 8 different lengths to suit the bathroom size.

Material: <Pipe>Stainless
<Bracket>Resin
Load Capacity:10kg(98N)

YH Laundry Pipe set		
Product No.	Bathroom's wall dimension(mm)	Finish/Color
610-621	1,050	White Gray
610-622	1,100	
610-623	1,150	
610-624	1,200	
610-625	1,300	
610-626	1,400	
610-627	1,600	
610-628	1,750	
610-631	1,050	Chrome Plating
610-632	1,100	
610-633	1,150	
610-634	1,200	
610-635	1,300	
610-636	1,400	
610-637	1,600	
610-638	1,750	

Screw included:
4 × 25 Truss head tapping screw 4pcs

Bracket set	
Product No.	Finish/Color
610-629	White Gray
610-639	Chrome Plating

Screw included:
4 × 25 Truss head tapping screw 4pcs
※ It is included in the main body set.

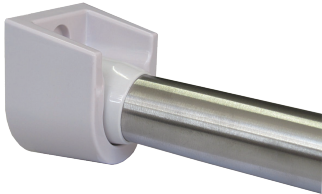
YH Laundry Pipe set	
Pipe	1pcs
Bracket set	1set

Bracket set	
Bracket	2pcs
Base plate	2sheets
Installation screw	4pcs

Warning

Safety Load Capacity:10kg(98N)

Mostly, there is a reinforcing board behind the bathroom wall. However, in some cases, it's not there, and it can cause any damages or dangers caused by the wall that's not strong enough to hold the load. Thus, please make sure of the existence of the board before installing this product.



Installation state

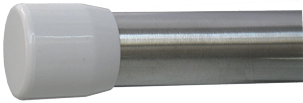


White Gray

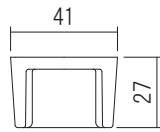
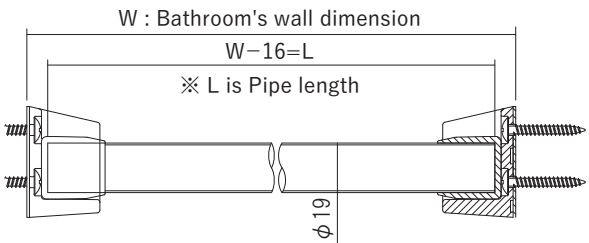


Chrome Plating

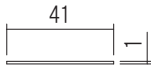
Bracket



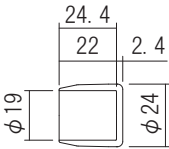
Pipe
(With one set of cap)



Bracket



Base plate



Cap

KS Laundry Pipe



This fixed-length laundry pipe allows you to dry the clothes in the bathroom. It uses sturdy stainless steel to hold the heavy laundry and maintain hygiene. Two color brackets, white and black, are available.

Material: <Pipe>Stainless
<Bracket>Resin
Load Capacity:10kg(98N)

KS Laundry Pipe set		
Product No.	Bathroom's wall dimension(mm)	Finish/Color
610-611	1,050	White
610-612	1,100	
610-613	1,150	
610-614	1,200	
610-615	1,300	
610-616	1,400	
610-617	1,600	
610-618	1,750	
610-641	1,050	Black
610-642	1,100	
610-643	1,150	
610-644	1,200	
610-645	1,300	
610-646	1,400	
610-647	1,600	
610-648	1,750	

Screw included:
4 × 25 Truss head tapping screw 4pcs

Bracket set	
Product No.	Finish/Color
610-620	White
610-649	Black

Screw included:
4 × 25 Truss head tapping screw 4pcs
※ It is included in the main body set.

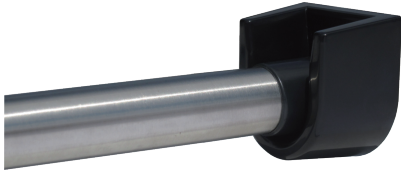
KS Laundry Pipe set	
Pipe	1pcs
Bracket set	1set

Bracket set	
Bracket	2pcs
Base plate	2sheets
Installation screw	4pcs

Warning

Safety Load Capacity:10kg(98N)

Mostly, there is a reinforcing board behind the bathroom wall. However, in some cases, it's not there, and it can cause any damages or dangers caused by the wall that's not strong enough to hold the load. Thus, please make sure of the existence of the board before installing this product.



Installation state



Pipe
(With one set of black cap)



Pipe
(With one set of white cap)

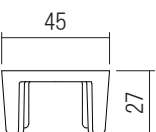
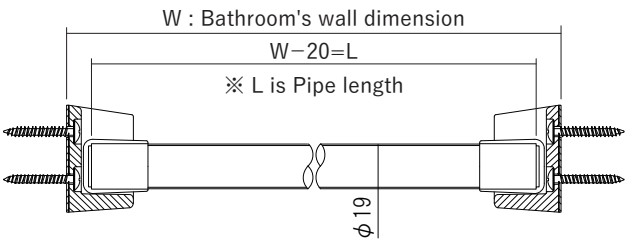


White

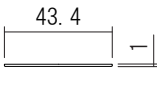


Black

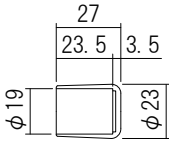
Bracket



Bracket



Base plate



Cap



KS Flexible Laundry Pipe (Double-sided tape)

This laundry pipe allows you to dry the clothes in the bathroom. The rod is expandable, so you can adjust the length to suit the size of your bathroom. It uses sturdy stainless steel to hold the heavy laundry and maintain hygiene.

Material: <Pipe>Stainless
<Bracket>Resin
Load Capacity:10kg(98N)
Finish/Color:White Gray

KS Flexible Laundry Pipe set
(Double-sided tape)

Product No.	Bathroom's wall dimension(mm)
610-651	950~1,800

Screw included:
4 × 30 Truss head tapping screw 4pcs

Bracket set (Double-sided tape)

Product No.	Finish/Color
610-655	White Gray
P1-610657	Chrome Plating

Screw included:
4 × 30 Truss head tapping screw 4pcs
※ It is included in the main body set.

KS Flexible Laundry Pipe set

Pipe	1pcs
Bracket set	1set

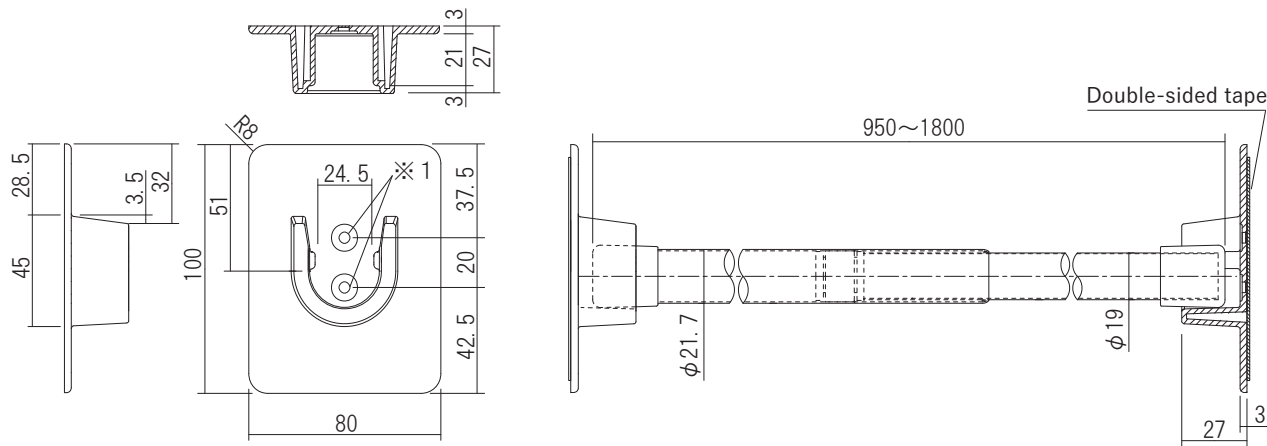
Bracket set

Bracket	2pcs
Double-sided tape	2sheets
Installation screw	4pcs

Warning

Safety Load Capacity:10kg(98N)

Mostly, there is a reinforcing board behind the bathroom wall. However, in some cases, it's not there, and it can cause any damages or dangers caused by the wall that's not strong enough to hold the load. Thus, please make sure of the existence of the board before installing this product.



※1 You can use both double-sided tape and screws when installing the bracket to the wall.



KS Flexible Laundry Pipe (Screw mounting)

This is for drying clothes in the bathroom. This laundry pipe allows you to dry the clothes in the bathroom. The rod is expandable, so you can adjust the length to suit the size of your bathroom.

Material: <Pipe>Stainless
<Bracket>Resin
Load Capacity:10kg(98N)

KS Flexible Laundry Pipe set
(Screw mounting)

Product No.	Bathroom's wall dimension(mm)	Finish/Color
610-652	950~1,800	White Gray
610657		Chrome Plating

Screw included:
4 × 35 Flat head tapping screw 4pcs

Bracket set (Screw mounting)

Product No.	Finish/Color
610-656	White Gray
P1-610657	Chrome Plating

Screw included:
4 × 35 Flat head tapping screw 4pcs
※ It is included in the main body set.

KS Flexible Laundry Pipe set

Pipe	1pcs
Bracket set	1set

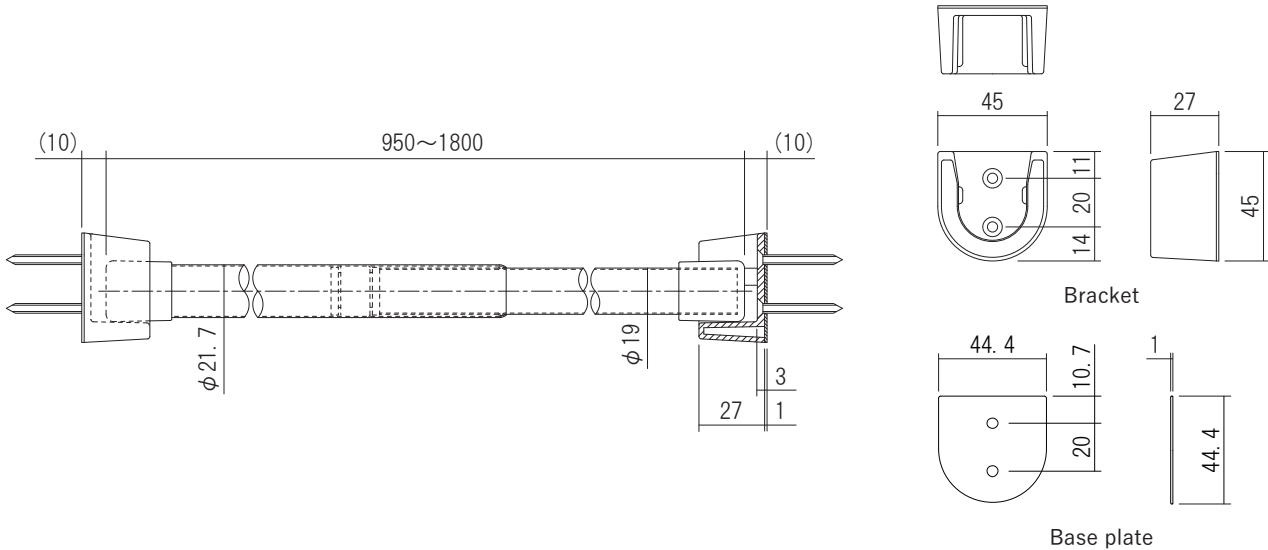
Bracket set

Bracket	2pcs
Base plate	2sheets
Installation screw	4pcs

Warning

Safety Load Capacity:10kg(98N)

Mostly, there is a reinforcing board behind the bathroom wall. However, in some cases, it's not there, and it can cause any damages or dangers caused by the wall that's not strong enough to hold the load. Thus, please make sure of the existence of the board before installing this product.



PP Shelf

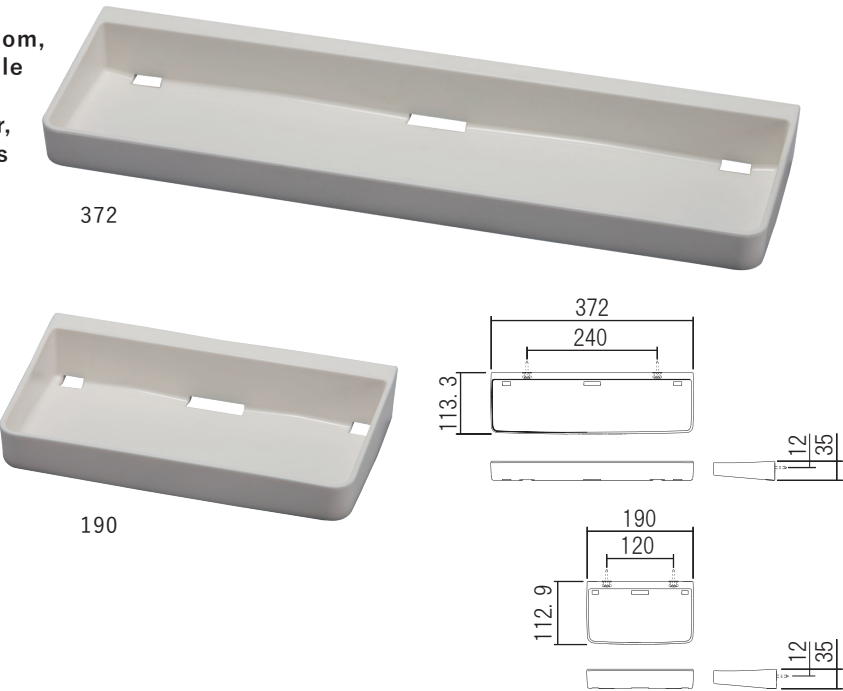


Create additional storage in your bathroom, laundry room, and more with our versatile PP Shelf. Featuring a sleek white finish that effortlessly complements any decor, this shelf is available in 2 different sizes to accommodate your needs.

Material: Resin

PP Shelf		
Product No.	Width(mm)	Finish/Color
610-351	190	White
610-352	372	
Screw included:		
4 × 35 Truss head tapping screw 2pcs		
Installation dowel 2pcs		

PP Shelf Dowel Set (2pcs)	
Product No.	
610-308	
Screw included:	
4 × 35 Truss head tapping screw 2pcs	



Storage Shelf

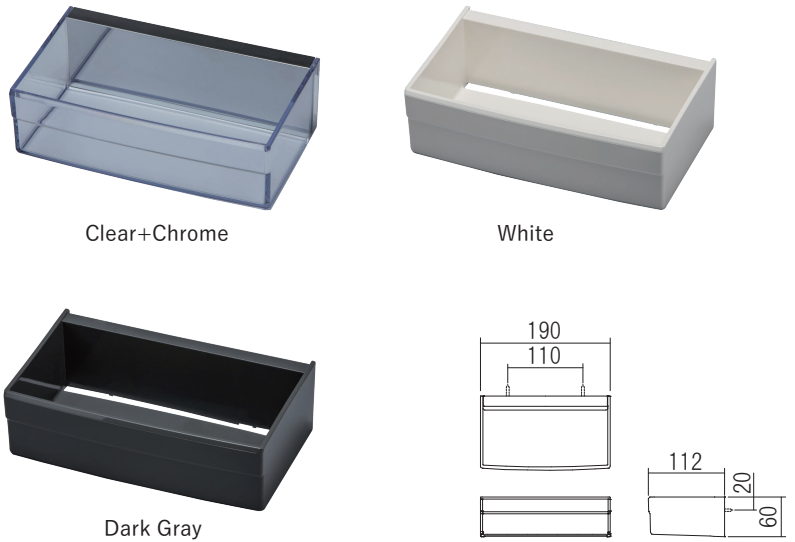


Enhance your bathrooms with our sleek and versatile wall-mounted shelf. It comes in three different finishes to match your bathroom preferences.

Material: Resin

Storage Shelf		
Product No.	Cover	Finish/Color
610-301	Chrome	Clear
610-304	NA	White
610-305	NA	Dark Gray
Screw included:		
4 × 25 Truss head tapping screw 2pcs		
Installation dowel 2pcs		

Storage Shelf Dowel Set (2pcs)	
Product No.	
610-359	
Screw included:	
4 × 25 Truss head tapping screw 2pcs	



Tray Hook



Complete your storage solution with this hook designed to accompany the Storage Shelf. Perfect for hanging items like shavers, this hook add convenience to your storage setting.

Material: Resin

Tray Hook	
Product No.	Finish/Color
610-001	Clear



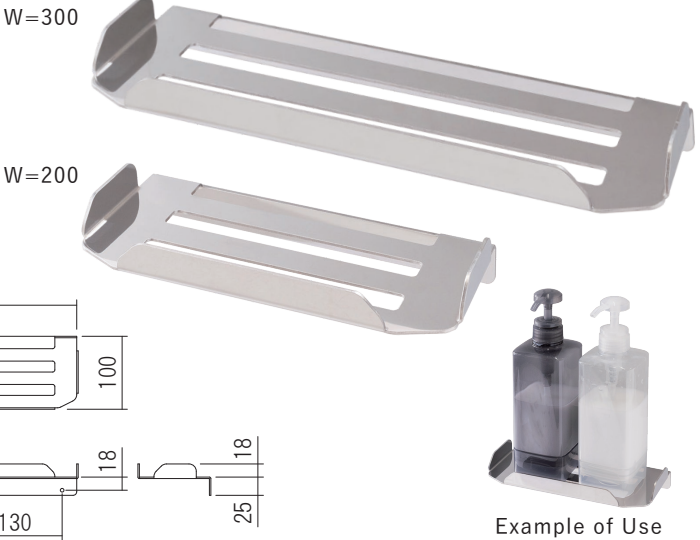
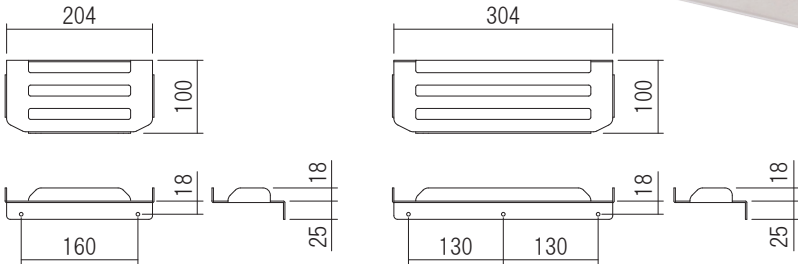
SUS Shelf



Stainless steel shelves crafted for optimal functionality in bathrooms and washrooms. The innovative design prevents water accumulation, ensuring a clean and hygienic environment. It's available in two widths, 200mm and 300mm; both featuring a seamlessly blending mirror finish to create a modern and sleek space.

Material: Stainless

SUS Shelf		
Product No.	Width(mm)	Finish/Color
610-355	200	Mirror Finish
610-356	300	
Screw included:		
W=200: 4 × 25 Truss head tapping screw 2pcs		
W=300: 4 × 25 Truss head tapping screw 3pcs		



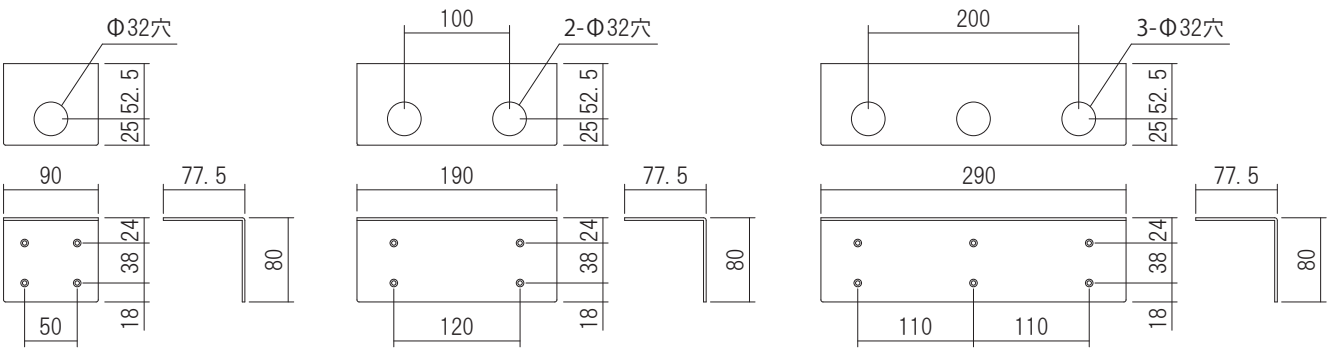
Bottle Rack



Bottle Rack collection, specially designed for bathroom convenience. With three types of variation, in two classic colors, white and black, you have the flexibility to accommodate your specific needs and enhance the overall aesthetics of your bathroom. With easy wall installation, they help keep your bathroom tidy and make cleaning a breeze.

Material: Steel

Bottle Rack		
Product No.	Specification	Finish/Color
620051W	Single	White
620051BK		Black
620052W	Double	White
620052BK		Black
620053W	Triple	White
620052BK		Black
Screw included:		
Single : 4 × 30 Flat head tapping screw 4pcs		
Double: 4 × 30 Flat head tapping screw 4pcs		
Triple : 4 × 30 Flat head tapping screw 6pcs		



Shower Door Handle



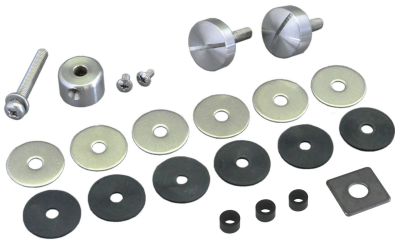
This shower glass door handle is often used in luxury hotels. It's available in I type and L type. The I-type can be installed for both hinged and sliding doors. While the L type also allows you to hang the bath towel on the outer side of the door.

Material:Stainless
Door Thickness:6~12mm

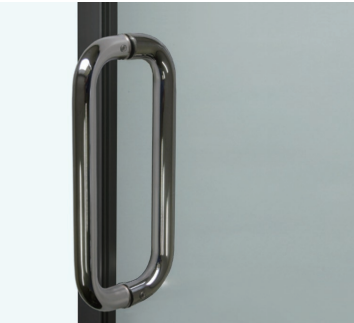
Shower Door Handle

Product No.	Specification	Finish/Color
610-901	L Type	Hairline
610-902	I Type	
610-901B	L Type	Black Painting
610-902B	I Type	
610901M	L Type	Mirror Surface
610902M	I Type	

Screw included:
M6×40 Pan head machine screw
1pcs<L Type>, 2pcs<I Type>
M4×8 Round flat head machine screw
2pcs<L Type>, 4pcs<I Type>
Flat washer 6pcs<L Type>, 4pcs<I Type>
Spring lock washer 1pcs<L Type>
Packing 6pcs<L Type>, 4pcs<I Type>
Water resistant poly tube
3pcs<L Type>, 2pcs<I Type>



Set up hardware set.



I Type (Mirror Surface)

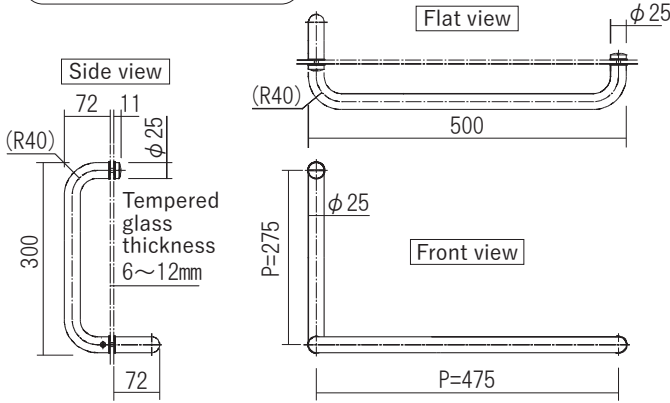


L Type (Hairline)

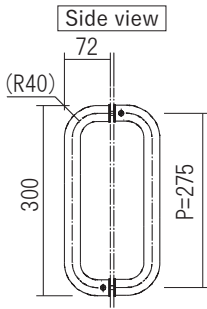


L Type (Black Painting)

Processing hole: $\phi 12 \sim 15$



L Type



I Type

Wall Hook

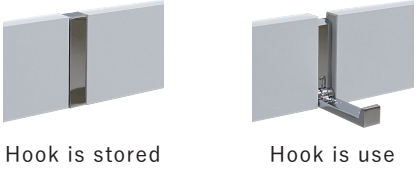
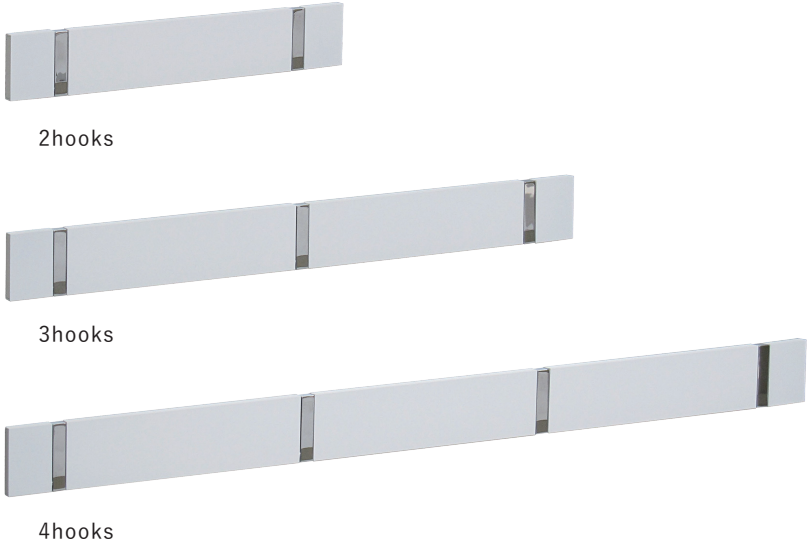


You can hang a variety of items such as coats, jackets, scarves and keys. The hooks can be neatly stored away when not in use. There are three types to suit different purposes and interiors.

Material:
<Base>Aluminum
<Hook>ZDC
<Cover>Aluminum, Resin
Finish/Color:
<Base>Alumite Silver
<Hook>Chrome plating
<Cover>White
Load Capacity:5kg (49N) per hook

Product No.	Specification
441001	2hooks
441002	3hooks
441003	4hooks

Screw included:
<2hooks>
4×40 Flat head tapping screw 4pcs
<3hooks>
4×40 Flat head tapping screw 6pcs
<4hooks>
4×40 Flat head tapping screw 8pcs



Hook is stored

Hook is use

