

Door Parts

Hinged Door Soft Closer



This door closer is suitable for indoor use, either on a new or an existing door. It helps to reduce the unpleasant noise of the door hitting the frame and prevent it from slamming shut. The door closer will decelerate the speed of the door at ± 40 mm towards the end and automatically pull the door to close perfectly. The installation can be done easily using the attached pattern paper. Once installed, the closing speed can be adjusted. Compared to the other products, ours has outstanding durability as it has passed 500,000 times during the performance test.

Adjustable range: Up- down ± 5 mm, right- left ± 5 mm,
front- back ± 4 mm

Material:〈Main unit/ Spool bracket〉Resin, Steel
 〈Liner〉Steel

Hinged Door Soft Closer

Product No.

LH	RH	Door Weight	Finish/Color
312-021	312-025	10~30kg	Gold Painting
312-022	312-026	(98~294N)	Silver Painting
312-023	312-027	※1	Gray
312-024	312-028		Brown
312-051	312-055	45kg	Gold Painting
312-052	312-056	(441N)	Silver Painting
312-053	312-057	※2	Gray
312-054	312-058		Brown

Screw included:

〈Bracket〉

4 × 30 Binding head tapping screw 2pcs

〈Main unit〉

4 x 30 Pan head tapping screw 2pcs

4 × 20 Flat head tapping screw 3pcs

M4×12 Pan head machine screw 2pcs
M4 Flat washer 2pcs

※1 Recommended door weight:10~25kg

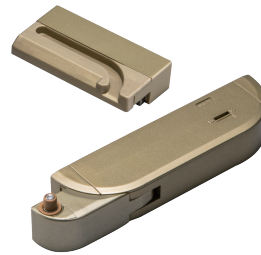
※2 Recommended door weight: 26~40kg



There are LH and RH.



Brown (R)



Gold Painting (R)



Silver Painting (R)



Door Installation Liner

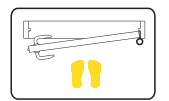
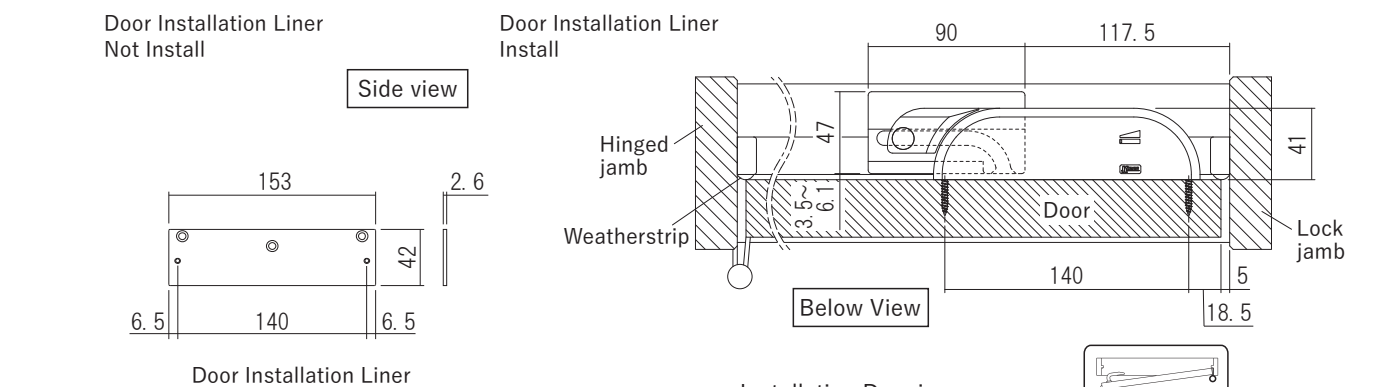
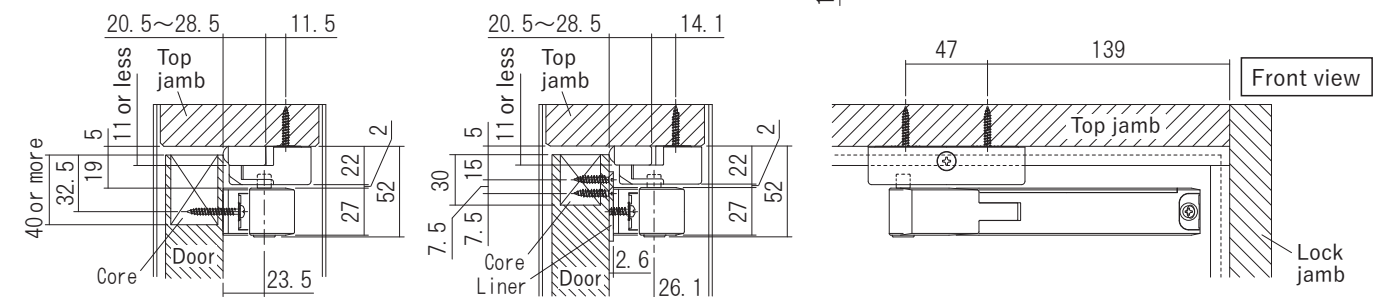
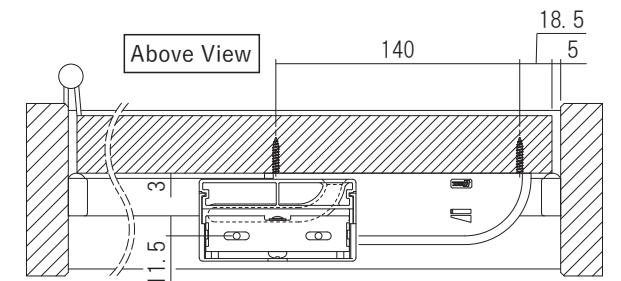
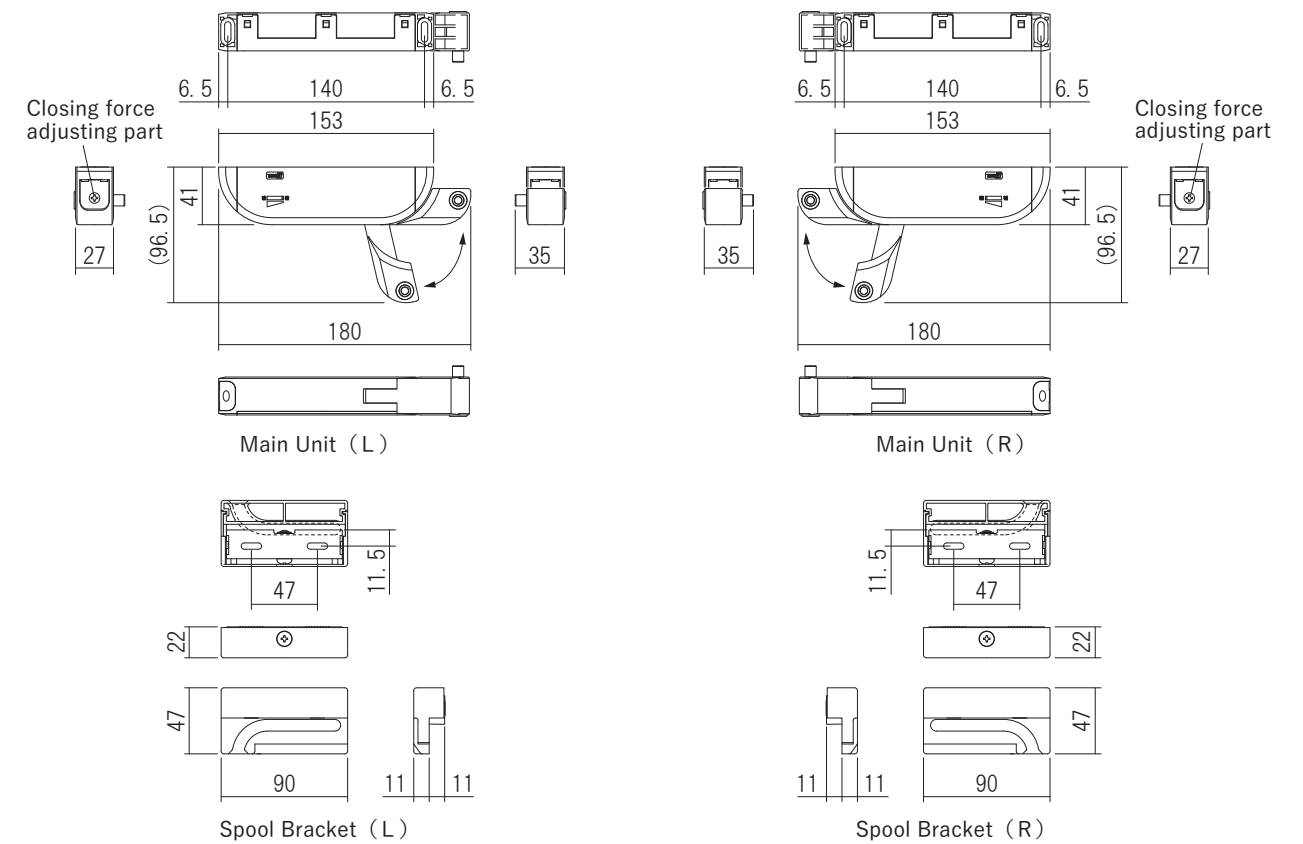


Right Hand

The arm extends once it is released from the spool bracket.



Right Hand



Right Hand

※ This drawing is only for reference.
For installation, please use the manual and pattern paper attached to the product.

Concealed Hinged Door Closer

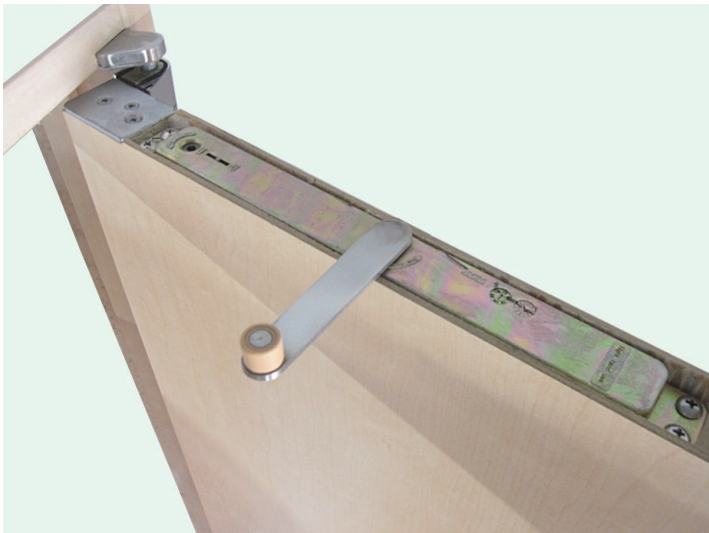
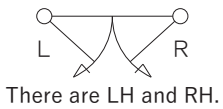
Patent

30kg
OK

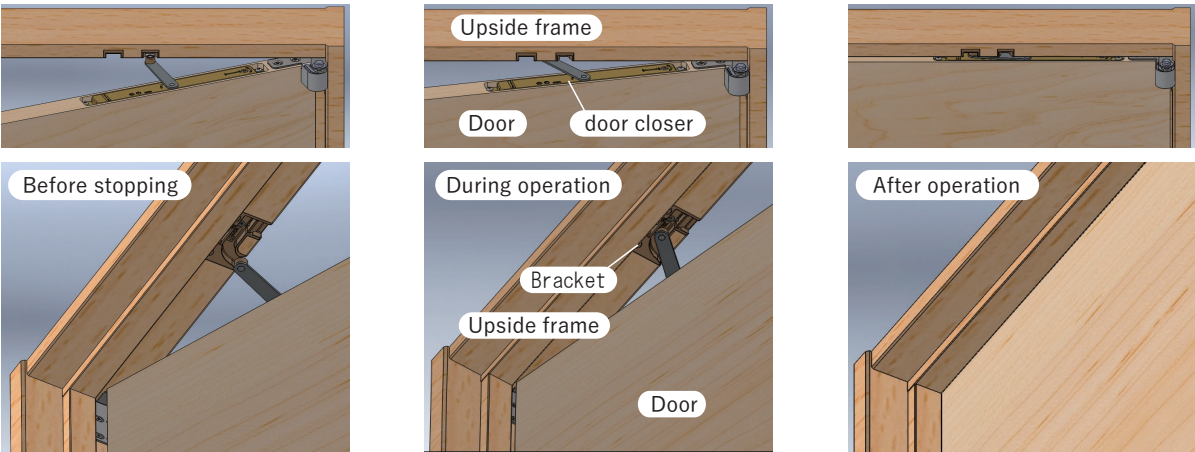
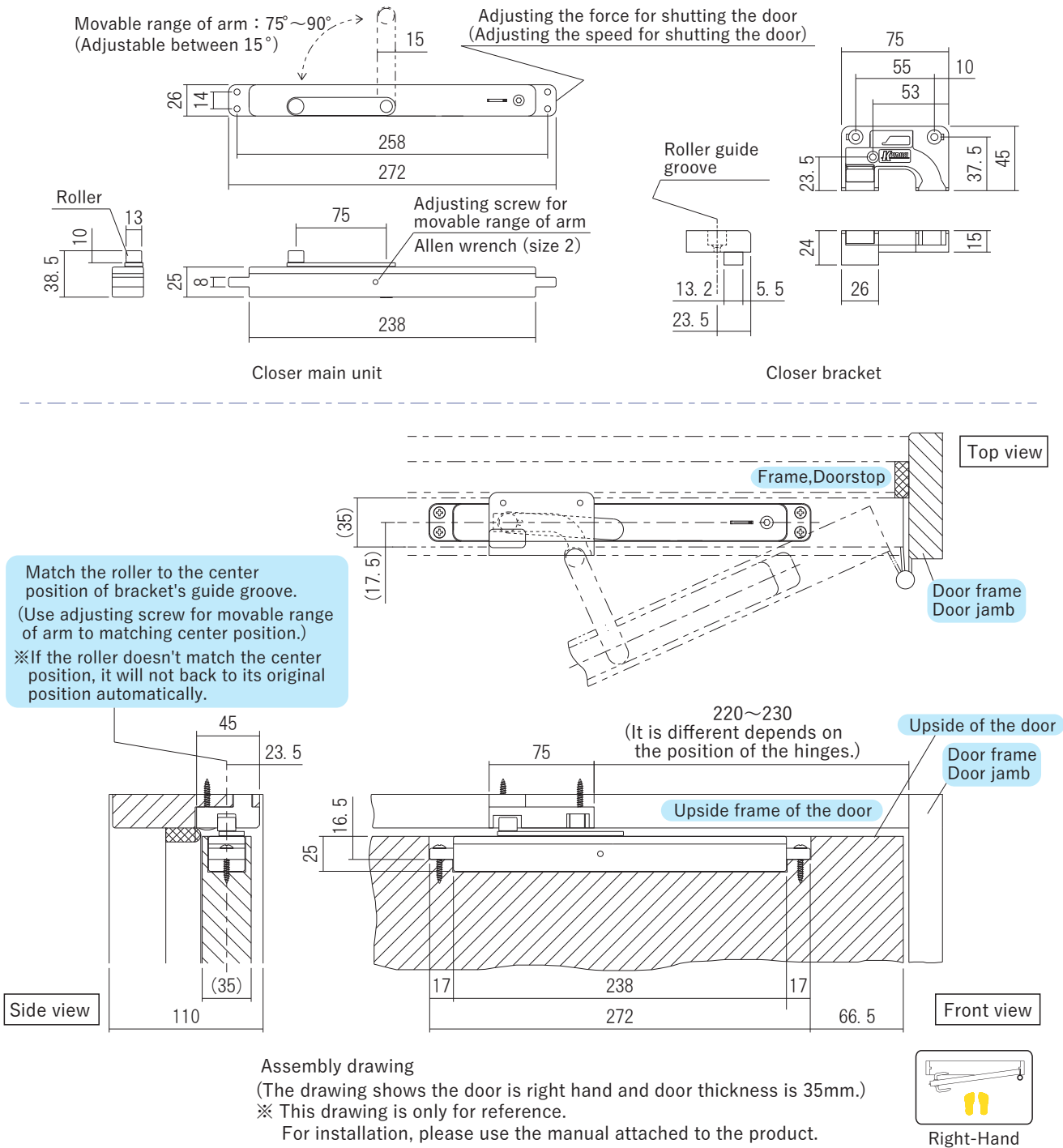
A concealed hinged door closer for indoor use provides the functionality of an overhead door closer but is fitted within the door leaf and frame. This product helps decelerate the speed of the door at ± 100 mm towards the end and self-closing itself slowly to reduce the unpleasant noise of the door hitting the frame and prevent pinched finger accidents. In addition, this type of installation is aesthetically pleasing and helps reduce vandalism, as most of the door closer is hidden from sight. Once installed, the closing speed can also be adjusted.

Material: (Main unit) ZDC
(Spool bracket) Resin
Load capacity: 30kg(297N)
※Please contact us for 70kg(686N) pecifications.

Concealed Hinged Door Closer		
Product No.		
LH	RH	Finish/Color
312-072L	312-072R	Brown
Screw included:		
(Spool bracket)		
4 × 30 Truss head tapping screw 2pcs		
4 × 20 Flat head tapping screw(D7) 1pcs		
(Main unit)		
4 × 30 Truss head tapping screw 4pcs		
Attachment: Allen wrench		



The arm extends once it is released from the spool bracket.



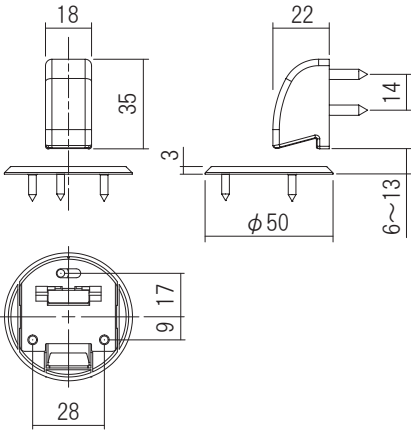
Smart Door Stopper (Magnet Type)

Using a magnet with a strong force, this door stopper can hold a door open and helps eliminate any damage to the adjoining wall. The installation is effortless and can be fixed either on a new or existing door. The mounting screws are invisible, and the height of the floor-mounted part is only 3 mm making this product barrier-free. This door stopper also passed the 100,000 times performance test. Moreover, this product won the Good Design Award for its seamless and smart design while maintaining maximum functionality.

Material: <Main unit>Magnet, Resin
<Base>Resin, Stainless
Load Capacity:30kg(294N)

Smart Door Stopper (Magnet Type)	
Product No.	Finish/Color
220-251	White
220-252	Silver
220-253	Gold
220-254	Silver Painting
220-255	Gold Painting
220-256	Chrome Plating

Screw included:
<Main unit>
4 × 20 Pan head tapping screw 2pcs
<Base>
3 × 12 Flat head tapping screw 3pcs



White



Silver



Gold



Silver Painting



Gold Painting



Chrome Plating



Doors Keeper (Magnet Type)

This door keeper uses a strong magnetic force that works well on a heavy door to stop it. Pushing the door once it is stopped will turn it into a lock position, and there will be no chance of it slipping and swinging through when opened. However, it will need a little to no effort to pull and close the door. The installation is effortless and can be fixed either on a new or existing door. In addition, the floor-mounted part is only 3 mm making this product barrier-free. This durable doorkeeper has also passed the 100,000 times performance test and won the Good Design award for its smart design while maintaining maximum functionality.

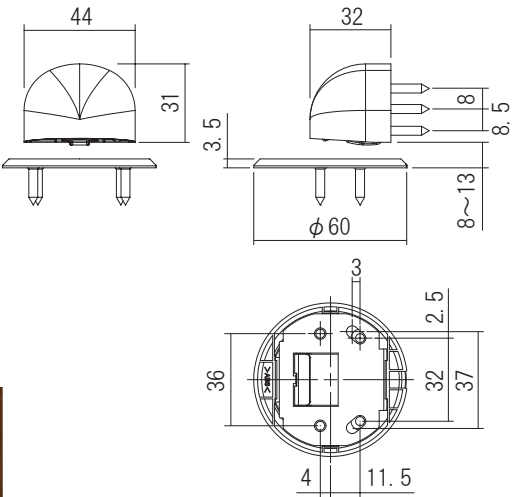
Material: <Main unit>Magnet, Resin
<Base>Resin, Stainless
Load Capacity:100kg(980N)

Doors Keeper (Magnet Type)	
Product No.	Finish/Color
220-261	White
220-262	Silver
220-263	Gold
220-264	Silver painting
220-265	Gold painting
220-266	Chrome plating

Screw included:
<Main unit> 4 × 20 Pan head tapping screw 4pcs
<Base> 3 × 12 Flat head tapping screw 4pcs

Door Keeper Concealed Type	
Product No.	Finish/Color
220-271	White
220-272	Silver
220-273	Gold
220-274	Silver Painting
220-275	Gold Painting
220-276	Chrome Plating

Screw included:
<Main unit> 4.2 × 32 Pan head tapping screw 4pcs
<Base> 3 × 12 Flat head tapping screw 4pcs



White



Silver



Gold



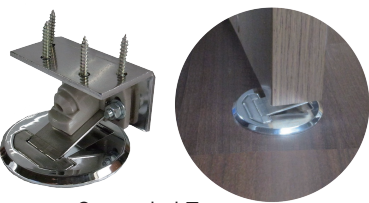
Silver Painting



Gold Painting



Chrome Plating



Concealed Type

Pivot Hinge

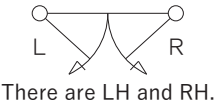
Patent

30kg OK

33-36mm

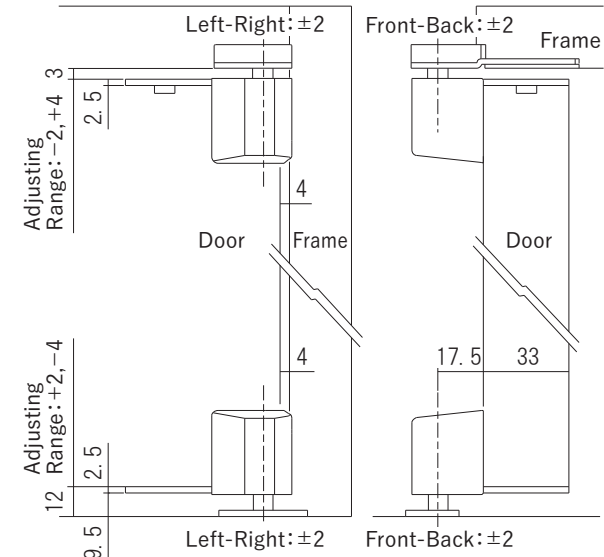
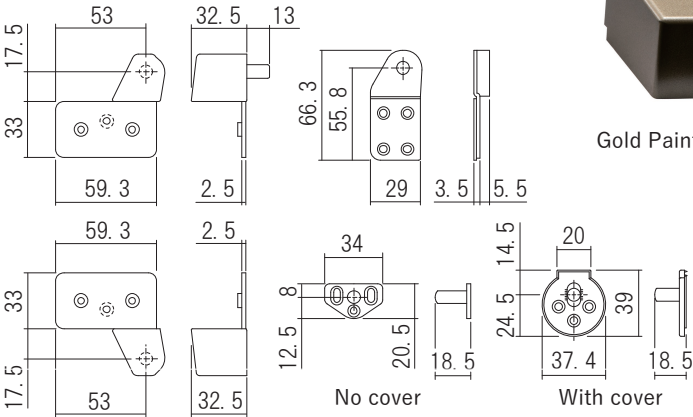
This hinge is fixed in the top and bottom of the door. The design is slim, so it doesn't interfere with the design of the door. Once the bottom part is fixed, the upper part is easily set by pulling down the upper pin and put it back in place. Once installed, the front-back, right-left, up-down adjustment can be made easily using a screwdriver. This type of hinge is very durable as it has passed 200,000 operation tests, and it is also available in four high-quality finishing colors.

Material: (Main unit)Steel, ZDC (Cover)Resin
Load Capacity:30kg(294N)
Recommended Door Thickness:33mm
Adjusting Range:Front-Back±2, Left-Right±2
Up-Down+2mm, -4mm

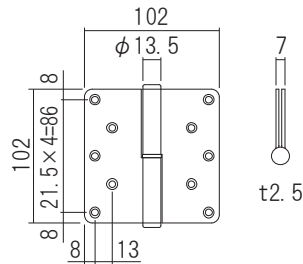
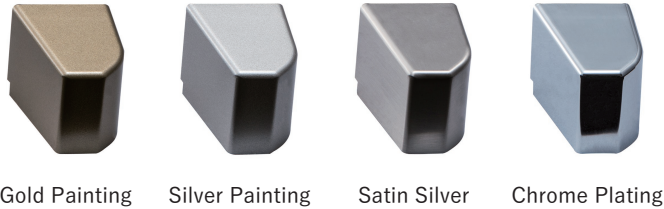
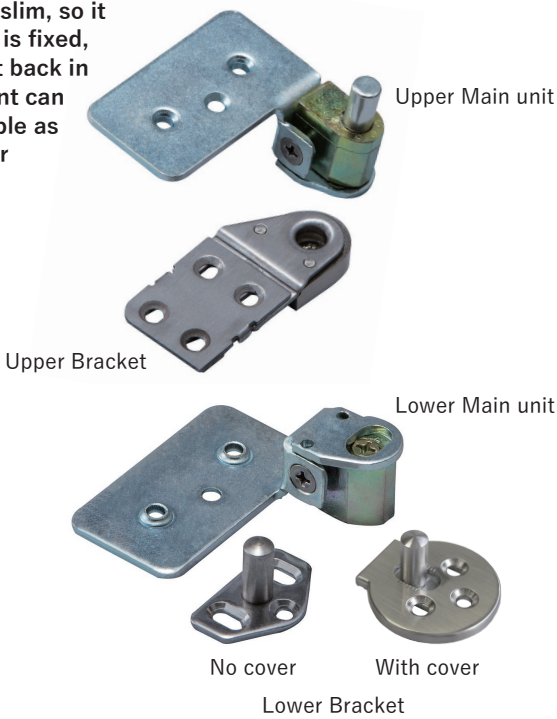


There are LH and RH.

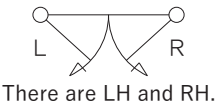
Pivot Hinge			
Product No.			
LH	RH	Lower Bracket	Finish/Color
215-011	215-015	No cover	Gold Painting
215-012	215-016		Silver Painting
215-013	215-017		Satin Silver
215-014	215-018		Chrome Plating
215-011N	215-015N	With cover	Gold Painting
215-012N	215-016N		Silver Painting
215-013N	215-017N		Satin Silver
215-014N	215-018N		Chrome Plating
Screw included:			
〈Upper Bracket〉 3.5×25 Flat head tapping screw 4pcs			
〈Lower Bracket〉 3.5×25 Flat head wood screw 3pcs			
〈Main unit〉 3.5×30 Flat head tapping screw 6pcs			



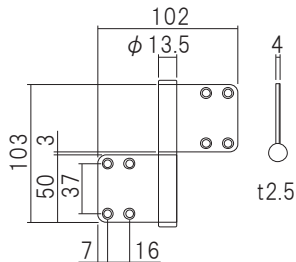
Drawing for Installation (Drawing for Right-Hand)
※ Digging is necessary on door and frame.



※ This drawing is Right-Hand



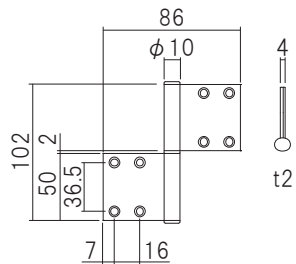
There are LH and RH.



※ This drawing is Right-Hand



There are LH and RH.



※ This drawing is Right-Hand



There are LH and RH.



Silver Painting (R)



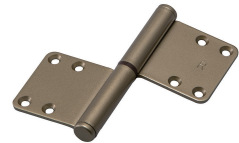
Amber Painting (R)



Gold Painting (L)



Amber Painting (R)



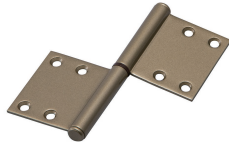
Gold Painting (R)



Raw Material (R)



Amber Painting (R)



Gold Painting (R)

Butt Hinge

294N OK

This standard type hinge consists of knuckles and leaves. The leaves use high-strength steel, and the hinge itself has passed 200,000 operation tests. Thus, this hinge has excellent strength and durability. In addition, the installation can be done easily as the leaves can be removed and then attached to the door and frame separately. The knuckles are also easy to insert and remove to ease the fixing process.

Material:Steel
Load Capacity:30kg(294N)_When using 2pcs

Butt Hinge		
Product No.		
Left-Hand	Right-Hand	Finish/Color
201-021	201-011	Silver Painting
201-022	201-012	Amber Painting
201-023	201-013	Gold Painting

Screw included: 4×25 Flat head tapping screw 10pcs

Lift Off Hinge

294N OK

This flag hinge uses high-strength steel for the leaves part, and the hinge itself has passed 200,000 operation tests. Thus, this hinge has excellent strength and durability. In addition, the installation can be done easily as the leaves can be removed and then attached to the door and frame separately. The knuckles are also easy to insert and remove to ease the fixing process.

Material:Steel
Load Capacity:30kg(294N)_When using 2pcs

Lift Off Hinge		
Product No.		
Left-Hand	Right-Hand	Finish/Color
201-222	201-212	Amber Painting
201-223	201-213	Gold Painting

Screw included: 4×25 Flat head tapping screw 8pcs

Stainless Lift Off Hinge

294N OK

The leaves of this flag hinge uses SUS 304 with excellent resistance to corrosion and rust. Also, the hinge itself has passed 200,000 operation tests. Thus, this hinge has excellent durability. The installation can be done easily as the leaves can be removed and then attached to the door and frame separately. The knuckles are also easy to insert and remove to ease the fixing process.

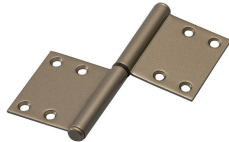
Material:Stainless
Load Capacity:30kg(294N)_When using 2pcs

Stainless Lift Off Hinge		
Product No.		
Left-Hand	Right-Hand	Finish/Color
201-521	201-511	Raw Material
201-522	201-512	Amber Painting
201-523	201-513	Gold Painting

Screw included: 4×25 Flat head tapping screw 8pcs



Amber Painting (R)



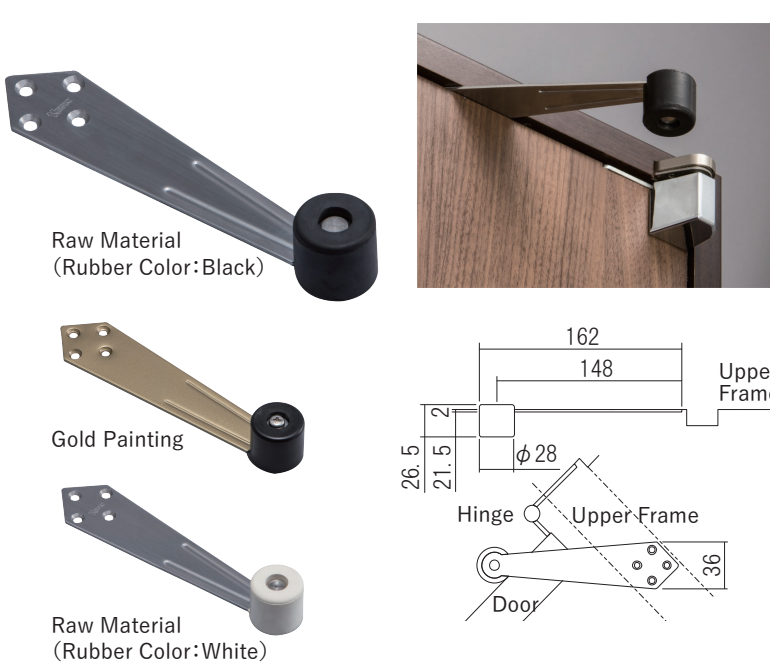
Gold Painting (R)

Reversible Door Stopper

This reversible door stop is applicable on a right or left-hand door. By using this, it allows the door to be opened up to 90°. Furthermore, since this device is mounted on the top of the door instead of the floor, this door stopper is safe as it eliminates tripping hazards. This product has also passed 200,000 operation tests which ensure its durability in the long term.

Material: (Bracket)Stainless
(Door Stop part)Rubber
Load Capacity:30kg(294N)
Left or Right-Hand:Common use

Reversible Door Stopper		
Product No.	Finish/Color	Rubber Color
220-212	Raw Material	Black
220-214	Gold Painting	
220-216	Raw Material	White
220-218	Gold Painting	
Screw included:		
3.5×35 Flat head tapping screw 4pcs		

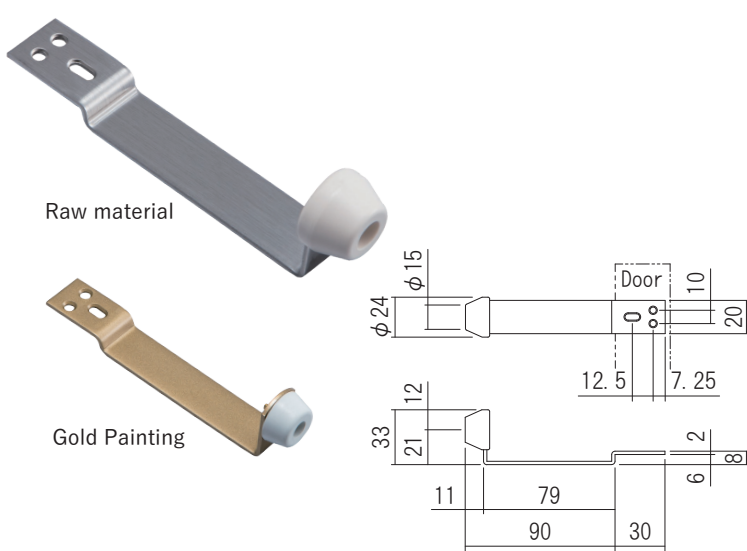


Public Housing Door Stopper

This type of door stopper is applicable on a right or left-hand door. This device helps the door stop once the rubber part hits the wall without damaging it. In addition, since this door stopper is mounted on the top of the door instead of the floor, this device is safe to use as it eliminates tripping hazards.

Material: (Bracket)Stainless
(Door Stop part)Rubber
Load Capacity:30kg(294N)
Left or Right-Hand:Common use

Public Housing Door Stopper		
Product No.	Finish/Color	Rubber Color
220-221	Raw material	White
220-223	Gold Painting	
Screw included:		
3×16 Flat head wood screw 3pcs		

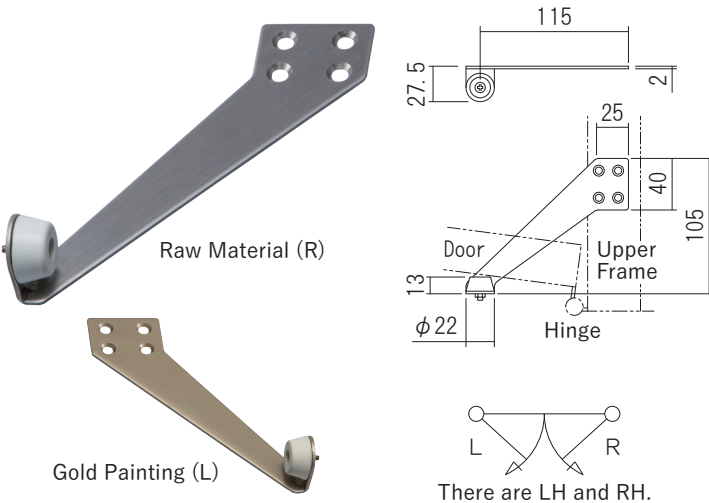


Upper Frame Door Stopper

As its name, this door stopper is fixed on the upper frame of the door. It allows the door to be opened up to 90°. Furthermore, since this device is mounted on the top of the door instead of the floor, this door stopper is safe as it eliminates tripping hazards.

Material: (Bracket)Stainless
(Door Stop part)Rubber
Load Capacity:30kg(294N)

Upper Frame Door Stopper			
Product No.		Finish/Color	Rubber Color
220-241	220-231	Raw Material	White
220-243	220-233	Gold Painting	
Screw included: 4×25 Flat head tapping screw 4pcs			

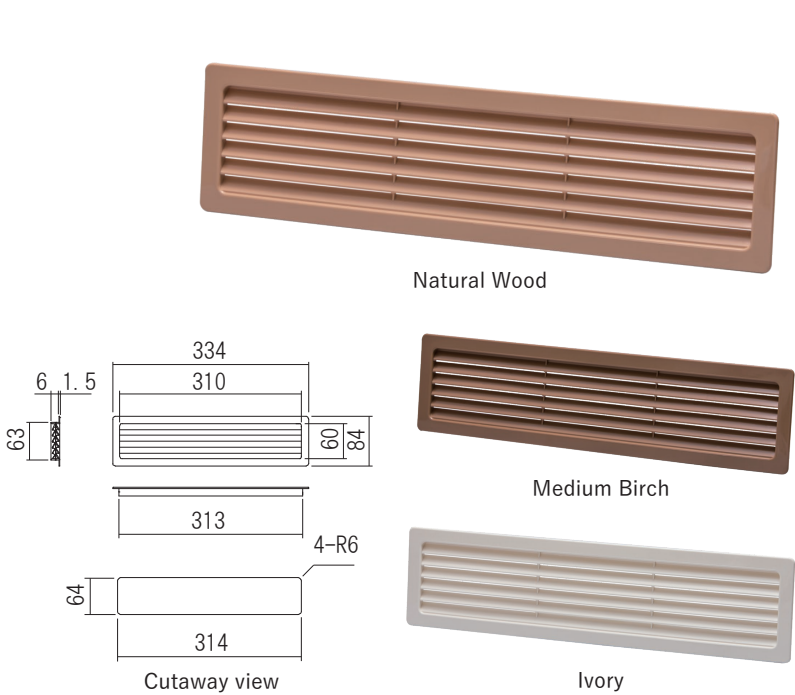


Door Louver

This door louver is mainly used in nursing homes. It has 39% aperture ratio, which is suitable for the door to provide cross-flow and help maintain a healthy environment. It is available in three different colors to match the color of the doors used in most hospitals or other facilities.

Material:Resin

Door Louver		
Product No.	Specification	Finish/Color
630-051	For one side	Natural Wood
630-031		Medium Birch
630-011		Ivory
630-061	For both sides	Natural Wood
630-041		Medium Birch
630-021		Ivory
Reversible door thickness:28~33mm		
※ Please contact us, if you want other colors.		



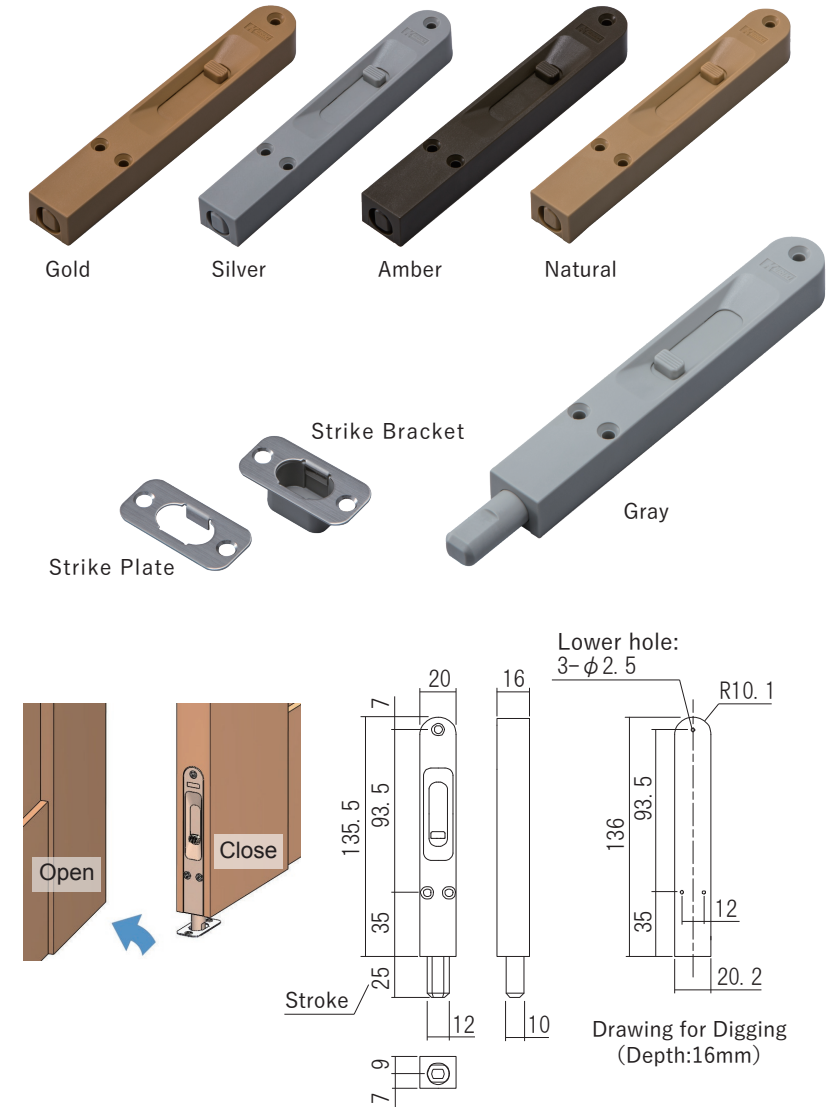
Flush Bolt

Using a rod flatten in some parts, this flush bolt will secure the inactive leaf of a pair of doors. The special feature also prevents the inactive door from shaking and rattling. The product is available in 5 different colors to match any color of doors.

Material: Resin, Stainless

Flush Bolt		
Product No.	Specification	Finish/Color
225-013	Strike Plate set	Gold
225-015		Silver
225-017		Amber
225-019		Natural
225-021		Gray
225-113	Strike Bracket set	Gold
225-115	(Depth 15mm)	Silver
225-117		Amber
225-119		Natural
225-121		Gray
225-213	Strike Bracket set	Gold
225-215	(Depth 20mm)	Silver
225-217		Amber
225-219		Natural
225-221		Gray

Screw included:
(Flush Bolt)
3.5×32 Flat head wood screw 3pcs
(Strike Plate, Strike Bracket)
4×20 Flat head tapping screw(D7) 2pcs



Light Indicator Lens

This device helps users recognizing if the light inside a room is on from outside. The indicator lens can be easily attached to the door by pushing it into the hole (prior drilling needed). The thin ring on both ends is designed with a wider surface to hide the mark of the drilled hole on the door. It is available in three types: round type with $\Phi 35$ and $\Phi 38$, also square type.

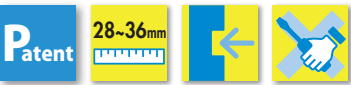
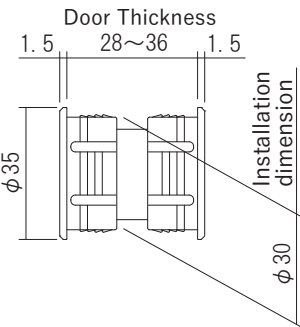


Round Type 35

The design is thin and well-trimmed, so it does not muddle the design of the door. We provide 7 different colors to complement any doors color.

Material: Resin
Door Thickness: 28~36mm

Round Type 35		
Product No.	Finish/Color	
250-311	Birch	K
250-312	Natural	N
250-313	White	W
250-314	Cherry	C
250-315	Brown	B
250-316	Dark	D
250-317	Painting	(HL Color)

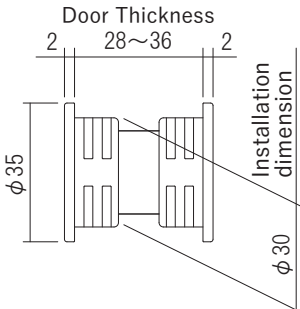


Round Type 35 (O-ring specifications)

It is a $\Phi 35$ O-ring specification.
Uses an O-ring to make it difficult to loosen.

Material: Resin
Door Thickness: 28~36mm

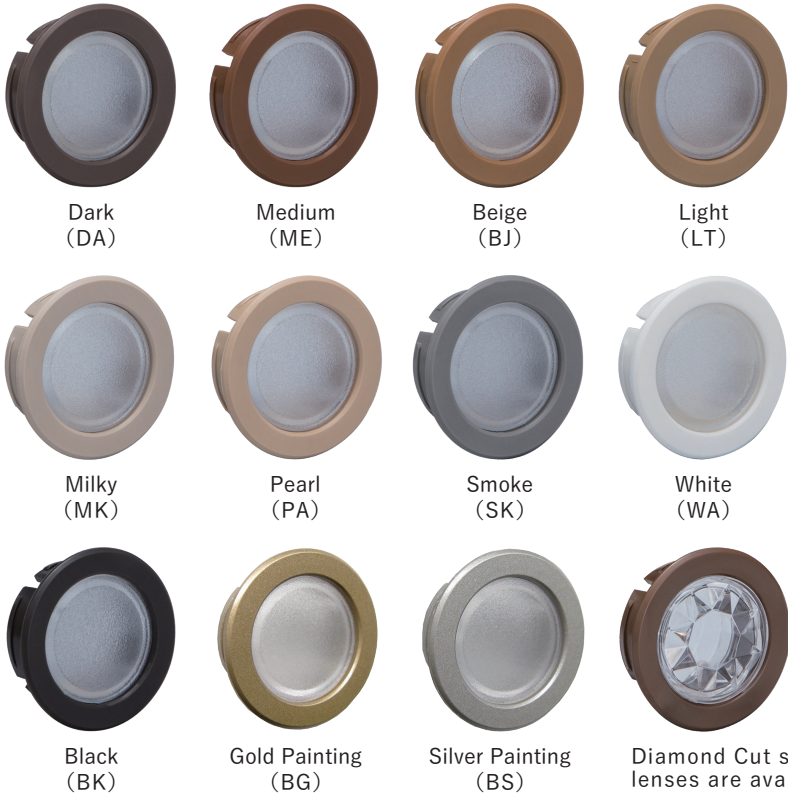
Round Type 35 (O-ring specifications)	
Product No.	Finish/Color
250-318	Clear



Clear



Beige (BJ)

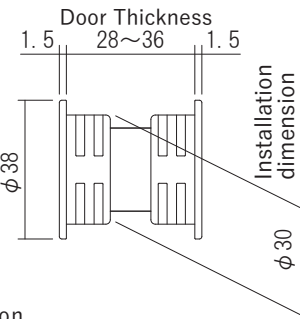


Round Type 38

Not only available in a convex lens, but the standard type also has a lens shaped like a diamond cut to reflect the light better. In addition, this type is available in 11 different colors to complement any doors color.

Material: Resin
Door Thickness: 28~36mm

Round Type 38		
Product No.	Finish/Color	
250-111	Dark	DA
250-112	Medium	ME
250-113	Beige	BJ
250-114	Light	LT
250-115	Milky	MK
250-116	Pearl	PA
250-117	Smoke	SK
250-118	White	WA
250-119	Black	BK
250-120	Gold Painting	BG
250-128	Silver Painting	BS

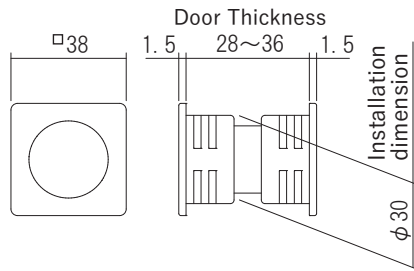


Square Type 38

This product has a sharp design on both edges to enhances the look of the door.
This square type is available in two exclusive finishes to complement any doors color.

Material: Stainless, Resin
Door Thickness: 28~36mm

Square Type 38	
Product No.	Finish/Color
250-211	HL (Hairline)
250-212	Mirror Finish



HL (Hairline)



Mirror Finish