



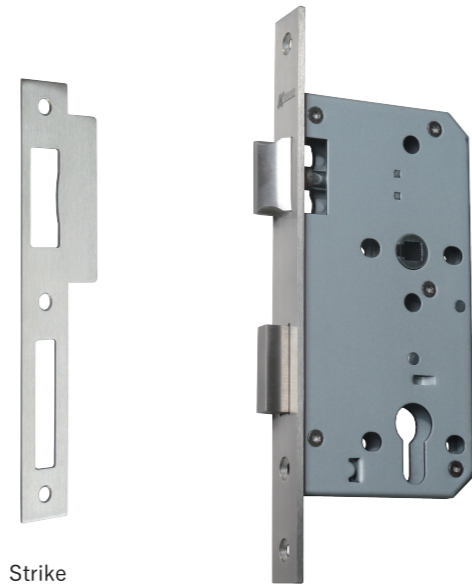
Mortice Locks

This mortice lock conforms to DIN18251 and EN12209:2003/AC2005. It can be used on fire rated door and the fire rated period is effective for more than 2 hours.

Material: (Mortice)Steel, Stainless
 (Strike)Stainless
 (Strike Pocket)Resin
 Backset:60mm
 Durability Testing:500,000 times
 Specification: EN12209, DIN18251

Mortice Lock	
Product No.	Specification
500010	Sash lock
500011	Night latch lock
500012	Deadlock
500013	Passage lock
500014	Privacy lock
500015	Classroom lock
500016	Roller lock

Screw included:
 4.8×25 Flat head tapping screw 2pcs
 4×16 Flat head tapping screw 3pcs
 Parts included:
 Mortice Lock 1pcs
 Assembly screws 1set
 Strike 1pcs
 Strike Pocket 1pcs



Strike

Sash Lock



Night latch lock

Deadlock

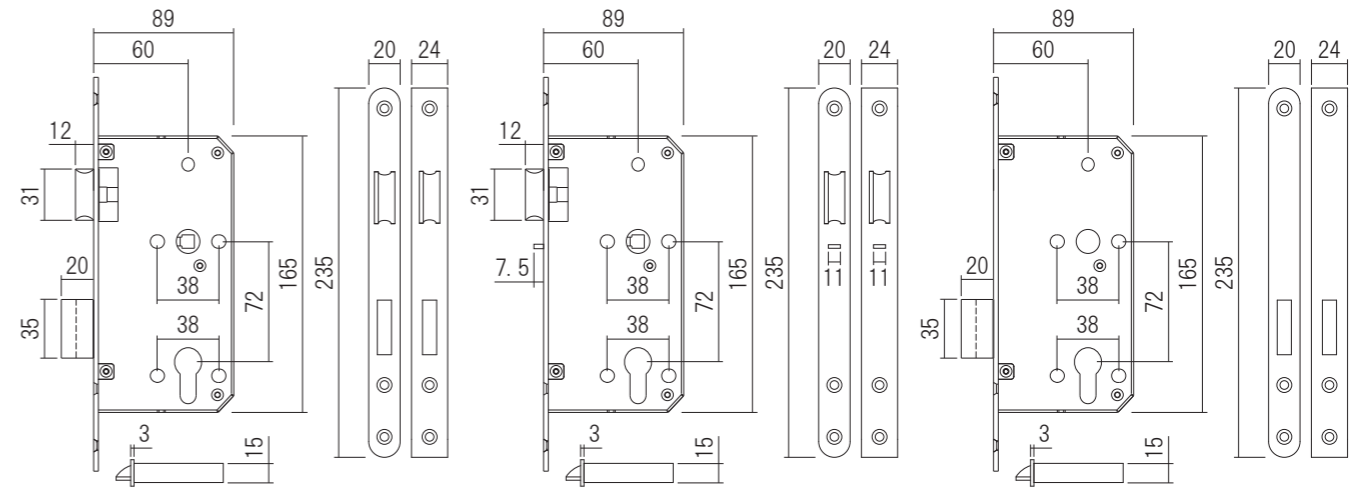
Passage lock

Privacy lock

Classroom lock

Roller lock

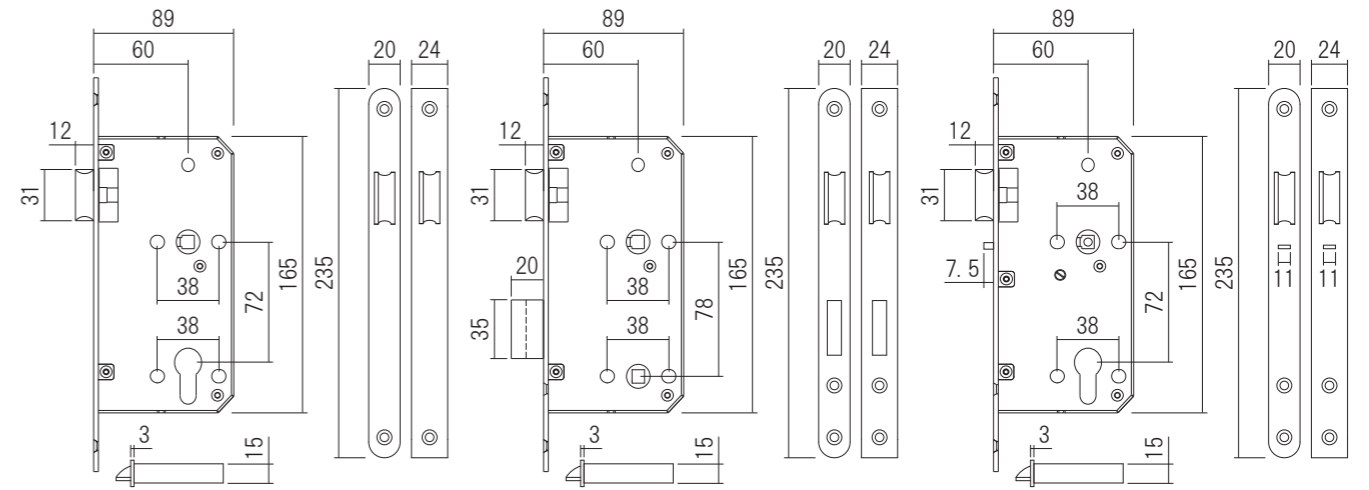
- Sash lock** A locking mechanism with a built in latch bolt operated by lever handle or key and deadbolt operated by key. (A lock with emergency specification allows the latch bolt and deadbolt to be operated by interior lever handle.)
- Night latch lock** A locking mechanism with a built in latch bolt operated from interior lever handle and exterior key or thumb turn. (A lock with anti poke specification is impossible to be opened from the outside once the door's closed.)
- Deadlock** A locking mechanism with a built in deadbolt operated by a key or thumb turn.
- Passage lock** A locking mechanism with a built in latch bolt operated by both interior and exterior lever handle.
- Privacy lock** A locking mechanism with a built in latch bolt operated from both interior and exterior lever handle, and dead bolt operated by thumb turn or certain tools.
- Classroom lock** A locking mechanism with a built in latch bolt operated from interior lever handle and exterior key. The exterior lever handle is ineffective.
- Roller lock** A locking mechanism with a built in roller latch and the deadbolt is operated by the key or thumb turn.



Sash lock

Night latch lock

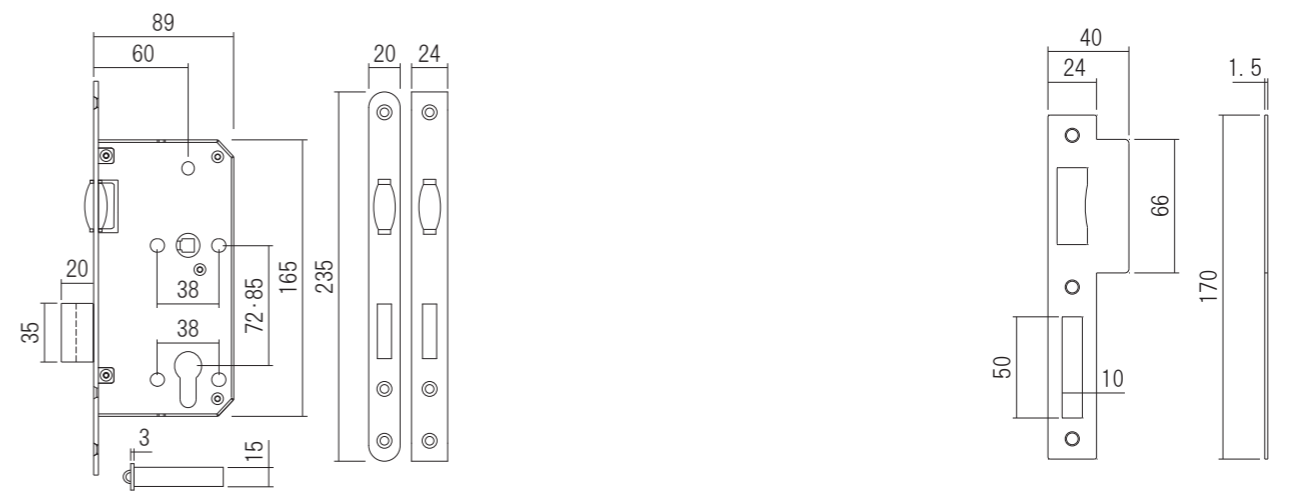
Deadlock



Passage lock

Privacy lock

Classroom lock



Roller lock

Strike